

Anti-CEBP Delta/CEBPD antibody ab65081

★★★★★ [3 Abreviews](#) [14 References](#) [1 图像](#)

概述

产品名称	Anti-CEBP Delta/CEBPD抗体
描述	兔多克隆抗体to CEBP Delta/CEBPD
宿主	Rabbit
经测试应用	适用于: WB
种属反应性	与反应: Mouse, Human
免疫原	Synthetic peptide. This information is proprietary to Abcam and/or its suppliers.
常规说明	<p>The Life Science industry has been in the grips of a reproducibility crisis for a number of years. Abcam is leading the way in addressing this with our range of recombinant monoclonal antibodies and knockout edited cell lines for gold-standard validation. Please check that this product meets your needs before purchasing.</p> <p>If you have any questions, special requirements or concerns, please send us an inquiry and/or contact our Support team ahead of purchase. Recommended alternatives for this product can be found below, along with publications, customer reviews and Q&As</p>

性能

形式	Liquid
存放说明	Shipped at 4°C. Store at +4°C short term (1-2 weeks). Upon delivery aliquot. Store at -20°C. Avoid freeze / thaw cycle.
存储溶液	<p>pH: 7.40</p> <p>Preservative: 0.02% Sodium azide</p> <p>Constituents: PBS, 50% Glycerol (glycerin, glycerine), 0.87% Sodium chloride</p> <p>PBS without Mg2+ and Ca2+</p>
纯度	Immunogen affinity purified
纯化说明	The antibody was affinity-purified from rabbit antiserum by affinity-chromatography using epitope-specific immunogen.
克隆	多克隆
同种型	IgG

应用

The Abpromise guarantee

Abpromise™ 承诺保证使用 ab65081 于以下的经测试应用

“应用说明”部分 下显示的仅为推荐的起始稀释度; 实际最佳的稀释度/浓度应由使用者检定。

应用	Ab 评论	说明
WB	★★★★★ (2)	1/500 - 1/1000. Detects a band of approximately 29 kDa (predicted molecular weight: 29 kDa).

靶标

功能

C/EBP is a DNA-binding protein that recognizes two different motifs: the CCAAT homology common to many promoters and the enhanced core homology common to many enhancers. Important transcriptional activator in the regulation of genes involved in immune and inflammatory responses, may play an important role in the regulation of the several genes associated with activation and/or differentiation of macrophages.

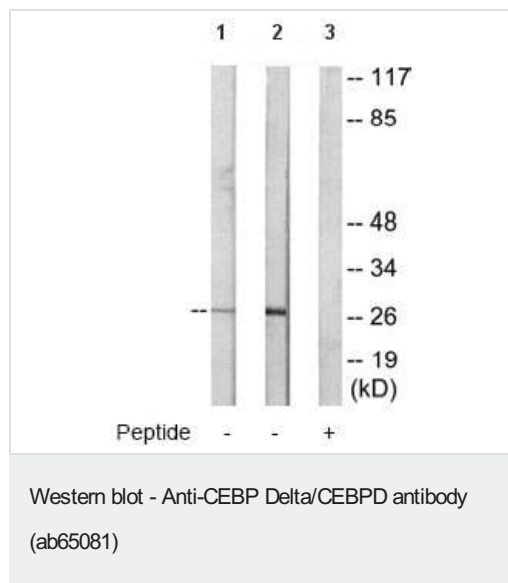
序列相似性

Belongs to the bZIP family. C/EBP subfamily.
Contains 1 bZIP domain.

细胞定位

Nucleus.

图片



All lanes : Anti-CEBP Delta/CEBPD antibody (ab65081) at 1/500 dilution

Lane 1 : Extracts from LOVO cells

Lane 2 : Extracts from RAW264.7 cells

Lane 3 : Extracts from RAW264.7 cells with immunising peptide at 10 µg

Lysates/proteins at 30 µg per lane.

Predicted band size: 29 kDa

Observed band size: 29 kDa

Please note: All products are "FOR RESEARCH USE ONLY. NOT FOR USE IN DIAGNOSTIC PROCEDURES"

Our Abpromise to you: Quality guaranteed and expert technical support

- Replacement or refund for products not performing as stated on the datasheet
- Valid for 12 months from date of delivery
- Response to your inquiry within 24 hours

- We provide support in Chinese, English, French, German, Japanese and Spanish
- Extensive multi-media technical resources to help you
- We investigate all quality concerns to ensure our products perform to the highest standards

If the product does not perform as described on this datasheet, we will offer a refund or replacement. For full details of the Abpromise, please visit <https://www.abcam.cn/abpromise> or contact our technical team.

Terms and conditions

- Guarantee only valid for products bought direct from Abcam or one of our authorized distributors