

Anti-CEBP Alpha/CEBPA antibody [EP708Y] ab40761

 **RabMAb**

★★★★★ **2 Abreviews** **18 References** **5 图像**

概述

产品名称	Anti-CEBP Alpha/CEBPA抗体[EP708Y]
描述	兔单克隆抗体[EP708Y] to CEBP Alpha/CEBPA
宿主	Rabbit
特异性	This antibody recognizes isoform1 and isoform 4.
经测试应用	适用于: Flow Cyt (Intra), WB, ICC/IF 不适用于: IHC or IP
种属反应性	与反应: Human
免疫原	Synthetic peptide within Human CEBP Alpha/CEBPA aa 1-100 (N terminal). The exact sequence is proprietary.
阳性对照	U937+LPS cell lysate, HeLa cells.
常规说明	<p>This product is a recombinant monoclonal antibody, which offers several advantages including:</p> <ul style="list-style-type: none"> - High batch-to-batch consistency and reproducibility - Improved sensitivity and specificity - Long-term security of supply - Animal-free production <p>For more information see here.</p> <p>Our RabMAb[®] technology is a patented hybridoma-based technology for making rabbit monoclonal antibodies. For details on our patents, please refer to RabMAb[®] patents.</p> <p>Mouse, Rat: We have preliminary internal testing data to indicate this antibody may not react with these species. Please contact us for more information.</p>

性能

形式	Liquid
存放说明	Shipped at 4°C. Upon delivery aliquot and store at -20°C. Avoid freeze / thaw cycles.
存储溶液	<p>pH: 7.20</p> <p>Preservative: 0.05% Sodium azide</p> <p>Constituents: 0.1% BSA, 40% Glycerol (glycerin, glycerine), 9.85% Tris glycine, 50% Tissue culture supernatant</p>

纯度	Protein A purified
克隆	单克隆
克隆编号	EP708Y
同种型	IgG

应用

The Abpromise guarantee **Abpromise™承诺保证使用ab40761于以下的经测试应用**

“应用说明”部分下显示的仅为推荐的起始稀释度;实际最佳的稀释度/浓度应由使用者检定。

应用	Ab评论	说明
Flow Cyt (Intra)		1/100. ab172730 - Rabbit monoclonal IgG, is suitable for use as an isotype control with this antibody.
WB	★★★★☆ (2)	1/1000 - 1/10000. Detects a band of approximately 30,43 kDa (predicted molecular weight: 43 kDa).
ICC/IF		1/250 - 1/500.

应用说明 Is unsuitable for IHC or IP.

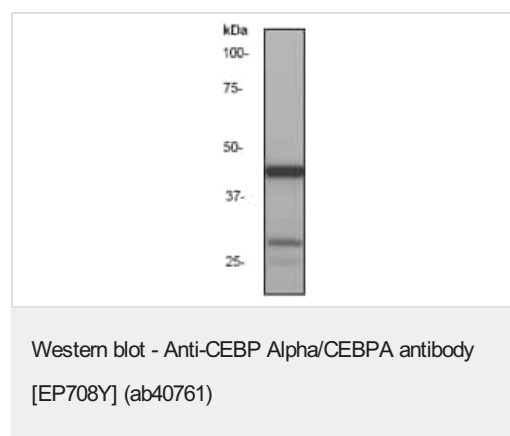
靶标

功能 C/EBP is a DNA-binding protein that recognizes two different motifs: the CCAAT homology common to many promoters and the enhanced core homology common to many enhancers.

序列相似性	Belongs to the bZIP family. C/EBP subfamily. Contains 1 bZIP domain.
-------	---

细胞定位 Nucleus.

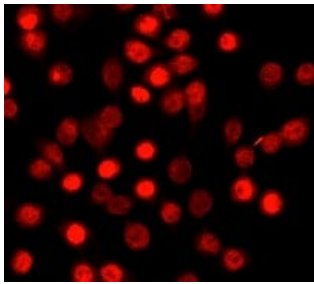
图片



Anti-CEBP Alpha/CEBPA antibody [EP708Y] (ab40761) at 1/1000
dilution + U937 + LPS cell lysate at 10 µg

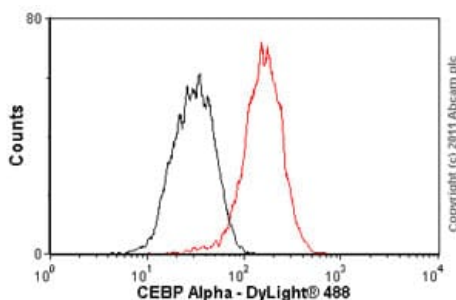
Predicted band size: 43 kDa
Observed band size: 30.43 kDa

We are unsure as to the identity of the 30kda band.



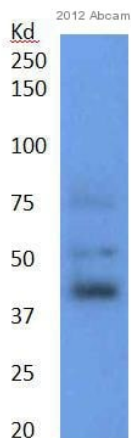
Immunocytochemistry/ Immunofluorescence - Anti-CEBP Alpha/CEBPA antibody [EP708Y] (ab40761)

ab40761 (1/250) staining HeLa cells using immunofluorescence.



Flow Cytometry (Intracellular) - Anti-CEBP Alpha/CEBPA antibody [EP708Y] (ab40761)

Overlay histogram showing HeLa cells stained with ab40761 (red line). The cells were fixed with 80% methanol (5 min) and then permeabilized with 0.1% PBS-Tween for 20 min. The cells were then incubated in 1x PBS / 10% normal goat serum / 0.3M glycine to block non-specific protein-protein interactions followed by the antibody (ab40761, 1/100 dilution) for 30 min at 22°C. The secondary antibody used was DyLight® 488 goat anti-rabbit IgG (H+L) ([ab96899](#)) at 1/500 dilution for 30 min at 22°C. Isotype control antibody (black line) was rabbit IgG (monoclonal) (1µg/1x10⁶ cells) used under the same conditions. Acquisition of >5,000 events was performed.



Western blot - Anti-CEBP Alpha/CEBPA antibody [EP708Y] (ab40761)

This image is courtesy of an anonymous Abreview

Anti-CEBP Alpha/CEBPA antibody [EP708Y] (ab40761) at 1/5000 dilution + Human MCF-7 whole cell lysate at 100000 cells

Secondary

HRP-conjugated Donkey anti-rabbit IgG polyclonal at 1/2000 dilution

Developed using the ECL technique.

Performed under reducing conditions.

Predicted band size: 43 kDa

Observed band size: 40 kDa

Exposure time: 1 minute

Blocked with 5% Milk for 1 hour at 24°C.

We are unsure as to the identity of the 30kda band.

Why choose a recombinant antibody?

- Research with confidence**
Consistent and reproducible results
- Long-term and scalable supply**
Recombinant technology
- Success from the first experiment**
Confirmed specificity
- Ethical standards compliant**
Animal-free production

Anti-CEBP Alpha/CEBPA antibody [EP708Y]
(ab40761)

Please note: All products are "FOR RESEARCH USE ONLY. NOT FOR USE IN DIAGNOSTIC PROCEDURES"

Our Abpromise to you: Quality guaranteed and expert technical support

- Replacement or refund for products not performing as stated on the datasheet
- Valid for 12 months from date of delivery
- Response to your inquiry within 24 hours
- We provide support in Chinese, English, French, German, Japanese and Spanish
- Extensive multi-media technical resources to help you
- We investigate all quality concerns to ensure our products perform to the highest standards

If the product does not perform as described on this datasheet, we will offer a refund or replacement. For full details of the Abpromise, please visit <https://www.abcam.cn/abpromise> or contact our technical team.

Terms and conditions

- Guarantee only valid for products bought direct from Abcam or one of our authorized distributors