




### Anti-CEBP Alpha/CEBPA antibody [15C8] ab15047

**4 References**   **1 图像**

#### 概述

产品名称	Anti-CEBP Alpha/CEBPA抗体[15C8]
描述	小鼠单克隆抗体[15C8] to CEBP Alpha/CEBPA
宿主	Mouse
特异性	This antibody may cross react with glutamate--ammonia ligase domain containing 1 protein ((Lengsin) Lens glutamine synthase-like) as it has 8/10 aa identical to the immunogen used to generate ab15047 (this protein is part of the Glutamate synthetase family so its compartmentalization to the cytoplasm) unlike CEDPA which is found in the nucleus.
经测试应用	<b>适用于:</b> WB
种属反应性	<b>与反应:</b> Human <b>预测可用于:</b> Hamster, Cow, Xenopus laevis, Schizosaccharomyces pombe, Zebrafish, Goldfish, Aspergillus nidulans, Neurospora crassa 
免疫原	Synthetic peptide corresponding to Mouse CEBP Alpha/CEBPA aa 1-14. Sequence: MESADFYEVEPRPP  (Peptide available as <a href="#">ab39791</a> ) <div>  <a href="#">Run BLAST with</a>  <a href="#">Run BLAST with</a> </div>
表位	Amino terminal region.
阳性对照	Transfected hu293T cells.
常规说明	<p>The Life Science industry has been in the grips of a reproducibility crisis for a number of years. Abcam is leading the way in addressing this with our range of recombinant monoclonal antibodies and knockout edited cell lines for gold-standard validation. Please check that this product meets your needs before purchasing.</p> <p>If you have any questions, special requirements or concerns, please send us an inquiry and/or contact our Support team ahead of purchase. Recommended alternatives for this product can be found below, along with publications, customer reviews and Q&amp;As</p>

#### 性能

形式	Liquid
存放说明	Shipped at 4°C. Store at +4°C short term (1-2 weeks). Upon delivery aliquot. Store at -20°C or -

	80°C. Avoid freeze / thaw cycle.
存储溶液	Preservative: 0.05% Sodium azide Constituents: 99% PBS, 0.1% BSA
纯度	Protein G purified
克隆	单克隆
克隆编号	15C8
同种型	IgG

## 应用

**The Abpromise guarantee** Abpromise™ 承诺保证使用 ab15047 于以下的经测试应用

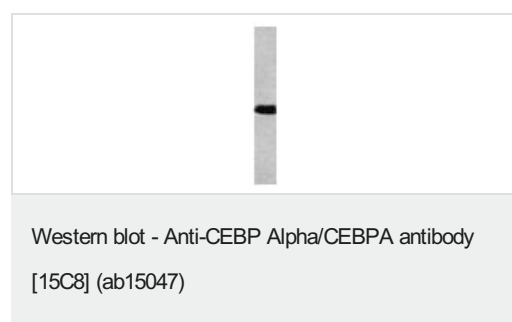
“应用说明”部分 下显示的仅为推荐的起始稀释度;实际最佳的稀释度/浓度应由使用者检定。

应用	Ab 评论	说明
WB		Use a concentration of 2 µg/ml. Detects a band of approximately 45 kDa (predicted molecular weight: 45 kDa).

## 靶标

功能	C/EBP is a DNA-binding protein that recognizes two different motifs: the CCAAT homology common to many promoters and the enhanced core homology common to many enhancers.
序列相似性	Belongs to the bZIP family. C/EBP subfamily. Contains 1 bZIP domain.
细胞定位	Nucleus.

## 图片



Anti-CEBP Alpha/CEBPA antibody [15C8] (ab15047) at 2 µg/ml +  
293 cell lysates transfected with CEBP alpha.

**Predicted band size:** 45 kDa

**Please note:** All products are "FOR RESEARCH USE ONLY. NOT FOR USE IN DIAGNOSTIC PROCEDURES"

## Our Abpromise to you: Quality guaranteed and expert technical support

- Replacement or refund for products not performing as stated on the datasheet
- Valid for 12 months from date of delivery

- Response to your inquiry within 24 hours
- We provide support in Chinese, English, French, German, Japanese and Spanish
- Extensive multi-media technical resources to help you
- We investigate all quality concerns to ensure our products perform to the highest standards

If the product does not perform as described on this datasheet, we will offer a refund or replacement. For full details of the Abpromise, please visit <https://www.abcam.cn/abpromise> or contact our technical team.

#### **Terms and conditions**

---

- Guarantee only valid for products bought direct from Abcam or one of our authorized distributors