


### Anti-CDKL5 antibody ab22453

★★★★★ [1 Abreviews](#) [5 References](#) [1 图像](#)

#### 概述

<b>产品名称</b>	Anti-CDKL5抗体
<b>描述</b>	兔多克隆抗体to CDKL5
<b>宿主</b>	Rabbit
<b>特异性</b>	Swissprot predicts mouse CDKL5 protein to be ~105 kDa (Q3UTQ8), however a recent paper by Lin et al, 2006 (PMID: 16330482) indicated CDKL5 to run at ~118 kDa on WB. On this basis we think that the ~120 kDa band we observe using Rabbit polyclonal to CDKL5 (ab22453) on mouse tissue is CDKL5 specific. Futhermore the ~120 kDa band is blocked by the immunising peptide. The larger ~200 kDa is potentially also CDKL5 as a similar band is also observed in the Lin et al (2006) publication. There is evidence for larger forms of CDKL5 for the human version of the protein, so it may not be surprising to find a similar scenario for the mouse protein.
<b>经测试应用</b>	<b>适用于:</b> WB
<b>种属反应性</b>	<b>与反应:</b> Mouse <b>预测可用于:</b> Human 
<b>免疫原</b>	Synthetic peptide. This information is proprietary to Abcam and/or its suppliers.
<b>常规说明</b>	<p>The Life Science industry has been in the grips of a reproducibility crisis for a number of years. Abcam is leading the way in addressing this with our range of recombinant monoclonal antibodies and knockout edited cell lines for gold-standard validation. Please check that this product meets your needs before purchasing.</p> <p>If you have any questions, special requirements or concerns, please send us an inquiry and/or contact our Support team ahead of purchase. Recommended alternatives for this product can be found below, along with publications, customer reviews and Q&amp;As</p>

#### 性能

<b>形式</b>	Liquid
<b>存放说明</b>	Shipped at 4°C. Store at +4°C short term (1-2 weeks). Upon delivery aliquot. Store at -20°C or -80°C. Avoid freeze / thaw cycle.
<b>存储溶液</b>	pH: 7.40 Preservative: 0.02% Sodium azide Constituent: PBS

Batches of this product that have a concentration < 1mg/ml may have BSA added as a stabilising

agent. If you would like information about the formulation of a specific lot, please contact our scientific support team who will be happy to help.

**纯度** Immunogen affinity purified  
**克隆** 多克隆  
**同种型** IgG

## 应用

**The Abpromise guarantee** **Abpromise™**承诺保证使用ab22453于以下的经测试应用

“应用说明”部分 下显示的仅为推荐的起始稀释度;实际最佳的稀释度/浓度应由使用者检定。

应用	Ab评论	说明
<b>WB</b>		Use a concentration of 1 - 3 µg/ml. Detects a band of approximately 120,160 kDa (predicted molecular weight: 105 kDa).

## 靶标

**功能** Mediates phosphorylation of MECP2.

**组织特异性** Expressed in brain, lung, kidney, prostate, ovary, placenta, pancreas and testis.

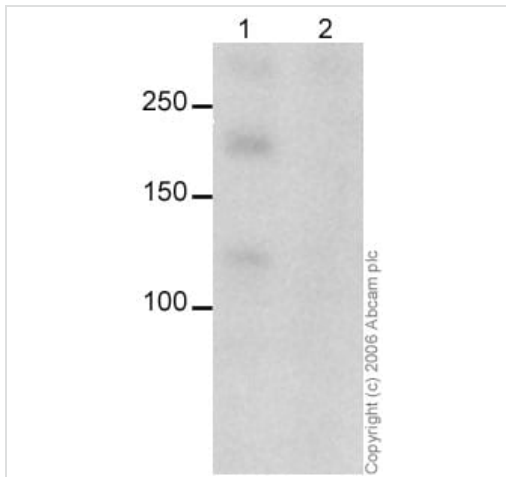
**疾病相关** Note=Chromosomal aberrations involving CDKL5 are found in patients manifesting early-onset seizures and spasms and psychomotor impairment. Translocation t(X;6)(p22.3;q14); translocation t(X;7)(p22.3;p15).  
Defects in CDKL5 are a cause of epileptic encephalopathy early infantile type 2 (EIEE2) [MIM:300672]; also known as atypical CDKL5-related Rett syndrome. EIEE2 is a severe form of epilepsy characterized by seizures or spasms beginning in infancy. Patients manifest features resembling Rett syndrome such as microcephaly, lack of speech development, stereotypic hand movements.

**序列相似性** Belongs to the protein kinase superfamily. CMGC Ser/Thr protein kinase family. CDC2/CDKX subfamily.  
Contains 1 protein kinase domain.

**翻译后修饰** Autophosphorylated.

**细胞定位** Nucleus.

## 图片



Western blot - Anti-CDKL5 antibody (ab22453)

This image is courtesy of Chris Anderson, Wellcome Trust Sanger Institute, United Kingdom

**All lanes :** Anti-CDKL5 antibody (ab22453) at 3 µg/ml

**Lane 1 :** mouse cortex

**Lane 2 :** mouse cortex with Human CDKL5 peptide (**ab25756**) at 2 µg/ml

Lysates/proteins at 20 µg per lane.

**Predicted band size:** 105 kDa

**Observed band size:** 120,200 kDa

**Exposure time:** 10 minutes

Swissprot predicts mouse CDKL5 protein to be ~105kDa (Q3UTQ8), however a recent paper by Lin et al, 2006 (PMID: 16330482) indicated CDKL5 to run at ~118kDa on WB. On this basis we think that the ~120kDa band we observe using Rabbit polyclonal to CDKL5 (ab22453) on mouse tissue is CDKL5 specific. Furthermore the ~120kDa band is blocked by the immunising peptide. The larger >150kDa is potentially also CDKL5 as a similar band is also observed in the Lin et al (2006) publication. There is evidence for larger forms of CDKL5 for the human version of the protein, so it may not be surprising to find a similar scenario for the mouse protein.

**Please note:** All products are "FOR RESEARCH USE ONLY. NOT FOR USE IN DIAGNOSTIC PROCEDURES"

### Our Abpromise to you: Quality guaranteed and expert technical support

- Replacement or refund for products not performing as stated on the datasheet
- Valid for 12 months from date of delivery
- Response to your inquiry within 24 hours
- We provide support in Chinese, English, French, German, Japanese and Spanish
- Extensive multi-media technical resources to help you

- We investigate all quality concerns to ensure our products perform to the highest standards

If the product does not perform as described on this datasheet, we will offer a refund or replacement. For full details of the Abpromise, please visit <https://www.abcam.cn/abpromise> or contact our technical team.

### **Terms and conditions**

---

- Guarantee only valid for products bought direct from Abcam or one of our authorized distributors