


# Anti-CDKA1 / DOC1 antibody [Clone-R76] ab108290

**重组** RabMAb

## 1 References 2 图像

### 概述

|       |  |
|-------|--|
| 产品名称  | Anti-CDKA1 / DOC1抗体[Clone-R76]   |
| 描述    | 兔单克隆抗体[Clone-R76] to CDKA1 / DOC1  |
| 宿主    | Rabbit   |
| 经测试应用 | <b>适用于:</b> WB<br><b>不适用于:</b> Flow Cyt, ICC/IF, IHC-P or IP   |
| 种属反应性 | <b>与反应:</b> Human<br><b>预测可用于:</b> Mouse    |
| 免疫原   | Synthetic peptide corresponding to Human CDKA1/ DOC1.  |
| 阳性对照  | 293T, HeLa, HUVEC and LNCaP cell lysates   |
| 常规说明  | <p>This product is a recombinant monoclonal antibody, which offers several advantages including:</p> <ul style="list-style-type: none"> <li>- High batch-to-batch consistency and reproducibility</li> <li>- Improved sensitivity and specificity</li> <li>- Long-term security of supply</li> <li>- Animal-free production</li> </ul> <p>For more information <a href="#">see here</a>.</p> <p>Our RabMAb<sup>®</sup> technology is a patented hybridoma-based technology for making rabbit monoclonal antibodies. For details on our patents, please refer to <a href="#">RabMAb<sup>®</sup> patents</a>.</p> <p>Rat: We have preliminary internal testing data to indicate this antibody may not react with this species. Please contact us for more information.</p> |

### 性能

|      |   |
|------|---|
| 形式   | Liquid  |
| 存放说明 | Shipped at 4°C. Store at -20°C. Stable for 12 months at -20°C.  |
| 存储溶液 | pH: 7.20<br>Preservative: 0.01% Sodium azide<br>Constituents: 59% PBS, 40% Glycerol (glycerin, glycerine), 0.5% BSA |
| 纯度   | Protein A purified  |
| 克隆   | 单克隆   |

克隆编号

Clone-R76

同种型

IgG

应用

The Abpromise guarantee

Abpromise™承诺保证使用ab108290于以下的经测试应用

“应用说明”部分 下显示的仅为推荐的起始稀释度;实际最佳的稀释度/浓度应由使用者检定。

| 应用 | Ab评论 | 说明  |
|----|------|---|
| WB |      | 1/1000 - 1/10000. Predicted molecular weight: 12 kDa. |

应用说明

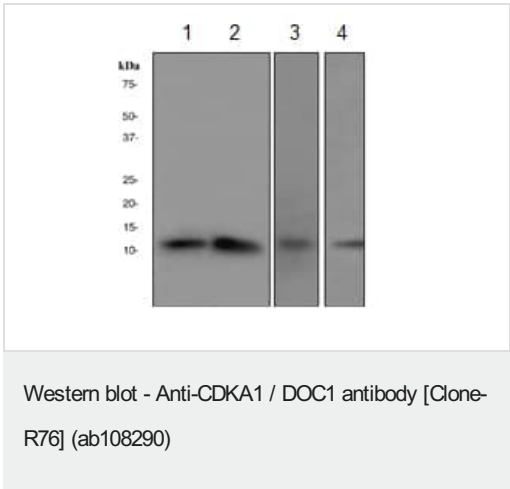
Is unsuitable for Flow Cyt, ICC/IF, IHC-P or IP.

靶标

序列相似性

Belongs to the CDK2AP family.

图片



**All lanes :** Anti-CDKA1 / DOC1 antibody [Clone-R76] (ab108290) at 1/1000 dilution

**Lane 1 :** 293T cell lysate  
**Lane 2 :** HeLa cell lysate  
**Lane 3 :** HUVEC cell lysate  
**Lane 4 :** LNCaP cell lysate

Lysates/proteins at 10 µg per lane.

**Predicted band size:** 12 kDa

### Why choose a recombinant antibody?



**Research with confidence**  
Consistent and reproducible results



**Long-term and scalable supply**  
Recombinant technology



**Success from the first experiment**  
Confirmed specificity



**Ethical standards compliant**  
Animal-free production

Anti-CDKA1 / DOC1 antibody [Clone-R76]  
(ab108290)

**Please note:** All products are "FOR RESEARCH USE ONLY. NOT FOR USE IN DIAGNOSTIC PROCEDURES"

### Our Abpromise to you: Quality guaranteed and expert technical support

---

- Replacement or refund for products not performing as stated on the datasheet
- Valid for 12 months from date of delivery
- Response to your inquiry within 24 hours
- We provide support in Chinese, English, French, German, Japanese and Spanish
- Extensive multi-media technical resources to help you
- We investigate all quality concerns to ensure our products perform to the highest standards

If the product does not perform as described on this datasheet, we will offer a refund or replacement. For full details of the Abpromise, please visit <https://www.abcam.cn/abpromise> or contact our technical team.

### Terms and conditions

---

- Guarantee only valid for products bought direct from Abcam or one of our authorized distributors