

Anti-Cdk6 antibody [8H4] ab54576

敲除 验证

14 References [3 图像](#)

概述

产品名称	Anti-Cdk6抗体[8H4]
描述	小鼠单克隆抗体[8H4] to Cdk6
宿主	Mouse
经测试应用	适用于: WB
种属反应性	与反应: Human
免疫原	Recombinant fragment: KDGLCRADQQ YECVAEIGEG AYGKVFKARD LKNGGRFVAL KRVRVQTGEE GMPLSTIREV AVLRHLETFE HPNVVRLFDV CTVSRTDRET KLTLVFE, corresponding to amino acids 3-100 of Human Cdk6 Run BLAST with ExPASy Run BLAST with NCBI
阳性对照	WB: HAP1, HeLa and Jurkat cell lysates.
常规说明	<p>This product was changed from ascites to tissue culture supernatant on 5th December 2019. Lot numbers higher than GR3279055 are from tissue culture supernatant. Please note that the dilutions may need to be adjusted accordingly. If you have any questions, please do not hesitate to contact our scientific support team.</p> <p>The Life Science industry has been in the grips of a reproducibility crisis for a number of years. Abcam is leading the way in addressing this with our range of recombinant monoclonal antibodies and knockout edited cell lines for gold-standard validation. Please check that this product meets your needs before purchasing.</p> <p>If you have any questions, special requirements or concerns, please send us an inquiry and/or contact our Support team ahead of purchase. Recommended alternatives for this product can be found below, along with publications, customer reviews and Q&As</p>

性能

形式	Liquid
存放说明	Shipped at 4°C. Upon delivery aliquot and store at -20°C or -80°C. Avoid repeated freeze / thaw cycles.
存储溶液	pH: 7.4
纯度	Tissue culture supernatant

克隆	单克隆
克隆编号	8H4
同种型	IgG1
轻链类型	kappa

应用

The Abpromise guarantee **Abpromise™** 承诺保证使用 ab54576 于以下的经测试应用

“应用说明”部分 下显示的仅为推荐的起始稀释度；实际最佳的稀释度/浓度应由使用者检定。

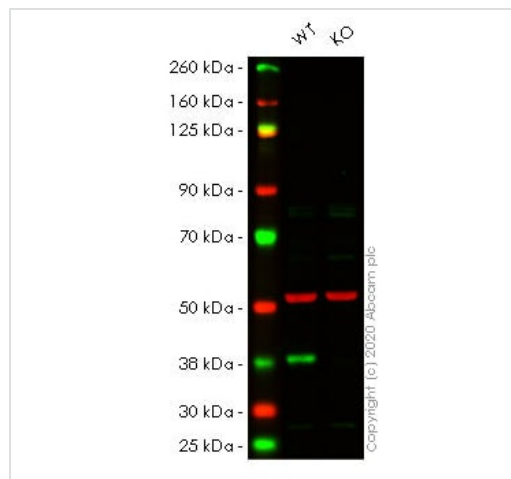
应用	Ab评论	说明
WB		Use at an assay dependent concentration. Predicted molecular weight: 37 kDa.

靶标

功能 Probably involved in the control of the cell cycle. Interacts with D-type G1 cyclins.

序列相似性 Belongs to the protein kinase superfamily. CMGC Ser/Thr protein kinase family. CDC2/CDKX subfamily.
Contains 1 protein kinase domain.

图片



Western blot - Anti-Cdk6 antibody [8H4] (ab54576)

All lanes : Anti-Cdk6 antibody [8H4] (ab54576)

Lane 1 : Wild-type HeLa cell lysate

Lane 2 : CDK6 knockout HeLa cell lysate

Lysates/proteins at 20 µg per lane.

Performed under reducing conditions.

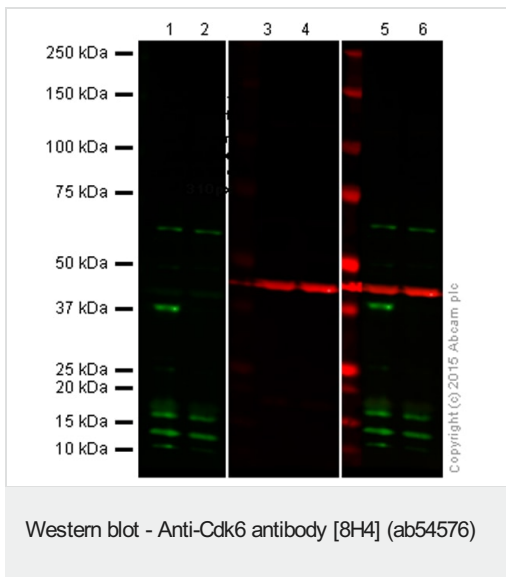
Predicted band size: 37 kDa

Observed band size: 37 kDa

Lanes 1-2: Merged signal (red and green). Green - ab54576 observed at 37 kDa. Red - Anti-alpha Tubulin antibody [EP1332Y] - Microtubule Marker (**ab52866**) observed at 50 kDa.

ab54576 was shown to react with Cdk6 in wild-type HeLa cells in western blot. Loss of signal was observed when knockout cell line

ab266059 (knockout cell lysate **ab257088**) was used. Wild-type HeLa and CDK6 knockout HeLa cell lysates were subjected to SDS-PAGE. Membrane was blocked for 1 hour at room temperature in 0.1% TBST with 3% non-fat dried milk. ab54576 and Anti-alpha Tubulin antibody [EP1332Y] - Microtubule Marker (**ab52866**) overnight at 4°C at a 1 µg/ml and a 1 in 20000 dilution respectively. Blots were developed with Goat anti-Mouse IgG H&L (IRDye®800CW) preadsorbed (**ab216772**) and Goat Anti-Rabbit IgG H&L (IRDye®680RD) preadsorbed (**ab216777**) secondary antibodies at 1 in 20000 dilution for 1 hour at room temperature before imaging.



Lanes 1-2 : Anti-Cdk6 antibody [8H4] (ab54576) at 1 µg

Lanes 3-4 : Anti-beta Actin antibody (**ab8227**) at 1/2000 dilution

Lanes 1 & 3 : Wild-type HAP1 cell lysate

Lanes 2 & 4 : CDK6 knockout HAP1 cell lysate

Lysates/proteins at 20 µg per lane.

Predicted band size: 37 kDa

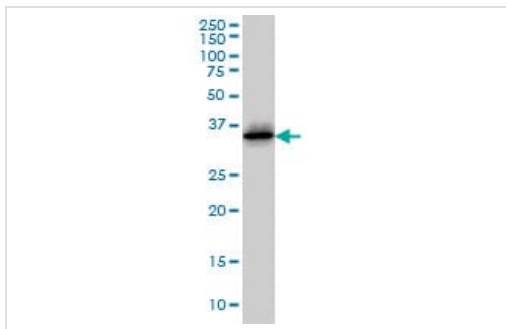
Lanes 1 and 2: Green signal from target – ab54576 observed at 37 kDa

Lanes 3 and 4: Red signal from loading control – **ab8227** observed at 42 kDa

Lanes 5 and 6: Merged (red and green) signal

ab54576 was shown to react with CDK6 when CDK6 knockout samples were used, along with additional cross-reactive bands. Wild-type and CDK6 knockout samples were subjected to SDS-PAGE. ab54576 and **ab8227** (loading control to beta actin) were diluted 1 µg/mL and 1/2000 respectively and incubated overnight at 4°C. Blots were developed with Goat anti-Mouse IgG H&L (IRDye® 800CW) preadsorbed (**ab216772**) and Goat Anti-Rabbit IgG H&L (IRDye® 680RD) preadsorbed (**ab216777**) secondary antibodies at 1/10 000 dilution for 1 h at room temperature before imaging.

This image was generated using the ascites version of the product.



Western blot - Anti-Cdk6 antibody [8H4] (ab54576)

Cdk6 antibody (ab54576) at 1ug/lane + Jurkat cell lysate at 25ug/lane.

This image was generated using the ascites version of the product.

Please note: All products are "FOR RESEARCH USE ONLY. NOT FOR USE IN DIAGNOSTIC PROCEDURES"

Our Abpromise to you: Quality guaranteed and expert technical support

- Replacement or refund for products not performing as stated on the datasheet
- Valid for 12 months from date of delivery
- Response to your inquiry within 24 hours
- We provide support in Chinese, English, French, German, Japanese and Spanish
- Extensive multi-media technical resources to help you
- We investigate all quality concerns to ensure our products perform to the highest standards

If the product does not perform as described on this datasheet, we will offer a refund or replacement. For full details of the Abpromise, please visit <https://www.abcam.cn/abpromise> or contact our technical team.

Terms and conditions

- Guarantee only valid for products bought direct from Abcam or one of our authorized distributors