

Anti-Cdk2 antibody - C-terminal ab224771

2 图像

概述

产品名称	Anti-Cdk2抗体- C-terminal
描述	兔多克隆抗体to Cdk2 - C-terminal
宿主	Rabbit
经测试应用	适用于: WB, IHC-P
种属反应性	与反应: Human
免疫原	Synthetic peptide. This information is proprietary to Abcam and/or its suppliers.
阳性对照	WB: HeLa whole cell lysate (ab150035). IHC-P: Human tonsil tissue.
常规说明	<p>This product is FOR RESEARCH USE ONLY. For commercial use, please contact partnerships@abcam.com.</p> <p>The Life Science industry has been in the grips of a reproducibility crisis for a number of years. Abcam is leading the way in addressing this with our range of recombinant monoclonal antibodies and knockout edited cell lines for gold-standard validation. Please check that this product meets your needs before purchasing.</p> <p>If you have any questions, special requirements or concerns, please send us an inquiry and/or contact our Support team ahead of purchase. Recommended alternatives for this product can be found below, along with publications, customer reviews and Q&As</p>

性能

形式	Liquid
存放说明	Shipped at 4°C. Store at +4°C short term (1-2 weeks). Upon delivery aliquot. Store at -20°C long term. Avoid freeze / thaw cycle.
存储溶液	<p>pH: 7.60</p> <p>Preservative: 0.1% Sodium azide</p> <p>Constituents: PBS, 1% BSA</p>
纯度	Immunogen affinity purified
克隆	多克隆
同种型	IgG

The Abpromise guarantee **Abpromise™**承诺保证使用ab224771于以下的经测试应用

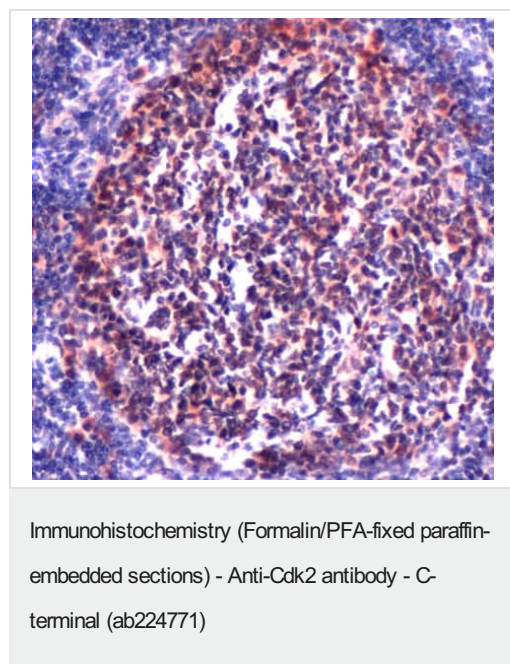
“应用说明”部分 下显示的仅为推荐的起始稀释度;实际最佳的稀释度/浓度应由使用者检定。

应用	Ab评论	说明
WB		1/25. Predicted molecular weight: 34 kDa.
IHC-P		1/100. Perform heat mediated antigen retrieval with EDTA buffer before commencing with IHC staining protocol.

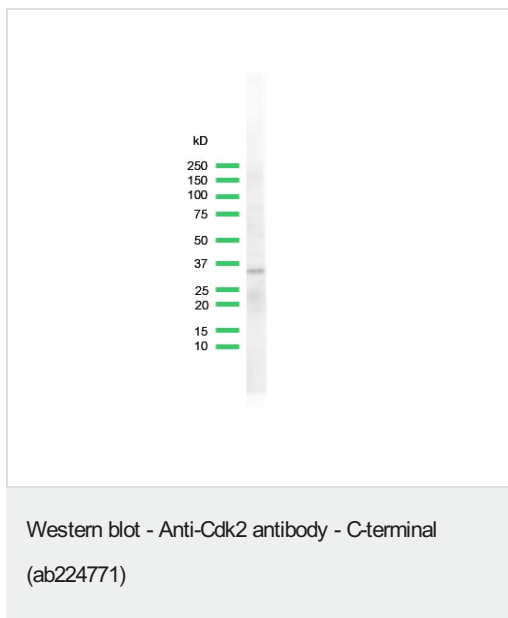
靶标

功能	Involved in the control of the cell cycle. Interacts with cyclins A, B1, B3, D, or E. Activity of CDK2 is maximal during S phase and G2.
序列相似性	Belongs to the protein kinase superfamily. CMGC Ser/Thr protein kinase family. CDC2/CDKX subfamily. Contains 1 protein kinase domain.

图片



Formalin-fixed, paraffin-embedded human tonsil tissue stained for Cdk2 using ab224771 at 1/100 dilution in immunohistochemical analysis.



Anti-Cdk2 antibody - C-terminal (ab224771) at 1/25 dilution + HeLa (human epithelial cell line from cervix adenocarcinoma) cell lysate

Predicted band size: 34 kDa

Please note: All products are "FOR RESEARCH USE ONLY. NOT FOR USE IN DIAGNOSTIC PROCEDURES"

Our Abpromise to you: Quality guaranteed and expert technical support

- Replacement or refund for products not performing as stated on the datasheet
- Valid for 12 months from date of delivery
- Response to your inquiry within 24 hours
- We provide support in Chinese, English, French, German, Japanese and Spanish
- Extensive multi-media technical resources to help you
- We investigate all quality concerns to ensure our products perform to the highest standards

If the product does not perform as described on this datasheet, we will offer a refund or replacement. For full details of the Abpromise, please visit <https://www.abcam.cn/abpromise> or contact our technical team.

Terms and conditions

- Guarantee only valid for products bought direct from Abcam or one of our authorized distributors