

### Anti-CDK1 (phospho Y15) antibody ab47594

★★★★★ [2 Abreviews](#) [38 References](#) [3 图像](#)

#### 概述

产品名称	Anti-CDK1 (phospho Y15)抗体
描述	兔多克隆抗体to CDK1 (phospho Y15)
宿主	Rabbit
经测试应用	适用于: WB
种属反应性	与反应: Human, African green monkey
免疫原	Synthetic peptide corresponding to Human CDK1 aa 1-100 (phospho Y15). Database link: <a href="#">P06493</a>
常规说明	<p>The Life Science industry has been in the grips of a reproducibility crisis for a number of years. Abcam is leading the way in addressing this with our range of recombinant monoclonal antibodies and knockout edited cell lines for gold-standard validation. Please check that this product meets your needs before purchasing.</p> <p>If you have any questions, special requirements or concerns, please send us an inquiry and/or contact our Support team ahead of purchase. Recommended alternatives for this product can be found below, along with publications, customer reviews and Q&amp;As</p>

#### 性能

形式	Liquid
存放说明	Shipped at 4°C. Upon delivery aliquot and store at -20°C. Avoid freeze / thaw cycles.
存储溶液	pH: 7.40 Preservative: 0.02% Sodium azide Constituents: PBS, 50% Glycerol (glycerin, glycerine), 0.87% Sodium chloride
纯度	Immunogen affinity purified
纯化说明	The antibody was affinity purified from rabbit antiserum by affinity chromatography using epitope specific phosphopeptide. The antibody against non phosphopeptide was removed by chromatography using non phosphopeptide corresponding to the phosphorylation site.
克隆	多克隆
同种型	IgG

#### 应用

The Abpromise guarantee

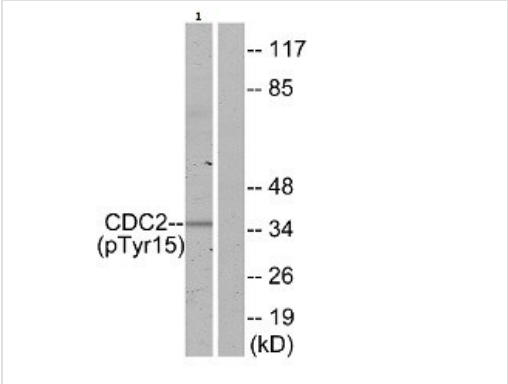
Abpromise™承诺保证使用ab47594于以下的经测试应用

“应用说明”部分 下显示的仅为推荐的起始稀释度;实际最佳的稀释度/浓度应由使用者检定。

应用	Ab评论	说明
WB	★★★★★ (1)	1/500 - 1/1000. Detects a band of approximately 35 kDa (predicted molecular weight: 34 kDa).

靶标	
功能	Plays a key role in the control of the eukaryotic cell cycle. It is required in higher cells for entry into S-phase and mitosis. p34 is a component of the kinase complex that phosphorylates the repetitive C-terminus of RNA polymerase II.
组织特异性	Isoform 2 is found in breast cancer tissues.
序列相似性	Belongs to the protein kinase superfamily. CMGC Ser/Thr protein kinase family. CDC2/CDKX subfamily. Contains 1 protein kinase domain.
细胞定位	Nucleus.
形式	CDK1 can be located to the Nucleus, cytoplasm and Mitochondria. It's cytoplasmic during interphase and reversibly translocated from cytoplasm to the nucleus when phosphorylated before G2-M transition when associated with cyclin-B1. Accumulates in mitochondria in G2-arrested cells upon DNA-damage.

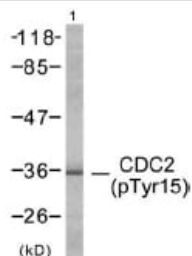
图片



Anti-CDK1 (phospho Y15) antibody (ab47594) at 1/500 dilution +  
COS-7 cells (African green monkey kidney fibroblast-like)

Predicted band size: 34 kDa

Western blot - Anti-CDK1 (phospho Y15) antibody  
(ab47594)

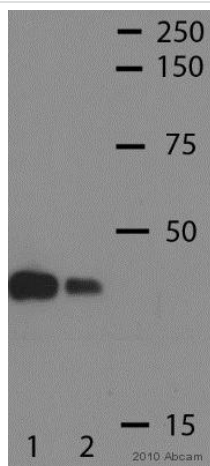


Western blot - Anti-CDK1 (phospho Y15) antibody (ab47594)

Anti-CDK1 (phospho Y15) antibody (ab47594) at 1/500 dilution + HepG2 cell extract

**Predicted band size:** 34 kDa

**Observed band size:** 35 kDa



Western blot - Anti-CDK1 (phospho Y15) antibody (ab47594)

This image is courtesy of an anonymous abreview.

**All lanes :** Anti-CDK1 (phospho Y15) antibody (ab47594) at 1/1000 dilution

**Lane 1 :** untreated HeLa cell lysate

**Lane 2 :** HeLa cell lysate treated with nocodazole (500ng/mL) for 16 h

Lysates/proteins at 20 µg per lane.

#### Secondary

**All lanes :** polyclonal goat HRP conjugated at 1/2000 dilution

Developed using the ECL technique.

**Predicted band size:** 34 kDa

**Observed band size:** 34 kDa

**Exposure time:** 1 minute

Blocking: 5% milk for 1 hour at 25°C.

**Please note:** All products are "FOR RESEARCH USE ONLY. NOT FOR USE IN DIAGNOSTIC PROCEDURES"

#### Our Abpromise to you: Quality guaranteed and expert technical support

- Replacement or refund for products not performing as stated on the datasheet
- Valid for 12 months from date of delivery
- Response to your inquiry within 24 hours
- We provide support in Chinese, English, French, German, Japanese and Spanish
- Extensive multi-media technical resources to help you

- We investigate all quality concerns to ensure our products perform to the highest standards

If the product does not perform as described on this datasheet, we will offer a refund or replacement. For full details of the Abpromise, please visit <https://www.abcam.cn/abpromise> or contact our technical team.

#### **Terms and conditions**

---

- Guarantee only valid for products bought direct from Abcam or one of our authorized distributors