


### Anti-CDK1 (phospho T14) antibody ab58509

**3 References**   **3 图像**

#### 概述

产品名称	Anti-CDK1 (phospho T14)抗体
描述	兔多克隆抗体to CDK1 (phospho T14)
宿主	Rabbit
特异性	<p>ab58509 peptide sequence is 100% identical to the sequence of CDK1 and CDK2. Therefore, this antibody is predicted to recognize both proteins.</p> <p>Detects endogenous levels of CDC2 only when phosphorylated at threonine 14.</p>
经测试应用	适用于: WB, ICC/IF
种属反应性	<p>与反应: Human, African green monkey</p> <p>预测可用于: Mouse, Rat </p>
免疫原	<p>Synthetic peptide corresponding to Human CDK1 aa 1-100 (phospho T14).</p> <p>Database link: <a href="#">P06493</a></p>
常规说明	<p>The Life Science industry has been in the grips of a reproducibility crisis for a number of years. Abcam is leading the way in addressing this with our range of recombinant monoclonal antibodies and knockout edited cell lines for gold-standard validation. Please check that this product meets your needs before purchasing.</p> <p>If you have any questions, special requirements or concerns, please send us an inquiry and/or contact our Support team ahead of purchase. Recommended alternatives for this product can be found below, along with publications, customer reviews and Q&amp;As</p>

#### 性能

形式	Liquid
存放说明	Shipped at 4°C. Upon delivery aliquot. Store at -20°C. Avoid freeze / thaw cycle. Stable for 12 months at -20°C.
存储溶液	<p>pH: 7.40</p> <p>Preservative: 0.02% Sodium azide</p> <p>Constituents: PBS, 50% Glycerol (glycerin, glycerine), 0.87% Sodium chloride</p>
纯度	Immunogen affinity purified
纯化说明	Affinity-purified from rabbit antiserum by affinity-chromatography using epitope-specific phosphopeptide. The antibody against non-phosphopeptide was removed by chromatography using non-phosphopeptide corresponding to the phosphorylation site.

克隆

多克隆

同种型

IgG

应用

The Abpromise guarantee      **Abpromise™**承诺保证使用ab58509于以下的经测试应用

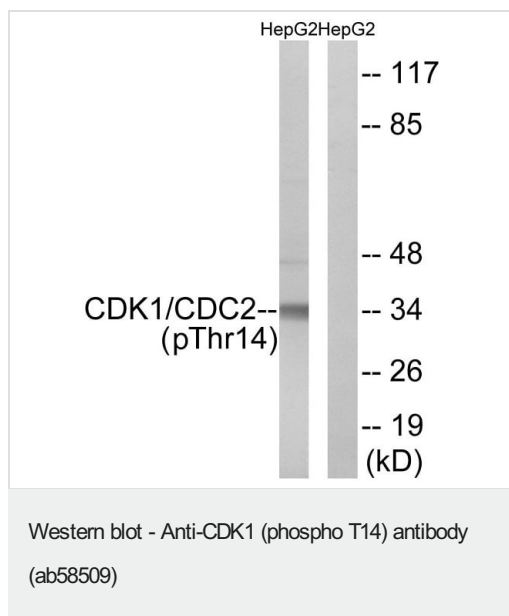
“应用说明”部分 下显示的仅为推荐的起始稀释度;实际最佳的稀释度/浓度应由使用者检定。

应用	Ab评论	说明
WB		1/500 - 1/1000. Detects a band of approximately 32 kDa (predicted molecular weight: 34 kDa).
ICC/IF		1/100 - 1/500.

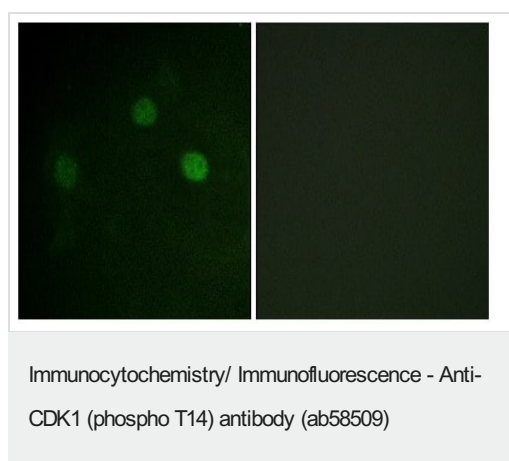
靶标

功能	Plays a key role in the control of the eukaryotic cell cycle. It is required in higher cells for entry into S-phase and mitosis. p34 is a component of the kinase complex that phosphorylates the repetitive C-terminus of RNA polymerase II.
组织特异性	Isoform 2 is found in breast cancer tissues.
序列相似性	Belongs to the protein kinase superfamily. CMGC Ser/Thr protein kinase family. CDC2/CDKX subfamily. Contains 1 protein kinase domain.
细胞定位	Nucleus.
形式	CDK1 can be located to the Nucleus, cytoplasm and Mithochondria. It's cytoplasmic during interphase and reversibly translocated from cytoplasm to the nucleus when phosphorylated before G2-M transition when associated with cyclin-B1. Accumulates in mitochondria in G2-arrested cells upon DNA-damage.

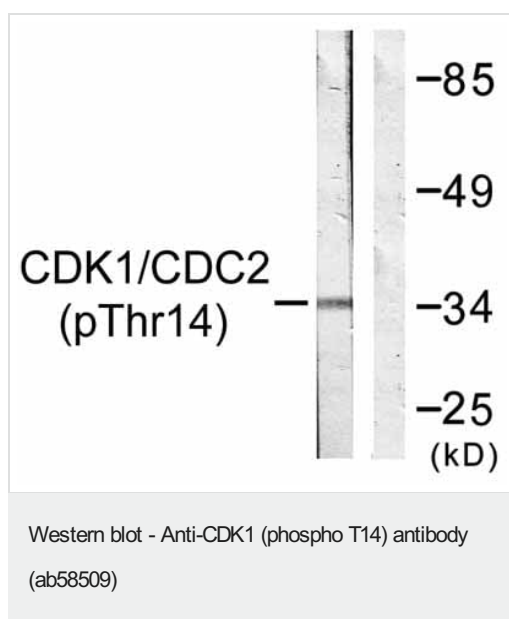
图片



Western blot analysis of lysates from HepG2 cells treated with Forskolin 40nM for 30 mins, using CDK1 (phospho T14) Antibody (ab58509). The lane on the right is blocked with the phospho peptide.



Immunofluorescence analysis of COS7 cells using ab58509 at 1/1000 dilution.



**All lanes :** Anti-CDK1 (phospho T14) antibody (ab58509) at 1/500 dilution

**Lane 1 :** Extracts from HepG2 cells, treated with Forskolin (40nM, 30mins)

**Lane 2 :** Extracts from HepG2 cells, treated with Forskolin (40nM, 30mins), plus immunising peptide

**Predicted band size:** 34 kDa

**Please note:** All products are "FOR RESEARCH USE ONLY. NOT FOR USE IN DIAGNOSTIC PROCEDURES"

### **Our Abpromise to you: Quality guaranteed and expert technical support**

---

- Replacement or refund for products not performing as stated on the datasheet
- Valid for 12 months from date of delivery
- Response to your inquiry within 24 hours
  
- We provide support in Chinese, English, French, German, Japanese and Spanish
- Extensive multi-media technical resources to help you
- We investigate all quality concerns to ensure our products perform to the highest standards

If the product does not perform as described on this datasheet, we will offer a refund or replacement. For full details of the Abpromise, please visit <https://www.abcam.cn/abpromise> or contact our technical team.

### **Terms and conditions**

---

- Guarantee only valid for products bought direct from Abcam or one of our authorized distributors