


Anti-CDC7 antibody [EPR4730] ab108332

重组 RabMAb

1 Abreviews 3 References 3 图像

概述

产品名称	Anti-CDC7抗体[EPR4730]
描述	兔单克隆抗体[EPR4730] to CDC7
宿主	Rabbit
经测试应用	适用于: Flow Cyt (Intra), WB 不适用于: ICC/IF, IHC-P or IP
种属反应性	与反应: Human 预测可用于: Mouse, Rat 
免疫原	Synthetic peptide. This information is proprietary to Abcam and/or its suppliers.
阳性对照	Jurkat, HeLa, and PC3 cell lysates; Jurkat cells.
常规说明	<p>This product is a recombinant monoclonal antibody, which offers several advantages including:</p> <ul style="list-style-type: none">- High batch-to-batch consistency and reproducibility- Improved sensitivity and specificity- Long-term security of supply- Animal-free production <p>For more information see here.</p> <p>Our RabMAb[®] technology is a patented hybridoma-based technology for making rabbit monoclonal antibodies. For details on our patents, please refer to RabMAb[®] patents.</p>

性能

形式	Liquid
存放说明	Shipped at 4°C. Store at -20°C. Stable for 12 months at -20°C.
存储溶液	pH: 7.20 Preservative: 0.05% Sodium azide Constituents: 0.1% BSA, 40% Glycerol (glycerin, glycerine), 9.85% Tris glycine, 50% Tissue culture supernatant
纯度	Tissue culture supernatant
克隆	单克隆
克隆编号	EPR4730

同种型IgG

应用

The Abpromise guarantee Abpromise™承诺保证使用ab108332于以下的经测试应用
“应用说明”部分 下显示的仅为推荐的起始稀释度;实际最佳的稀释度/浓度应由使用者检定。

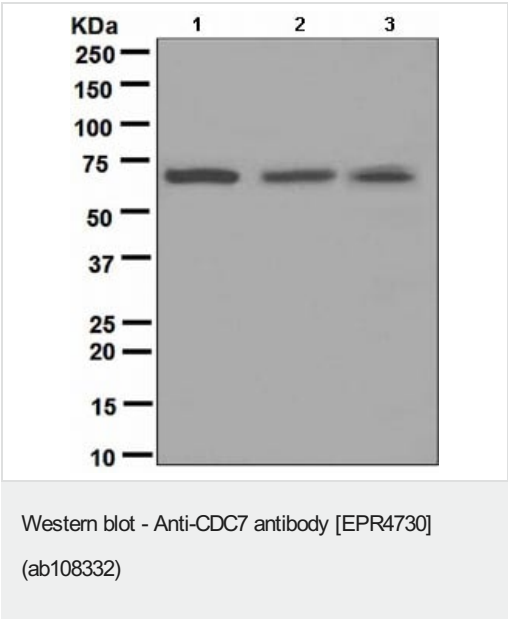
应用	Ab评论	说明
Flow Cyt (Intra)		1/100 - 1/500. ab172730 - Rabbit monoclonal IgG, is suitable for use as an isotype control with this antibody.
WB		1/1000 - 1/10000. Detects a band of approximately 64 kDa (predicted molecular weight: 64 kDa).

应用说明Is unsuitable for ICC/IF,IHC-P or IP.

靶标

功能	Seems to phosphorylate critical substrates that regulate the G1/S phase transition and/or DNA replication. Can phosphorylates MCM2 and MCM3.
序列相似性	Belongs to the protein kinase superfamily. Ser/Thr protein kinase family. CDC7 subfamily. Contains 1 protein kinase domain.
细胞定位	Nucleus.

图片

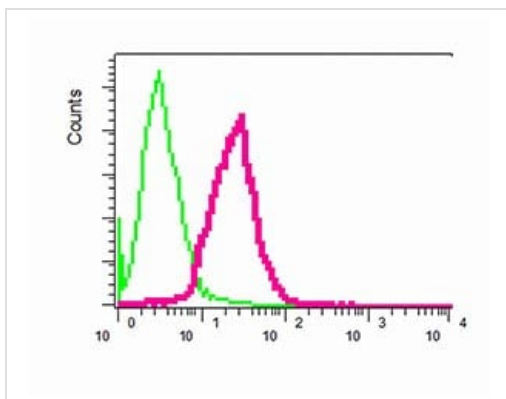


All lanes : Anti-CDC7 antibody [EPR4730] (ab108332) at 1/1000 dilution

Lane 1 : Jurkat cell lysate
Lane 2 : HeLa cell lysate
Lane 3 : PC3 cell lysate

Lysates/proteins at 10 µg per lane.

Predicted band size: 64 kDa



Flow Cytometry (Intracellular) - Anti-CDC7 antibody
[EPR4730] (ab108332)

ab108332, at 1/100 dilution, staining CDC7 in permeabilized Jurkat cells by intracellular flow cytometry (red). Rabbit IgG (green).

Why choose a recombinant antibody?

 <p>Research with confidence Consistent and reproducible results</p>	 <p>Long-term and scalable supply Recombinant technology</p>
 <p>Success from the first experiment Confirmed specificity</p>	 <p>Ethical standards compliant Animal-free production</p>

Anti-CDC7 antibody [EPR4730] (ab108332)

Please note: All products are "FOR RESEARCH USE ONLY. NOT FOR USE IN DIAGNOSTIC PROCEDURES"

Our Abpromise to you: Quality guaranteed and expert technical support

- Replacement or refund for products not performing as stated on the datasheet
- Valid for 12 months from date of delivery
- Response to your inquiry within 24 hours
- We provide support in Chinese, English, French, German, Japanese and Spanish
- Extensive multi-media technical resources to help you
- We investigate all quality concerns to ensure our products perform to the highest standards

If the product does not perform as described on this datasheet, we will offer a refund or replacement. For full details of the Abpromise, please visit <https://www.abcam.cn/abpromise> or contact our technical team.

Terms and conditions

- Guarantee only valid for products bought direct from Abcam or one of our authorized distributors