

Anti-Cdc6 (phospho S106) antibody [EPR761(2)] ab76422

重组 RabMAb

2 References **2 图像**

概述

产品名称	Anti-Cdc6 (phospho S106)抗体[EPR761(2)]
描述	兔单克隆抗体[EPR761(2)] to Cdc6 (phospho S106)
宿主	Rabbit
经测试应用	适用于: WB
种属反应性	与反应: Human
免疫原	Synthetic peptide. This information is proprietary to Abcam and/or its suppliers. (Peptide available as ab197758)
阳性对照	WB: Raji whole cell lysate.
常规说明	<p>This product is a recombinant monoclonal antibody, which offers several advantages including:</p> <ul style="list-style-type: none"> - High batch-to-batch consistency and reproducibility - Improved sensitivity and specificity - Long-term security of supply - Animal-free production <p>For more information see here.</p> <p>Our RabMAb[®] technology is a patented hybridoma-based technology for making rabbit monoclonal antibodies. For details on our patents, please refer to RabMAb[®] patents.</p> <p>Mouse, Rat: We have preliminary internal testing data to indicate this antibody may not react with these species. Please contact us for more information.</p>

性能

形式	Liquid
存放说明	Shipped at 4°C. Store at +4°C short term (1-2 weeks). Upon delivery aliquot. Store at -20°C long term. Avoid freeze / thaw cycle.
存储溶液	<p>pH: 7.20</p> <p>Preservative: 0.01% Sodium azide</p> <p>Constituents: 0.05% BSA, 40% Glycerol (glycerin, glycerine), 59% PBS</p>
纯度	Protein A purified
克隆	单克隆

克隆编号EPR761(2)

同种型IgG

应用

The Abpromise guarantee **Abpromise™**承诺保证使用ab76422于以下的经测试应用

“应用说明”部分 下显示的仅为推荐的起始稀释度;实际最佳的稀释度/浓度应由使用者检定。

应用	Ab评论	说明
WB		1/1000 - 1/2000. Detects a band of approximately 63 kDa (predicted molecular weight: 63 kDa).Can be blocked with Cdc6 (phospho S106) peptide (ab197758) .

靶标

功能

Involved in the initiation of DNA replication. Also participates in checkpoint controls that ensure DNA replication is completed before mitosis is initiated.

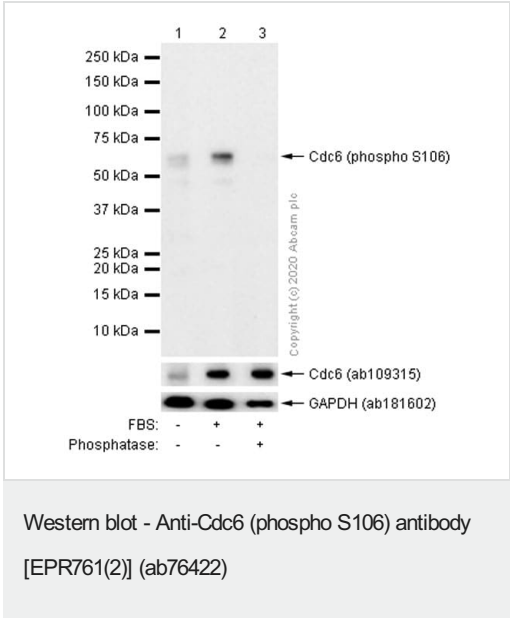
序列相似性

Belongs to the CDC6/cdc18 family.

细胞定位

Nucleus. Cytoplasm. The protein is nuclear in G1 and cytoplasmic in S-phase cells.

图片



All lanes : Anti-Cdc6 (phospho S106) antibody [EPR761(2)] (ab76422) at 1/1000 dilution (Purified)

Lane 1 : Raji (Human Burkitt's lymphoma B lymphocyte) starved for 24 hours whole cell lysate

Lane 2 : Raji (Human Burkitt's lymphoma B lymphocyte) starved for 24 hours then treated with 10%FBS for 24 hours whole cell lysate

Lane 3 : Raji (Human Burkitt's lymphoma B lymphocyte) starved for 24 hours then treated with 10%FBS for 24 hours whole cell lysate, then the membrane treated with Alkaline Phosphatase for 1 hour

Secondary

All lanes : Goat Anti-Rabbit IgG H&L (HRP) (**ab97051**) at 1/20000 dilution

Predicted band size: 63 kDa

Why choose a recombinant antibody?



Research with confidence
Consistent and reproducible results



Long-term and scalable supply
Recombinant technology



Success from the first experiment
Confirmed specificity



Ethical standards compliant
Animal-free production

Anti-Cdc6 (phospho S106) antibody [EPR761(2)]
(ab76422)

Please note: All products are "FOR RESEARCH USE ONLY. NOT FOR USE IN DIAGNOSTIC PROCEDURES"

Our Abpromise to you: Quality guaranteed and expert technical support

- Replacement or refund for products not performing as stated on the datasheet
- Valid for 12 months from date of delivery
- Response to your inquiry within 24 hours
- We provide support in Chinese, English, French, German, Japanese and Spanish
- Extensive multi-media technical resources to help you
- We investigate all quality concerns to ensure our products perform to the highest standards

If the product does not perform as described on this datasheet, we will offer a refund or replacement. For full details of the Abpromise, please visit <https://www.abcam.cn/abpromise> or contact our technical team.

Terms and conditions

- Guarantee only valid for products bought direct from Abcam or one of our authorized distributors