

### Anti-Cdc6 antibody [EPR714(2)] - BSA and Azide free ab211734

**重组** RabMAb

#### 6 图像

#### 概述

产品名称	Anti-Cdc6抗体[EPR714(2)] - BSA and Azide free
描述	兔单克隆抗体[EPR714(2)] to Cdc6 - BSA and Azide free
宿主	Rabbit
经测试应用	<b>适用于:</b> WB, IHC-P, ICC/IF <b>不适用于:</b> Flow Cyt (Intra) or IP
种属反应性	<b>与反应:</b> Human
免疫原	Synthetic peptide. This information is proprietary to Abcam and/or its suppliers.
阳性对照	WB: Hela treated with hydroxyurea and Raji treated with FBS lysates IHC-P: Human gastric adenocarcinoma and Human breast carcinoma tissue
常规说明	<p>ab211734 is the carrier-free version of <a href="#">ab109315</a>.</p> <p>Our <b>carrier-free</b> antibodies are typically supplied in a PBS-only formulation, purified and free of BSA, sodium azide and glycerol. The carrier-free buffer and high concentration allow for increased conjugation efficiency.</p> <p>This conjugation-ready format is designed for use with fluorochromes, metal isotopes, oligonucleotides, and enzymes, which makes them ideal for antibody labelling, functional and cell-based assays, flow-based assays (e.g. mass cytometry) and Multiplex Imaging applications.</p> <p>Use our <b>conjugation kits</b> for antibody conjugates that are ready-to-use in as little as 20 minutes with &lt;1 minute hands-on-time and 100% antibody recovery: available for fluorescent dyes, HRP, biotin and gold.</p> <p>This product is compatible with the Maxpar<sup>®</sup> Antibody Labeling Kit from Fluidigm, without the need for antibody preparation. Maxpar<sup>®</sup> is a trademark of Fluidigm Canada Inc.</p> <p>This product is a recombinant monoclonal antibody, which offers several advantages including:</p> <ul style="list-style-type: none"> <li>- High batch-to-batch consistency and reproducibility</li> <li>- Improved sensitivity and specificity</li> <li>- Long-term security of supply</li> <li>- Animal-free production</li> </ul> <p>For more information <a href="#">see here</a>.</p> <p>Our RabMAb<sup>®</sup> technology is a patented hybridoma-based technology for making rabbit monoclonal antibodies. For details on our patents, please refer to <a href="#">RabMAb<sup>®</sup> patents</a>.</p> <p>Mouse: We have preliminary internal testing data to indicate this antibody may not react with this</p>

species. Please contact us for more information.

## 性能

形式	Liquid
存放说明	Shipped at 4°C. Store at +4°C. Do Not Freeze.
存储溶液	pH: 7.20 Constituent: PBS
无载体	是
纯度	Protein A purified
克隆	单克隆
克隆编号	EPR714(2)
同种型	IgG

## 应用

**The Abpromise guarantee**      **Abpromise™** 承诺保证使用ab211734于以下的经测试应用

“应用说明”部分 下显示的仅为推荐的起始稀释度;实际最佳的稀释度/浓度应由使用者检定。

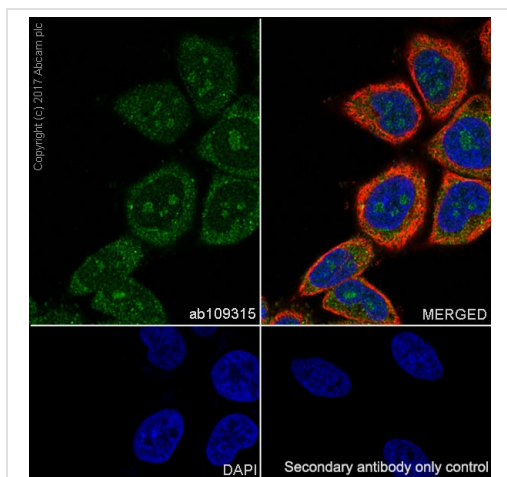
应用	Ab评论	说明
WB		Use at an assay dependent concentration. Detects a band of approximately 62 kDa (predicted molecular weight: 63 kDa).
IHC-P		Use at an assay dependent concentration. Perform heat mediated antigen retrieval with Tris/EDTA buffer pH 9.0 before commencing with IHC staining protocol. Perform antigen retrieval before commencing with IHC staining protocol.
ICC/IF		Use at an assay dependent concentration.

**应用说明**      Is unsuitable for Flow Cyt (Intra) or IP.

## 靶标

功能	Involved in the initiation of DNA replication. Also participates in checkpoint controls that ensure DNA replication is completed before mitosis is initiated.
序列相似性	Belongs to the CDC6/cdc18 family.
细胞定位	Nucleus. Cytoplasm. The protein is nuclear in G1 and cytoplasmic in S-phase cells.

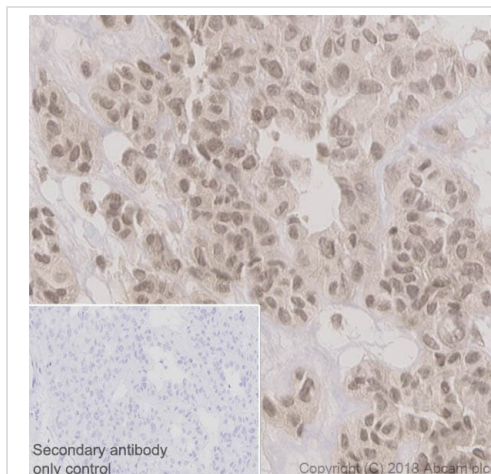
## 图片



Immunocytochemistry/ Immunofluorescence - Anti-Cdc6 antibody [EPR714(2)] - BSA and Azide free (ab211734)

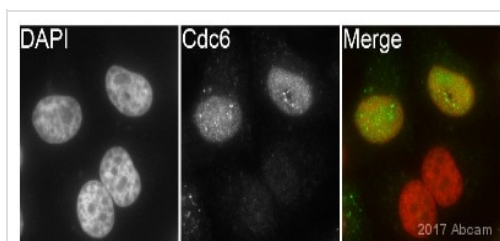
Immunocytochemistry/ Immunofluorescence analysis of HeLa (Human cervix adenocarcinoma epithelial cell) cells labeling Cdc6 with Purified **ab109315** at 1:100 dilution (9.4 µg/ml). Cells were fixed in 4% Paraformaldehyde and permeabilized with 0.1% tritonX-100. Cells were counterstained with Ab195889 Anti-alpha Tubulin antibody [DM1A] - Microtubule Marker (Alexa Fluor®594) 1:200 (2.5 µg/ml). Goat anti rabbit IgG (Alexa Fluor®488, **ab150077**) was used as the secondary antibody at 1:1000 (2 µg/ml) dilution. DAPI nuclear counterstain. PBS instead of the primary antibody was used as the secondary antibody only control.

This data was developed using the same antibody clone in a different buffer formulation containing PBS, BSA, glycerol, and sodium azide (**ab109315**).



Immunohistochemistry (Formalin/PFA-fixed paraffin-embedded sections) - Anti-Cdc6 antibody [EPR714(2)] - BSA and Azide free (ab211734)

Immunohistochemistry (Formalin/PFA-fixed paraffin-embedded sections) analysis of Human thyroid cancer tissue sections labeling Cdc6 with Purified **ab109315** at 1:90 dilution (10.4 µg/ml). Heat mediated antigen retrieval was performed using using **ab93684** (Tris/EDTA buffer, pH 9.0)ImmunoHistoProbe one step HRP Polymer (ready to use)was used as the secondary antibody.Negative control:PBS instead of the primary antibody.Hematoxylinwas used as a counterstain  
This data was developed using the same antibody clone in a different buffer formulation containing PBS, BSA, glycerol, and sodium azide (**ab109315**).

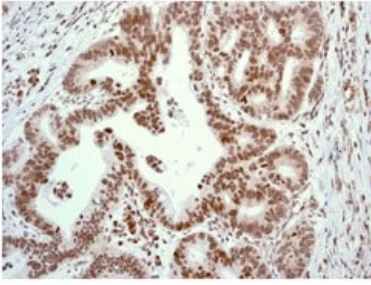


Immunocytochemistry/ Immunofluorescence - Anti-Cdc6 antibody [EPR714(2)] - BSA and Azide free (ab211734)

This image is courtesy of an Abreview submitted by Kirk McManus.

Unpurified **ab109315** staining Cdc6 in the Hela cell line from Human cervix by ICC/IF (Immunocytochemistry/immunofluorescence). Cells were fixed with paraformaldehyde, permeabilized with 0.5% Triton X-100. Samples were incubated with primary antibody (1/500 in PBS) for 1 hour at 22°C. Ab150081 (1/200) was used as the secondary antibody.

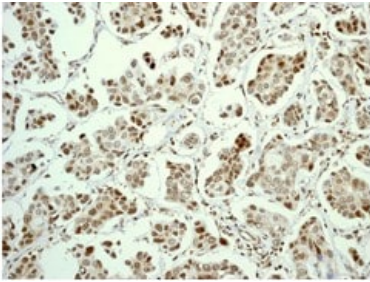
This data was developed using the same antibody clone in a different buffer formulation containing PBS, BSA, glycerol, and sodium azide (**ab109315**).



Immunohistochemistry (Formalin/PFA-fixed paraffin-embedded sections) - Anti-Cdc6 antibody [EPR714(2)] - BSA and Azide free (ab211734)

Immunohistochemical analysis of Cdc6 in paraffin embedded Human gastric adenocarcinoma tissue, using unpurified [ab109315](#) at a 1/1000 dilution.

This data was developed using the same antibody clone in a different buffer formulation containing PBS, BSA, glycerol, and sodium azide ([ab109315](#)).

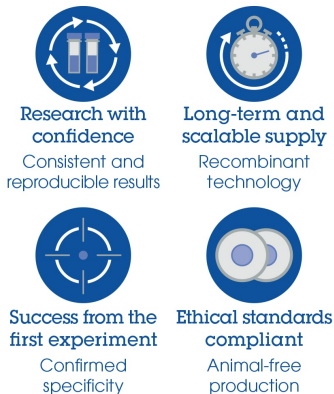


Immunohistochemistry (Formalin/PFA-fixed paraffin-embedded sections) - Anti-Cdc6 antibody [EPR714(2)] - BSA and Azide free (ab211734)

Immunohistochemical analysis of Cdc6 in paraffin embedded Human breast carcinoma tissue, using unpurified [ab109315](#) at a 1/1000 dilution.

This data was developed using the same antibody clone in a different buffer formulation containing PBS, BSA, glycerol, and sodium azide ([ab109315](#)).

#### Why choose a recombinant antibody?



Anti-Cdc6 antibody [EPR714(2)] - BSA and Azide free (ab211734)

**Please note:** All products are "FOR RESEARCH USE ONLY. NOT FOR USE IN DIAGNOSTIC PROCEDURES"

#### Our Abpromise to you: Quality guaranteed and expert technical support

- Replacement or refund for products not performing as stated on the datasheet

- Valid for 12 months from date of delivery
- Response to your inquiry within 24 hours
- We provide support in Chinese, English, French, German, Japanese and Spanish
- Extensive multi-media technical resources to help you
- We investigate all quality concerns to ensure our products perform to the highest standards

If the product does not perform as described on this datasheet, we will offer a refund or replacement. For full details of the Abpromise, please visit <https://www.abcam.cn/abpromise> or contact our technical team.

## **Terms and conditions**

---

- Guarantee only valid for products bought direct from Abcam or one of our authorized distributors