

Anti-Cdc6 antibody [EPR714(2)] ab109315

重组 RabMAb

★★★★★ **2 Abreviews** **16 References** **7 图像**

概述

产品名称	Anti-Cdc6抗体[EPR714(2)]
描述	兔单克隆抗体[EPR714(2)] to Cdc6
宿主	Rabbit
经测试应用	适用于: ICC/IF, WB, IHC-P 不适用于: Flow Cyt (Intra)
种属反应性	与反应: Human
免疫原	Synthetic peptide. This information is proprietary to Abcam and/or its suppliers.
阳性对照	WB: Hela, 293T, HCT116 treated with hydroxyurea and Raji treated with FBS lysates IHC-P: Human gastric adenocarcinoma, breast carcinoma, thyroid cancer tissue ICC/IF: HeLa
常规说明	This product is a recombinant monoclonal antibody, which offers several advantages including: <ul style="list-style-type: none"> - High batch-to-batch consistency and reproducibility - Improved sensitivity and specificity - Long-term security of supply - Animal-free production For more information see here . Our RabMAb [®] technology is a patented hybridoma-based technology for making rabbit monoclonal antibodies. For details on our patents, please refer to RabMAb[®] patents . Mouse: We have preliminary internal testing data to indicate this antibody may not react with this species. Please contact us for more information.

性能

形式	Liquid
存放说明	Shipped at 4°C. Store at +4°C short term (1-2 weeks). Upon delivery aliquot. Store at -20°C long term. Avoid freeze / thaw cycle.
存储溶液	pH: 7.20 Preservative: 0.01% Sodium azide Constituents: 59% PBS, 40% Glycerol (glycerin, glycerine), 0.5% BSA
纯度	Protein A purified

克隆	单克隆
克隆编号	EPR714(2)
同种型	IgG

应用

The Abpromise guarantee

Abpromise™承诺保证使用ab109315于以下的经测试应用

“应用说明”部分 下显示的仅为推荐的起始稀释度;实际最佳的稀释度/浓度应由使用者检定。

应用	Ab评论	说明
ICC/IF	★★★★★ (2)	1/100. For unpurified use at 1/250 - 1/500
WB		1/1000 - 1/10000. Detects a band of approximately 62 kDa (predicted molecular weight: 63 kDa).
IHC-P		1/90. Perform heat mediated antigen retrieval with Tris/EDTA buffer pH 9.0 before commencing with IHC staining protocol. See IHC antigen retrieval protocols .

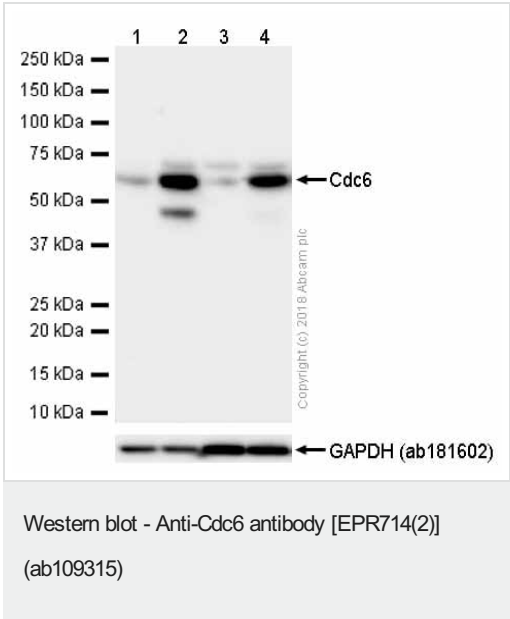
应用说明

Is unsuitable for Flow Cyt (Intra).

靶标

功能	Involved in the initiation of DNA replication. Also participates in checkpoint controls that ensure DNA replication is completed before mitosis is initiated.
序列相似性	Belongs to the CDC6/cdc18 family.
细胞定位	Nucleus. Cytoplasm. The protein is nuclear in G1 and cytoplasmic in S-phase cells.

图片



All lanes : Anti-Cdc6 antibody [EPR714(2)] (ab109315) at 0.5 µg/ml (purified)

Lane 1 : 293T (Human embryonic kidney epithelial cell) whole cell lysates

Lane 2 : 293T (Human embryonic kidney epithelial cell) treated with 20mM Hydroxyurea for 24 hours whole cell lysates

Lane 3 : HCT116 (Human colorectal carcinoma epithelial cell) whole cell lysates

Lane 4 : HCT116 (Human colorectal carcinoma epithelial cell) treated with 1mM Hydroxyurea for 16 hours whole cell lysates

Lysates/proteins at 15 µg per lane.

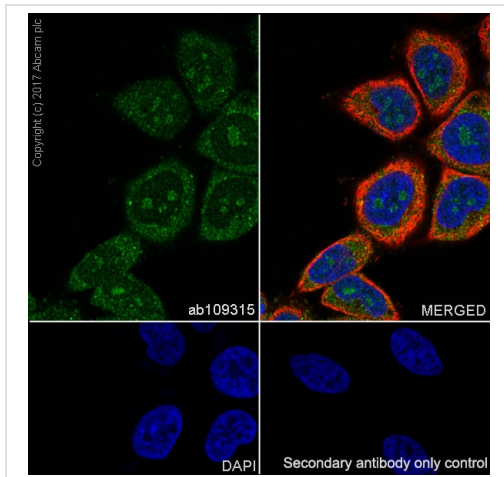
Secondary

All lanes : Goat Anti-Rabbit IgG H&L (HRP) (**ab97051**) at 1/20000 dilution

Predicted band size: 63 kDa

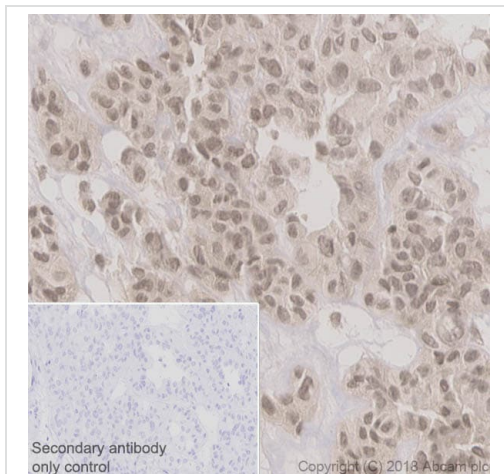
Blocking and diluting buffer: 5% NFDM/TBST.

Hydroxyurea induces Cdc6 expression (PMID:11346650)



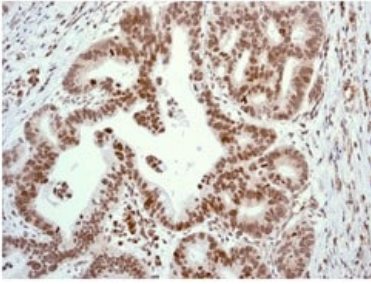
Immunocytochemistry/ Immunofluorescence - Anti-Cdc6 antibody [EPR714(2)] (ab109315)

Immunocytochemistry/ Immunofluorescence analysis of HeLa (Human cervix adenocarcinoma epithelial cell) cells labeling Cdc6 with Purified ab109315 at 1:100 dilution (9.4 µg/ml). Cells were fixed in 4% Paraformaldehyde and permeabilized with 0.1% tritonX-100. Cells were counterstained with Ab195889 Anti-alpha Tubulin antibody [DM1A] - Microtubule Marker (Alexa Fluor®594) 1:200 (2.5 µg/ml). Goat anti rabbit IgG (Alexa Fluor®488, **ab150077**) was used as the secondary antibody at 1:1000 (2 µg/ml) dilution. DAPI nuclear counterstain. PBS instead of the primary antibody was used as the secondary antibody only control.



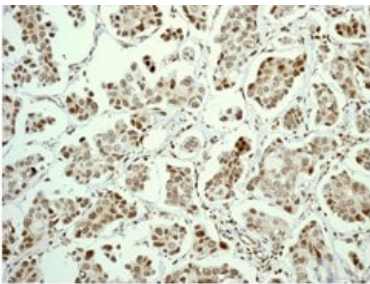
Immunohistochemistry (Formalin/PFA-fixed paraffin-embedded sections) - Anti-Cdc6 antibody [EPR714(2)] (ab109315)

Immunohistochemistry (Formalin/PFA-fixed paraffin-embedded sections) analysis of Human thyroid cancer tissue sections labeling Cdc6 with Purified ab109315 at 1:90 dilution (10.4 µg/ml). Heat mediated antigen retrieval was performed using using **ab93684** (Tris/EDTA buffer, pH 9.0)ImmunoHistoProbe one step HRP Polymer (ready to use)was used as the secondary antibody.Negative control:PBS instead of the primary antibody.Hematoxylinwas used as a counterstain



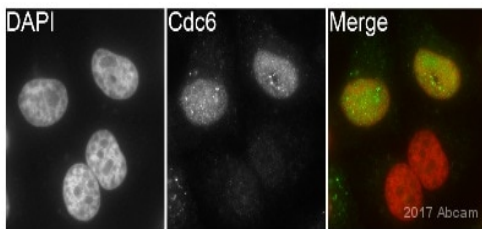
Immunohistochemistry (Formalin/PFA-fixed paraffin-embedded sections) - Anti-Cdc6 antibody [EPR714(2)] (ab109315)

Immunohistochemical analysis of Cdc6 in paraffin embedded Human gastric adenocarcinoma tissue, using unpurified ab109315 at a 1/1000 dilution.



Immunohistochemistry (Formalin/PFA-fixed paraffin-embedded sections) - Anti-Cdc6 antibody [EPR714(2)] (ab109315)

Immunohistochemical analysis of Cdc6 in paraffin embedded Human breast carcinoma tissue, using unpurified ab109315 at a 1/1000 dilution.






Immunocytochemistry/ Immunofluorescence - Anti-Cdc6 antibody [EPR714(2)] (ab109315)

This image is courtesy of an abreview by Kirk Mcmanus

Unpurified ab109315 staining Cdc6 in the HeLa cell line from Human cervix by ICC/IF (Immunocytochemistry/immunofluorescence). Cells were fixed with paraformaldehyde, permeabilized with 0.5% Triton X-100. Samples were incubated with primary antibody (1/500 in PBS) for 1 hour at 22°C. Ab150081 (1/200) was used as the secondary antibody.

Why choose a recombinant antibody?

 <p>Research with confidence Consistent and reproducible results</p>	 <p>Long-term and scalable supply Recombinant technology</p>
 <p>Success from the first experiment Confirmed specificity</p>	 <p>Ethical standards compliant Animal-free production</p>

Anti-Cdc6 antibody [EPR714(2)] (ab109315)

Please note: All products are "FOR RESEARCH USE ONLY. NOT FOR USE IN DIAGNOSTIC PROCEDURES"

Our Abpromise to you: Quality guaranteed and expert technical support

- Replacement or refund for products not performing as stated on the datasheet
- Valid for 12 months from date of delivery
- Response to your inquiry within 24 hours
- We provide support in Chinese, English, French, German, Japanese and Spanish
- Extensive multi-media technical resources to help you
- We investigate all quality concerns to ensure our products perform to the highest standards

If the product does not perform as described on this datasheet, we will offer a refund or replacement. For full details of the Abpromise, please visit <https://www.abcam.cn/abpromise> or contact our technical team.

Terms and conditions

- Guarantee only valid for products bought direct from Abcam or one of our authorized distributors