

Anti-CDC45L antibody [EPR5758] ab108350

重组 RabMAb

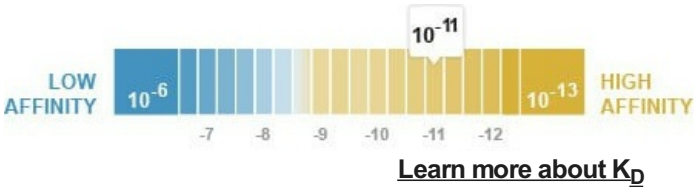
2 References 4 图像

概述

产品名称	Anti-CDC45L抗体[EPR5758]
描述	兔单克隆抗体[EPR5758] to CDC45L
宿主	Rabbit
经测试应用	适用于: WB, IHC-P 不适用于: IP
种属反应性	与反应: Human
免疫原	Synthetic peptide. This information is proprietary to Abcam and/or its suppliers.
阳性对照	HeLa, Jurkat, K562, and 293T cell lysates. Human kidney tissue
常规说明	<p>This product is a recombinant monoclonal antibody, which offers several advantages including:</p> <ul style="list-style-type: none"><li>- High batch-to-batch consistency and reproducibility</li><li>- Improved sensitivity and specificity</li><li>- Long-term security of supply</li><li>- Animal-free production</li></ul> <p>For more information <a href="#">see here</a>.</p> <p>Our RabMAb<sup>®</sup> technology is a patented hybridoma-based technology for making rabbit monoclonal antibodies. For details on our patents, please refer to <a href="#">RabMAb<sup>®</sup> patents</a>.</p> <p>Mouse, Rat: We have preliminary internal testing data to indicate this antibody may not react with these species. Please contact us for more information.</p>

性能

形式	Liquid
存放说明	Shipped at 4°C. Upon delivery aliquot and store at -20°C. Avoid freeze / thaw cycles.
解离常数 (K <sub>D</sub> )	K <sub>D</sub> = 3.17 x 10 <sup>-11</sup> M



存储溶液	pH: 7.20 Preservative: 0.05% Sodium azide Constituents: 0.1% BSA, 40% Glycerol (glycerin, glycerine), 9.85% Tris glycine, 50% Tissue culture supernatant
纯度	Tissue culture supernatant
克隆	单克隆
克隆编号	EPR5758
同种型	IgG

应用

The Abpromise guarantee

Abpromise™承诺保证使用ab108350于以下的经测试应用

“应用说明”部分 下显示的仅为推荐的起始稀释度;实际最佳的稀释度/浓度应由使用者检定。

应用	Ab评论	说明
WB		1/10000 - 1/50000. Detects a band of approximately 65 kDa (predicted molecular weight: 66 kDa).
IHC-P		1/50 - 1/100. Perform heat mediated antigen retrieval with citrate buffer pH 6 before commencing with IHC staining protocol. Perform antigen retrieval before commencing with IHC staining protocol

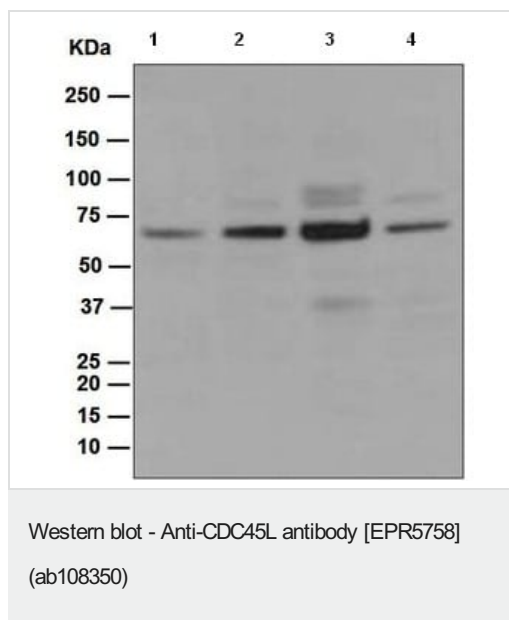
应用说明

Is unsuitable for IP.

靶标

功能	Required for initiation of chromosomal DNA replication.
组织特异性	Widely expressed, highest levels are found in adult testis and thymus and in fetal liver.
序列相似性	Belongs to the CDC45 family.
发展阶段	Transcript peaks at G1-S transition, but total protein remains constant throughout the cell cycle. Expressed in multiple tissues during embryogenesis, including neural crest-derived structures.
细胞定位	Cytoplasm. Nucleus.

图片



**All lanes :** Anti-CDC45L antibody [EPR5758] (ab108350) at 1/10000 dilution

**Lane 1 :** HeLa cell lysate

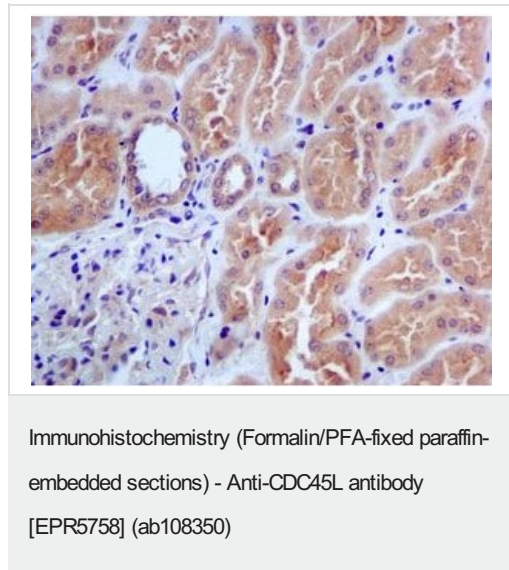
**Lane 2 :** Jurkat cell lysate

**Lane 3 :** K562 cell lysate

**Lane 4 :** 293T (Human embryonic kidney epithelial cell) cell lysate

Lysates/proteins at 10 µg per lane.

**Predicted band size:** 66 kDa



Immunohistochemical analysis of paraffin-embedded Human kidney tissue using ab108350 at 1/50

Perform heat mediated antigen retrieval with citrate buffer pH 6 before commencing with IHC staining protocol.

Ol-RD Scanning - Anti-CDC45L antibody [EPR5758] (ab108350)

Equilibrium disassociation constant ( $K_D$ )

Learn more about  $K_D$

[Click here to learn more about  \$K\_D\$](#)

### Why choose a recombinant antibody?



**Research with confidence**  
Consistent and reproducible results



**Long-term and scalable supply**  
Recombinant technology



**Success from the first experiment**  
Confirmed specificity



**Ethical standards compliant**  
Animal-free production

Anti-CDC45L antibody [EPR5758] (ab108350)

**Please note:** All products are "FOR RESEARCH USE ONLY. NOT FOR USE IN DIAGNOSTIC PROCEDURES"

### Our Abpromise to you: Quality guaranteed and expert technical support

---

- Replacement or refund for products not performing as stated on the datasheet
- Valid for 12 months from date of delivery
- Response to your inquiry within 24 hours
- We provide support in Chinese, English, French, German, Japanese and Spanish
- Extensive multi-media technical resources to help you
- We investigate all quality concerns to ensure our products perform to the highest standards

If the product does not perform as described on this datasheet, we will offer a refund or replacement. For full details of the Abpromise, please visit <https://www.abcam.cn/abpromise> or contact our technical team.

### Terms and conditions

---

- Guarantee only valid for products bought direct from Abcam or one of our authorized distributors