

# Anti-CDC42 binding protein kinase alpha antibody ab95886

## 1 图像

### 概述

<b>产品名称</b>	Anti-CDC42 binding蛋白kinase alpha抗体
<b>描述</b>	兔多克隆抗体to CDC42 binding蛋白kinase alpha
<b>宿主</b>	Rabbit
<b>经测试应用</b>	<b>适用于:</b> IP
<b>种属反应性</b>	<b>与反应:</b> Human <b>预测可用于:</b> Mouse, Rat, Rabbit, Horse, Guinea pig, Cow, Dog, Pig, Rhesus monkey, Gorilla, Orangutan, Elephant 
<b>免疫原</b>	Synthetic peptide, corresponding to a region between residues 1610 and 1660 of Human CDC42 binding protein kinase alpha (CAH71185.1).
<b>阳性对照</b>	HeLa whole cell lysate.
<b>常规说明</b>	<p>The Life Science industry has been in the grips of a reproducibility crisis for a number of years. Abcam is leading the way in addressing this with our range of recombinant monoclonal antibodies and knockout edited cell lines for gold-standard validation. Please check that this product meets your needs before purchasing.</p> <p>If you have any questions, special requirements or concerns, please send us an inquiry and/or contact our Support team ahead of purchase. Recommended alternatives for this product can be found below, along with publications, customer reviews and Q&amp;As</p>

### 性能

<b>形式</b>	Liquid
<b>存放说明</b>	Shipped at 4°C. Upon delivery aliquot and store at -20°C. Avoid freeze / thaw cycles.
<b>存储溶液</b>	pH: 7 Preservative: 0.09% Sodium azide Constituent: Tris citrate/phosphate
<b>纯度</b>	Immunogen affinity purified
<b>纯化说明</b>	ab95886 was affinity purified using an epitope specific to CDC42 binding protein kinase alpha immobilized on solid support.
<b>克隆</b>	多克隆
<b>同种型</b>	IgG

## 应用

**The Abpromise guarantee**      **Abpromise™**承诺保证使用ab95886于以下的经测试应用

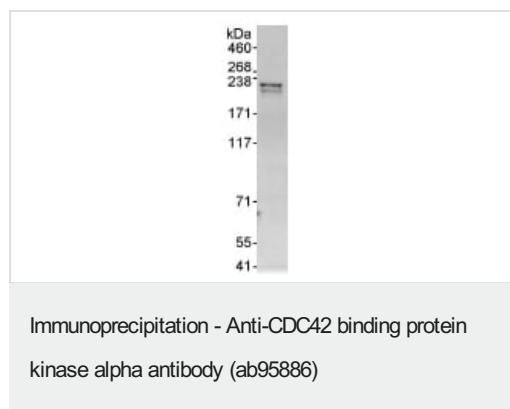
“应用说明”部分 下显示的仅为推荐的起始稀释度;实际最佳的稀释度/浓度应由使用者检定。

应用	Ab评论	说明
IP		Use at 2-5 µg/mg of lysate.

## 靶标

<b>功能</b>	May act as a downstream effector of CDC42 in cytoskeletal reorganization. Contributes to the actomyosin contractility required for cell invasion, through the regulation of MYPT1 and thus MLC2 phosphorylation.
<b>组织特异性</b>	Abundant in the heart, brain, skeletal muscle, kidney, and pancreas, with little or no expression in the lung and liver.
<b>序列相似性</b>	Belongs to the protein kinase superfamily. AGC Ser/Thr protein kinase family. DMPK subfamily. Contains 1 AGC-kinase C-terminal domain. Contains 1 CNH domain. Contains 1 CRIB domain. Contains 1 PH domain. Contains 1 phorbol-ester/DAG-type zinc finger. Contains 1 protein kinase domain.
<b>细胞定位</b>	Cytoplasm. Displays a dispersed punctate distribution and concentrates along the cell periphery, especially at the leading edge and cell-cell junction. This concentration is PH-domain dependent.

## 图片



Detection of CDC42 binding protein kinase alpha by Western Blot of Immunoprecipitate.

An other antibody at 1µg/ml staining CDC42 binding protein kinase alpha in HeLa whole cell lysate immunoprecipitated using ab95886 at 3µg/mg lysate (1 mg/IP; 20% of IP loaded/lane).

Detection: Chemiluminescence with exposure time of 10 seconds.

**Please note:** All products are "FOR RESEARCH USE ONLY. NOT FOR USE IN DIAGNOSTIC PROCEDURES"

## Our Abpromise to you: Quality guaranteed and expert technical support

- Replacement or refund for products not performing as stated on the datasheet
- Valid for 12 months from date of delivery

- Response to your inquiry within 24 hours
- We provide support in Chinese, English, French, German, Japanese and Spanish
- Extensive multi-media technical resources to help you
- We investigate all quality concerns to ensure our products perform to the highest standards

If the product does not perform as described on this datasheet, we will offer a refund or replacement. For full details of the Abpromise, please visit <https://www.abcam.cn/abpromise> or contact our technical team.

### **Terms and conditions**

---

- Guarantee only valid for products bought direct from Abcam or one of our authorized distributors