

Anti-Cdc37 antibody ab115166

★★★★★ [1 Abreviews](#) [2 图像](#)

概述

产品名称	Anti-Cdc37抗体
描述	兔多克隆抗体to Cdc37
宿主	Rabbit
经测试应用	适用于: WB, IP
种属反应性	与反应: Mouse, Human 预测可用于: Rat, Rabbit, Horse, Chicken, Guinea pig, Cow, Dog, Pig, Xenopus laevis, Chimpanzee, Rhesus monkey, Gorilla, Orangutan, Xenopus tropicalis 
免疫原	Synthetic peptide within Human Cdc37 aa 1-50. The exact sequence is proprietary. Database link: Q16543
阳性对照	Hela, 293T and mpuse NIH3T3 cell lysates.
常规说明	<p>The Life Science industry has been in the grips of a reproducibility crisis for a number of years. Abcam is leading the way in addressing this with our range of recombinant monoclonal antibodies and knockout edited cell lines for gold-standard validation. Please check that this product meets your needs before purchasing.</p> <p>If you have any questions, special requirements or concerns, please send us an inquiry and/or contact our Support team ahead of purchase. Recommended alternatives for this product can be found below, along with publications, customer reviews and Q&As</p>

性能

形式	Liquid
存放说明	Shipped at 4°C. Upon delivery aliquot and store at -20°C. Avoid freeze / thaw cycles.
存储溶液	pH: 7 Preservative: 0.09% Sodium azide Constituent: 99% Tris citrate/phosphate
纯度	pH 7 to 8. Immunogen affinity purified
克隆	多克隆
同种型	IgG

应用

The Abpromise guarantee

Abpromise™承诺保证使用ab115166于以下的经测试应用

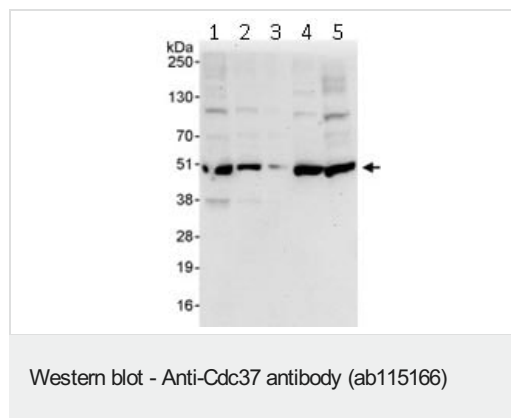
“应用说明”部分 下显示的仅为推荐的起始稀释度;实际最佳的稀释度/浓度应由使用者检定。

应用	Ab评论	说明
WB		1/1000 - 1/5000. Predicted molecular weight: 44 kDa.
IP		Use at 2-5 µg/mg of lysate.

靶标

功能	Co-chaperone that binds to numerous kinases and promotes their interaction with the Hsp90 complex, resulting in stabilization and promotion of their activity.
序列相似性	Belongs to the CDC37 family.
翻译后修饰	Constitutively sumoylated by UBE2I.
细胞定位	Cytoplasm.

图片



All lanes : Anti-Cdc37 antibody (ab115166) at 0.4 µg/ml

Lane 1 : HeLa cell lysate at 50 µg

Lane 2 : HeLa cell lysate at 15 µg

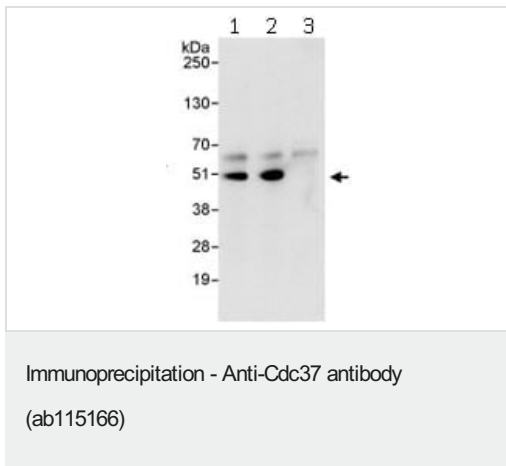
Lane 3 : HeLa cell lysate at 5 µg

Lane 4 : 293T cell lysate at 50 µg

Lane 5 : Mouse NIH3T3 cell lysate at 50 µg

Predicted band size: 44 kDa

Exposure time: 30 seconds



Immunoprecipitation of Cdc37 (3 μ g of antibody per mg of HeLa cell lysate; 20% of the IP loaded). Lane 1- Immunoprecipitation with anti-Cdc37 antibody (ab115166); Lane 2-Immunoprecipitation with an anti-Cdc37 antibody that recognizes an downstream epitope ; Lane 3- Immunoprecipitation with IgG control. Anti-Cdc37 antibody (ab115166) used at 1 μ g/ml for western blot. Detection: Chemiluminescence with exposure time of 10 sec.

Please note: All products are "FOR RESEARCH USE ONLY. NOT FOR USE IN DIAGNOSTIC PROCEDURES"

Our Abpromise to you: Quality guaranteed and expert technical support

- Replacement or refund for products not performing as stated on the datasheet
- Valid for 12 months from date of delivery
- Response to your inquiry within 24 hours
- We provide support in Chinese, English, French, German, Japanese and Spanish
- Extensive multi-media technical resources to help you
- We investigate all quality concerns to ensure our products perform to the highest standards

If the product does not perform as described on this datasheet, we will offer a refund or replacement. For full details of the Abpromise, please visit <https://www.abcam.cn/abpromise> or contact our technical team.

Terms and conditions

- Guarantee only valid for products bought direct from Abcam or one of our authorized distributors