


Anti-Cdc25A antibody ab989

★★★★★ [1 Abreviews](#) [11 References](#) [2 图像](#)

概述

产品名称	Anti-Cdc25A抗体
描述	兔多克隆抗体to Cdc25A
宿主	Rabbit
经测试应用	适用于: IP, WB
种属反应性	与反应: Human 预测可用于: Chimpanzee, Orangutan 
免疫原	Synthetic peptide (Human) conjugated to KLH - which represented a portion of human Cell Division Cycle 25a encoded by exon 7 (LocusLink ID 993).
阳性对照	WB: HeLa and HEK-293T whole cell lysates. IP: HEK-293T whole cell lysate.
常规说明	<p>The Life Science industry has been in the grips of a reproducibility crisis for a number of years. Abcam is leading the way in addressing this with our range of recombinant monoclonal antibodies and knockout edited cell lines for gold-standard validation. Please check that this product meets your needs before purchasing.</p> <p>If you have any questions, special requirements or concerns, please send us an inquiry and/or contact our Support team ahead of purchase. Recommended alternatives for this product can be found below, along with publications, customer reviews and Q&As</p>

性能

形式	Liquid
存放说明	Shipped at 4°C. Upon delivery aliquot and store at -20°C. Avoid freeze / thaw cycles.
存储溶液	<p>pH: 7</p> <p>Preservative: 0.1% Sodium azide</p> <p>Constituents: 0.021% PBS, 1.764% Sodium citrate, 1.815% Tris</p>
纯度	Immunogen affinity purified
克隆	多克隆
同种型	IgG

应用

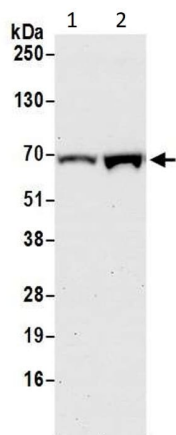
“应用说明”部分 下显示的仅为推荐的起始稀释度;实际最佳的稀释度/浓度应由使用者检定。

应用	Ab评论	说明
IP		Use at 2-10 µg/mg of lysate.
WB	★★★★★ (1)	1/1000 - 1/10000. Detects a band of approximately 65 kDa (predicted molecular weight: 59 kDa).

靶标

功能	Tyrosine protein phosphatase which functions as a dosage-dependent inducer of mitotic progression. Directly dephosphorylates CDK1 and stimulates its kinase activity. Also dephosphorylates CDK2 in complex with cyclin E, in vitro.
序列相似性	Belongs to the MPI phosphatase family. Contains 1 rhodanese domain.
结构域	The phosphodegron motif mediates interaction with specific F-box proteins when phosphorylated. Putative phosphorylation sites at Ser-79 and Ser-82 appear to be essential for this interaction.
翻译后修饰	Phosphorylated by CHEK1 on Ser-76, Ser-124, Ser-178, Ser-279, Ser-293 and Thr-507 during checkpoint mediated cell cycle arrest. Also phosphorylated by CHEK2 on Ser-124, Ser-279, and Ser-293 during checkpoint mediated cell cycle arrest. Phosphorylation on Ser-178 and Thr-507 creates binding sites for YWHAE/14-3-3 epsilon which inhibits CDC25A. Phosphorylation on Ser-76, Ser-124, Ser-178, Ser-279 and Ser-293 may also promote ubiquitin-dependent proteolysis of CDC25A by the SCF complex. Phosphorylation of CDC25A at Ser-76 by CHEK1 primes it for subsequent phosphorylation at Ser-79, Ser-82 and Ser-88 by NEK11. Phosphorylation by NEK11 is required for BTRC-mediated polyubiquitination and degradation. Phosphorylation by PIM1 leads to an increase in phosphatase activity. Phosphorylated by PLK3 following DNA damage, leading to promote its ubiquitination and degradation. Ubiquitinated by the anaphase promoting complex/cyclosome (APC/C) ubiquitin ligase complex that contains FZR1/CDH1 during G1 phase leading to its degradation by the proteasome. Ubiquitinated by a SCF complex containing BTRC and FBXW11 during S phase leading to its degradation by the proteasome. Deubiquitination by USP17L2/DUB3 leads to its stabilization.

图片



Western blot - Anti-Cdc25A antibody (ab989)

All lanes : Anti-Cdc25A antibody (ab989) at 1 µg/ml

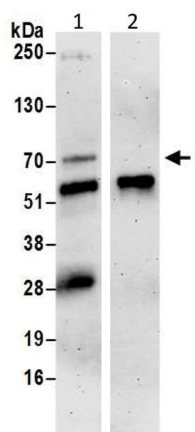
Lane 1 : HeLa (Human cervix adenocarcinoma epithelial cell) whole cell lysate

Lane 2 : HEK-293T (Human epithelial cell line from embryonic kidney transformed with large T antigen) whole cell lysate

Lysates/proteins at 50 µg per lane.

Predicted band size: 59 kDa

Exposure time: 3 minutes



Immunoprecipitation - Anti-Cdc25A antibody (ab989)

Cdc25A was immunoprecipitated from HEK-293T (Human epithelial cell line from embryonic kidney transformed with large T antigen) whole cell lysate (0.5 or 1 mg for IP, 20% of IP loaded) with ab989 at 6 µg/mg lysate. Western blot was performed from the immunoprecipitate using ab989 at 1 µg/ml.

Lane 1: ab989 IP in HEK-293T whole cell lysate.

Lane 2: Control IgG IP in HEK-293T whole cell lysate.

Please note: All products are "FOR RESEARCH USE ONLY. NOT FOR USE IN DIAGNOSTIC PROCEDURES"

Our Abpromise to you: Quality guaranteed and expert technical support

- Replacement or refund for products not performing as stated on the datasheet

- Valid for 12 months from date of delivery
- Response to your inquiry within 24 hours
- We provide support in Chinese, English, French, German, Japanese and Spanish
- Extensive multi-media technical resources to help you
- We investigate all quality concerns to ensure our products perform to the highest standards

If the product does not perform as described on this datasheet, we will offer a refund or replacement. For full details of the Abpromise, please visit <https://www.abcam.cn/abpromise> or contact our technical team.

Terms and conditions

- Guarantee only valid for products bought direct from Abcam or one of our authorized distributors