


Anti-CDC25 antibody [EPR1790(2)] ab111830

重组 RabMAb

2 References 2 图像

概述

产品名称	Anti-CDC25抗体[EPR1790(2)]
描述	兔单克隆抗体[EPR1790(2)] to CDC25
宿主	Rabbit
特异性	This antibody detects the band of interest in tissue lysates, but it did not detect the protein in cell lysate.
经测试应用	适用于: WB 不适用于: Flow Cyt, ICC/IF, IHC-P or IP
种属反应性	与反应: Human 预测可用于: Rat 
免疫原	Synthetic peptide. This information is proprietary to Abcam and/or its suppliers.
阳性对照	Human hippocampus, hypothalamus, and midbrain lysates.
常规说明	<p>This product is a recombinant monoclonal antibody, which offers several advantages including:</p> <ul style="list-style-type: none"> - High batch-to-batch consistency and reproducibility - Improved sensitivity and specificity - Long-term security of supply - Animal-free production <p>For more information see here.</p> <p>Our RabMAb[®] technology is a patented hybridoma-based technology for making rabbit monoclonal antibodies. For details on our patents, please refer to RabMAb[®] patents.</p> <p>Mouse: We have preliminary internal testing data to indicate this antibody may not react with this species. Please contact us for more information.</p>

性能

形式	Liquid
存放说明	Shipped at 4°C. Store at -20°C. Stable for 12 months at -20°C.
存储溶液	pH: 7.20 Preservative: 0.05% Sodium azide Constituents: 0.1% BSA, 40% Glycerol (glycerin, glycerine), 9.85% Tris glycine, 50% Tissue

	culture supernatant
纯度	Protein A purified
克隆	单克隆
克隆编号	EPR1790(2)
同种型	IgG

应用

The Abpromise guarantee
Abpromise™承诺保证使用ab111830于以下的经测试应用

“应用说明”部分 下显示的仅为推荐的起始稀释度;实际最佳的稀释度/浓度应由使用者检定。

应用	Ab评论	说明
WB		1/1000 - 1/10000. Predicted molecular weight: 145 kDa.

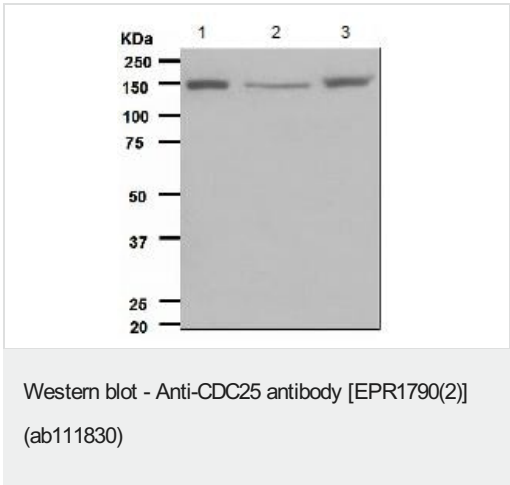
应用说明

Is unsuitable for Flow Cyt,ICC/IF,IHC-P or IP.

靶标

功能	Promotes the exchange of Ras-bound GDP by GTP.
序列相似性	Contains 1 DH (DBL-homology) domain. Contains 1 IQ domain. Contains 1 N-terminal Ras-GEF domain. Contains 2 PH domains. Contains 1 Ras-GEF domain.
结构域	The DH (DBL-homology) domain mediates interaction with RASGRF2.
翻译后修饰	Ubiquitinated.

图片



All lanes : Anti-CDC25 antibody [EPR1790(2)] (ab111830) at 1/1000 dilution

Lane 1 : Human hippocampus lysate
Lane 2 : Human hypothalamus lysate
Lane 3 : Human midbrain lysate

Lysates/proteins at 10 µg per lane.

Predicted band size: 145 kDa

Why choose a recombinant antibody?



Research with confidence
Consistent and reproducible results



Long-term and scalable supply
Recombinant technology



Success from the first experiment
Confirmed specificity



Ethical standards compliant
Animal-free production

Anti-CDC25 antibody [EPR1790(2)] (ab111830)

Please note: All products are "FOR RESEARCH USE ONLY. NOT FOR USE IN DIAGNOSTIC PROCEDURES"

Our Abpromise to you: Quality guaranteed and expert technical support

- Replacement or refund for products not performing as stated on the datasheet
- Valid for 12 months from date of delivery
- Response to your inquiry within 24 hours
- We provide support in Chinese, English, French, German, Japanese and Spanish
- Extensive multi-media technical resources to help you
- We investigate all quality concerns to ensure our products perform to the highest standards

If the product does not perform as described on this datasheet, we will offer a refund or replacement. For full details of the Abpromise, please visit <https://www.abcam.cn/abpromise> or contact our technical team.

Terms and conditions

- Guarantee only valid for products bought direct from Abcam or one of our authorized distributors