

Anti-CD80 antibody ab64116

★☆☆☆☆ [1 Abreviews](#) [8 References](#) [1 图像](#)

概述

产品名称	Anti-CD80抗体
描述	兔多克隆抗体to CD80
宿主	Rabbit
经测试应用	适用于: IHC-P
种属反应性	与反应: Mouse
免疫原	Synthetic peptide conjugated to KLH derived from within residues 1 - 100 of Mouse CD80.参阅 Abcam的专有抗源政策(Peptide available as ab66476 .)
阳性对照	This antibody gave a positive signal in the following lysates: Mouse Lymph node
常规说明	<p>The Life Science industry has been in the grips of a reproducibility crisis for a number of years. Abcam is leading the way in addressing this with our range of recombinant monoclonal antibodies and knockout edited cell lines for gold-standard validation. Please check that this product meets your needs before purchasing.</p> <p>If you have any questions, special requirements or concerns, please send us an inquiry and/or contact our Support team ahead of purchase. Recommended alternatives for this product can be found below, along with publications, customer reviews and Q&As</p>

性能

形式	Liquid
存放说明	Shipped at 4°C. Store at +4°C short term (1-2 weeks). Upon delivery aliquot. Store at -20°C or -80°C. Avoid freeze / thaw cycle.
存储溶液	pH: 7.40 Preservative: 0.02% Sodium azide Constituent: PBS
纯度	Batches of this product that have a concentration < 1mg/ml may have BSA added as a stabilising agent. If you would like information about the formulation of a specific lot, please contact our scientific support team who will be happy to help.
克隆	免疫亲和纯化
同种型	多克隆 IgG

应用

The Abpromise guarantee **Abpromise™**承诺保证使用ab641116于以下的经测试应用

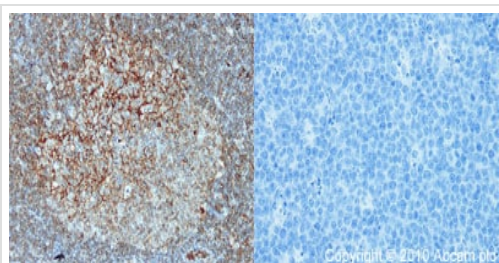
“应用说明”部分 下显示的仅为推荐的起始稀释度;实际最佳的稀释度/浓度应由使用者检定。

应用	Ab评论	说明
IHC-P		1/40. Perform heat mediated antigen retrieval before commencing with IHC staining protocol.

靶标

功能	Involved in the costimulatory signal essential for T-lymphocyte activation. T-cell proliferation and cytokine production is induced by the binding of CD28 or CTLA-4 to this receptor.
组织特异性	Expressed on activated B-cells, macrophages and dendritic cells.
序列相似性	Contains 1 Ig-like C2-type (immunoglobulin-like) domain. Contains 1 Ig-like V-type (immunoglobulin-like) domain.
细胞定位	Membrane.

图片



Immunohistochemistry (Formalin/PFA-fixed paraffin-embedded sections) - Anti-CD80 antibody (ab641116)

ab641116 (1:40) staining CD80 in paraffin-embedded mouse lymph node tissue (left panel) using an automated system (Ventana Discovery). Right-hand panel shows negative control (no primary antibody).

Using this protocol there is strong membrane staining, of activated B cells in the germinal centres. What appear to be scattered activated B cells or possibly plasma cells in the interfollicular areas of the lymph node and blood vessels.

Sections were rehydrated and antigen retrieved in CC1 Cell Conditioning Buffer using Ventana Extended Retrieval programme. Slides were blocked in 3% H₂O₂ / 4 min / 37°C and incubated with ab641116 (1:40 dilution / 1 hour / 37°C). Sections then blocked (4mins / 37°C) and incubated with Dako swine anti-rabbit antibody (1:50, 28 min / 37°C). Staining was amplified and detected by incubation with Ventana Streptavidin ABC system (16 min / 37°C) and Ventana DAB map reagent (8

Please note: All products are "FOR RESEARCH USE ONLY. NOT FOR USE IN DIAGNOSTIC PROCEDURES"

Our Abpromise to you: Quality guaranteed and expert technical support

- Replacement or refund for products not performing as stated on the datasheet
- Valid for 12 months from date of delivery
- Response to your inquiry within 24 hours

- We provide support in Chinese, English, French, German, Japanese and Spanish
- Extensive multi-media technical resources to help you
- We investigate all quality concerns to ensure our products perform to the highest standards

If the product does not perform as described on this datasheet, we will offer a refund or replacement. For full details of the Abpromise, please visit <https://www.abcam.cn/abpromise> or contact our technical team.

Terms and conditions

- Guarantee only valid for products bought direct from Abcam or one of our authorized distributors