




### Anti-CD73 antibody [4G6E3] ab202122

敲除 验证

★★★★★ 1 Abreviews 10 References 7 图像

#### 概述

产品名称	Anti-CD73抗体[4G6E3]
描述	小鼠单克隆抗体[4G6E3] to CD73
宿主	Mouse
经测试应用	适用于: Flow Cyt, IHC-P, WB
种属反应性	与反应: Human 预测可用于: Mouse, Rat, Cow 
免疫原	Recombinant fragment corresponding to Human CD73 aa 1-250. Expressed in E. Coli. Database link: <a href="#">P21589</a>  <a href="#">Run BLAST with</a>  <a href="#">Run BLAST with</a>
阳性对照	Flow Cytometry: A431 cells; WB: A375, and A431 cell lysates; IHC-P: Human endometrial cancer and Human esophageal cancer tissues.
常规说明	<p>This product was changed from ascites to supernatant. Lot no's high than GR287343-13 are from Tissue Culture Supernatant</p> <p>The Life Science industry has been in the grips of a reproducibility crisis for a number of years. Abcam is leading the way in addressing this with our range of recombinant monoclonal antibodies and knockout edited cell lines for gold-standard validation. Please check that this product meets your needs before purchasing.</p> <p>If you have any questions, special requirements or concerns, please send us an inquiry and/or contact our Support team ahead of purchase. Recommended alternatives for this product can be found below, along with publications, customer reviews and Q&amp;As</p>

#### 性能

形式	Liquid
存放说明	Shipped at 4°C. Store at +4°C short term (1-2 weeks). Upon delivery aliquot. Store at -20°C long term. Avoid freeze / thaw cycle.
存储溶液	Preservative: 0.05% Sodium azide Constituent: 99% PBS
纯度	Protein G purified

纯化说明	Purified from tissue culture supernatant.
克隆	单克隆
克隆编号	4G6E3
同种型	IgG1

应用

The Abpromise guarantee      **Abpromise™**承诺保证使用ab202122于以下的经测试应用

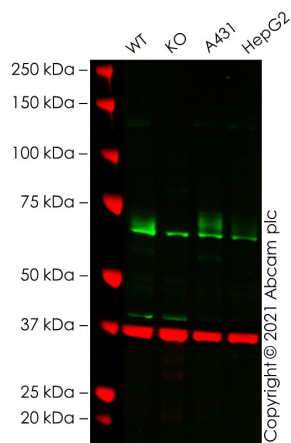
“应用说明”部分 下显示的仅为推荐的起始稀释度;实际最佳的稀释度/浓度应由使用者检定。

应用	Ab评论	说明
Flow Cyt		1/200 - 1/400. <b>ab170190</b> - Mouse monoclonal IgG1, is suitable for use as an isotype control with this antibody.
IHC-P	★★★★★ (1)	1/200 - 1/1000.
WB		1/500 - 1/2000.

靶标

功能	Hydrolyzes extracellular nucleotides into membrane permeable nucleosides.
疾病相关	Defects in NT5E are the cause of calcification of joints and arteries (CAJA) [MIM:211800]. A condition characterized by adult-onset calcification of the lower extremity arteries, including the iliac, femoral and tibial arteries, and hand and foot capsule joints. Age of onset has been reported as early as the second decade of life, usually involving intense joint pain or calcification in the hands.
序列相似性	Belongs to the 5'-nucleotidase family.
细胞定位	Cell membrane.

图片



Western blot - Anti-CD73 antibody [4G6E3]  
(ab202122)

**All lanes :** Anti-CD73 antibody [4G6E3] (ab202122) at 1/500 dilution

**Lane 1 :** Wild-type A-375 cell lysate

**Lane 2 :** NT5E knockout A-375 cell lysate

**Lane 3 :** A431 cell lysate

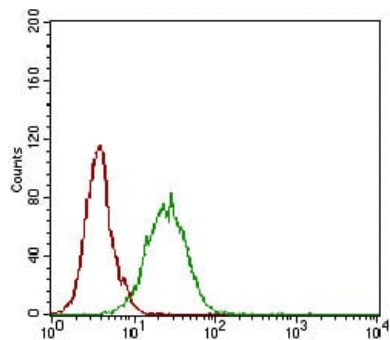
**Lane 4 :** HepG2 cell lysate

Lysates/proteins at 20 µg per lane.

Performed under reducing conditions.

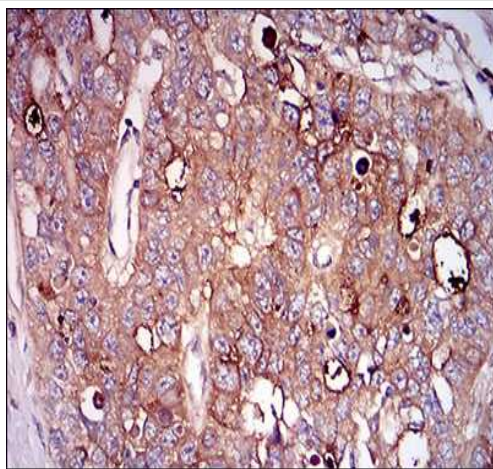
**Observed band size:** 65 kDa

False colour image of Western blot: Anti-CD73 antibody [4G6E3] staining at 1/500 dilution, shown in green; Rabbit Anti-GAPDH antibody [EPR16891] ([ab181602](#)) loading control staining at 1/20000 dilution, shown in red. In Western blot, ab202122 was shown to bind specifically to CD73. A band was observed at 65-70 kDa in wild-type A-375 cell lysates with no signal observed at this size in NT5E knockout cell line [ab281591](#) (knockout cell lysate [ab282943](#)). A cross-reactive band is observed at 65 kDa in all samples. To generate this image, wild-type and NT5E knockout A-375 cell lysates were analysed. First, samples were run on an SDS-PAGE gel then transferred onto a nitrocellulose membrane. Membranes were blocked in 3 % milk in TBS-0.1 % Tween<sup>®</sup> 20 (TBS-T) before incubation with primary antibodies overnight at 4 °C. Blots were washed four times in TBS-T, incubated with secondary antibodies for 1 h at room temperature, washed again four times then imaged. Secondary antibodies used were Goat anti-Mouse IgG H&L (IRDye<sup>®</sup> 800CW) preabsorbed ([ab216772](#)) and Goat anti-Rabbit IgG H&L (IRDye<sup>®</sup> 680RD) preabsorbed ([ab216777](#)) at 1/20000 dilution.



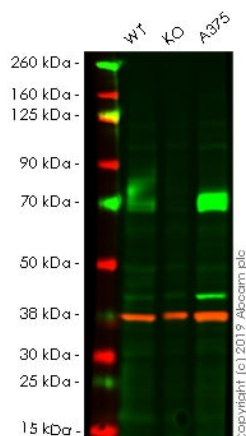
Flow Cytometry - Anti-CD73 antibody [4G6E3]  
(ab202122)

Flow cytometric analysis of A431 cells using ab202122 at 1/200 (green) and negative control (red).



Immunohistochemistry (Formalin/PFA-fixed paraffin-embedded sections) - Anti-CD73 antibody [4G6E3]  
(ab202122)

Immunohistochemical analysis of paraffin-embedded Human esophageal cancer tissue labeling CD73 with ab202122 at 1/200 with DAB staining.



Western blot - Anti-CD73 antibody [4G6E3]  
(ab202122)

**All lanes** : Anti-CD73 antibody [4G6E3] (ab202122) at 1/1000 dilution

**Lane 1** : Wild-type A-431 whole cell lysate

**Lane 2** : NT5E knockout A-431 (Human epidermoid carcinoma cell line) whole cell lysate

**Lane 3** : A375 (Human malignant melanoma cell line) whole cell lysate

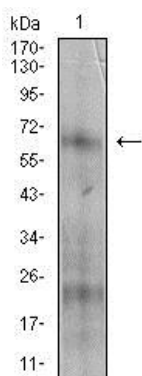
Lysates/proteins at 20 µg per lane.

Performed under reducing conditions.

**Lanes 1 - 3**: Merged signal (red and green). Green - ab202122 observed at 63 kDa. Red - loading control, **ab181602**, observed at

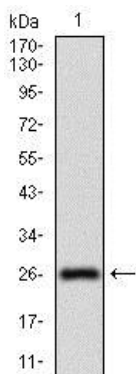
37 kDa.

ab202122 was shown to recognize NT5E in wild-type A-431 cells as signal was lost at the expected MW in NT5E knockout cells. Additional cross-reactive bands were observed in the wild-type and knockout cells. Wild-type and NT5E knockout samples were subjected to SDS-PAGE. Ab202122 and **ab181602** (Rabbit anti-GAPDH loading control) were incubated overnight at 4°C at 1/1000 dilution and 1/20000 dilution respectively. Blots were developed with Goat anti-Mouse IgG H&L (IRDye® 800CW) preabsorbed **ab216772** and Goat anti-Rabbit IgG H&L (IRDye® 680RD) preabsorbed **ab216777** secondary antibodies at 1/20000 dilution for 1 hour at room temperature before imaging.



Western blot - Anti-CD73 antibody [4G6E3]  
(ab202122)

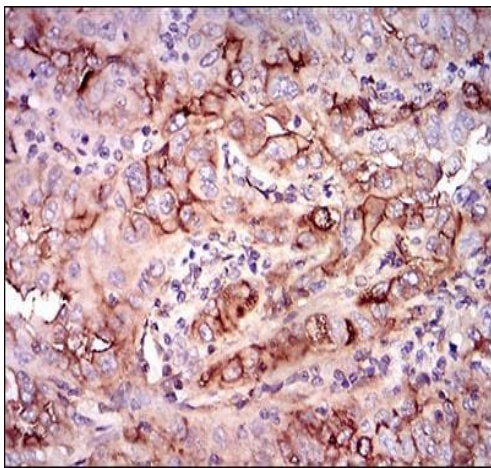
Anti-CD73 antibody [4G6E3] (ab202122) at 1/500 dilution + A431 cell lysate



Western blot - Anti-CD73 antibody [4G6E3]  
(ab202122)

Anti-CD73 antibody [4G6E3] (ab202122) at 1/500 dilution + Human CD73 (AA: 30-250) recombinant protein

Expected MW is 26.6 kDa



Immunohistochemistry (Formalin/PFA-fixed paraffin-embedded sections) - Anti-CD73 antibody [4G6E3] (ab202122)

Immunohistochemical analysis of paraffin-embedded Human endometrial cancer tissue labeling CD73 with ab202122 at 1/200 with DAB staining.

**Please note:** All products are "FOR RESEARCH USE ONLY. NOT FOR USE IN DIAGNOSTIC PROCEDURES"

### Our Abpromise to you: Quality guaranteed and expert technical support

---

- Replacement or refund for products not performing as stated on the datasheet
- Valid for 12 months from date of delivery
- Response to your inquiry within 24 hours
- We provide support in Chinese, English, French, German, Japanese and Spanish
- Extensive multi-media technical resources to help you
- We investigate all quality concerns to ensure our products perform to the highest standards

If the product does not perform as described on this datasheet, we will offer a refund or replacement. For full details of the Abpromise, please visit <https://www.abcam.cn/abpromise> or contact our technical team.

### Terms and conditions

---

- Guarantee only valid for products bought direct from Abcam or one of our authorized distributors