

Anti-CD68 antibody [PG-M1], prediluted ab844

★★★★★ [1 Abreviews](#) [2 References](#) [1 图像](#)

概述

产品名称	Anti-CD68抗体[PG-M1], prediluted
描述	小鼠单克隆抗体[PG-M1] to CD68, prediluted
宿主	Mouse
特异性	This antibody reacts with a glycoprotein of 110 kDa, expressed as intracytoplasmic molecule. It stains macrophages in a wide variety of tissues. Myeloid precursor cells and peripheral granulocytes are negative. This antibody does not react with granulocytes and their precursor cells.
经测试应用	适用于: IHC-P
种属反应性	与反应: Human
免疫原	Tissue, cells or virus corresponding to Mouse CD68. BALB/C mice were immunized with Gaucher's cells.
常规说明	<p>The Life Science industry has been in the grips of a reproducibility crisis for a number of years. Abcam is leading the way in addressing this with our range of recombinant monoclonal antibodies and knockout edited cell lines for gold-standard validation. Please check that this product meets your needs before purchasing.</p> <p>If you have any questions, special requirements or concerns, please send us an inquiry and/or contact our Support team ahead of purchase. Recommended alternatives for this product can be found below, along with publications, customer reviews and Q&As</p>

性能

形式	Liquid
存放说明	Shipped at 4°C. Store at +4°C. Do Not Freeze.
存储溶液	pH: 7.3 Preservative: 0.05% Sodium azide
克隆	Inert stabilizer
克隆编号	单克隆
骨髓瘤	PG-M1
同种型	unknown
	IgG3

轻链类型

kappa

应用

The Abpromise guarantee **Abpromise™**承诺保证使用ab844于以下的经测试应用

“应用说明”部分 下显示的仅为推荐的起始稀释度;实际最佳的稀释度/浓度应由使用者检定。

应用	Ab评论	说明
IHC-P	★★★★★ (1)	

应用说明

This antibody has been pretitrated and quality controlled to work on formalin-fixed paraffin-embedded as well as acetone fixed cryostat tissue sections.
No further titration is required.
We suggest an incubation period of 30-60 minutes at room temperature.
However, depending upon the fixation conditions and the staining system employed, optimal incubation should be determined by the user.
Enzymatic predigestion with proteolytic enzymes is recommended for paraffin embedded tissue sections.
This antibody is not recommended for frozen sections or cell smears.

靶标

功能

Could play a role in phagocytic activities of tissue macrophages, both in intracellular lysosomal metabolism and extracellular cell-cell and cell-pathogen interactions. Binds to tissue- and organ-specific lectins or selectins, allowing homing of macrophage subsets to particular sites. Rapid recirculation of CD68 from endosomes and lysosomes to the plasma membrane may allow macrophages to crawl over selectin-bearing substrates or other cells.

组织特异性

Highly expressed by blood monocytes and tissue macrophages. Also expressed in lymphocytes, fibroblasts and endothelial cells. Expressed in many tumor cell lines which could allow them to attach to selectins on vascular endothelium, facilitating their dissemination to secondary sites.

序列相似性

Belongs to the LAMP family.

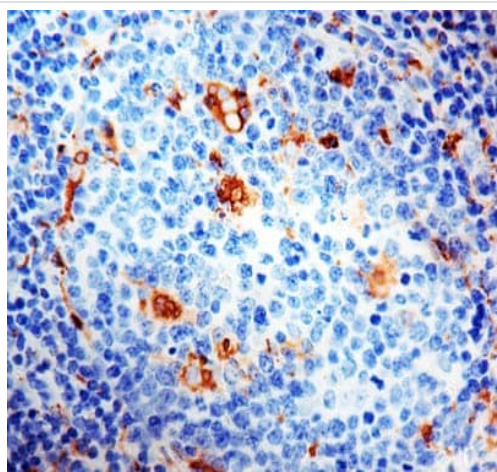
翻译后修饰

N- and O-glycosylated.

细胞定位

Cell membrane and Endosome membrane. Lysosome membrane.

图片



Immunohistochemistry (Formalin/PFA-fixed paraffin-embedded sections) - Anti-CD68 antibody [PG-M1], prediluted (ab844)

ab844 staining CD68 in formalin-fixed, paraffin-embedded Human tonsil tissue by Immunohistochemistry. Staining was detected using DAB.

Please note: All products are "FOR RESEARCH USE ONLY. NOT FOR USE IN DIAGNOSTIC PROCEDURES"

Our Abpromise to you: Quality guaranteed and expert technical support

- Replacement or refund for products not performing as stated on the datasheet
- Valid for 12 months from date of delivery
- Response to your inquiry within 24 hours
- We provide support in Chinese, English, French, German, Japanese and Spanish
- Extensive multi-media technical resources to help you
- We investigate all quality concerns to ensure our products perform to the highest standards

If the product does not perform as described on this datasheet, we will offer a refund or replacement. For full details of the Abpromise, please visit <https://www.abcam.cn/abpromise> or contact our technical team.

Terms and conditions

- Guarantee only valid for products bought direct from Abcam or one of our authorized distributors