

Anti-CD68 antibody [PG-M1] ab783

★★★★★ [2 Abreviews](#) [15 References](#) [2 图像](#)

概述

产品名称	Anti-CD68抗体[PG-M1]
描述	小鼠单克隆抗体[PG-M1] to CD68
宿主	Mouse
经测试应用	适用于: IHC-P 不适用于: ICC or IHC-Fr
种属反应性	与反应: Human
免疫原	Tissue, cells or virus corresponding to CD68. Gaucher cells
阳性对照	IHC-P: Human tonsil and granulomatous inflammatory tissues.
常规说明	<p>The Life Science industry has been in the grips of a reproducibility crisis for a number of years. Abcam is leading the way in addressing this with our range of recombinant monoclonal antibodies and knockout edited cell lines for gold-standard validation. Please check that this product meets your needs before purchasing.</p> <p>If you have any questions, special requirements or concerns, please send us an inquiry and/or contact our Support team ahead of purchase. Recommended alternatives for this product can be found below, along with publications, customer reviews and Q&As</p>

性能

形式	Liquid
存放说明	Shipped at 4°C. Store at +4°C short term (1-2 weeks). Store at -20°C or -80°C. Avoid freeze / thaw cycle.
存储溶液	pH: 7.3 Preservative: 0.05% Sodium azide Constituents: 98.95% Tissue culture supernatant, 1% BSA
纯度	Tissue culture supernatant
克隆	单克隆
克隆编号	PG-M1
同种型	IgG3
轻链类型	kappa

应用

The Abpromise guarantee **Abpromise™**承诺保证使用ab783于以下的经测试应用

“应用说明”部分 下显示的仅为推荐的起始稀释度;实际最佳的稀释度/浓度应由使用者检定。

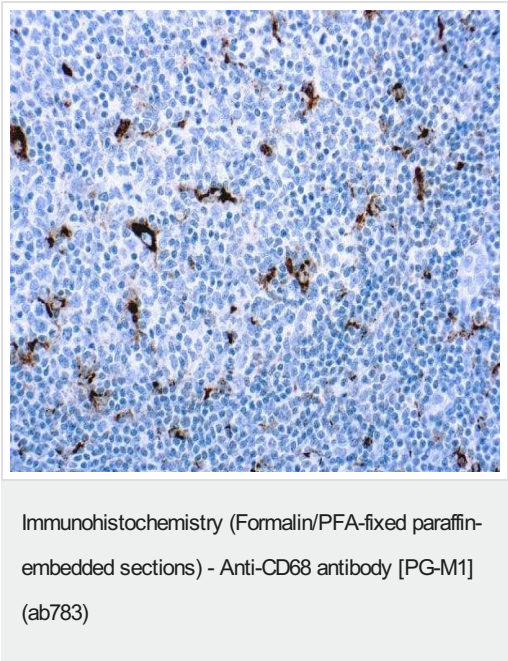
应用	Ab评论	说明
IHC-P	★★★★★ (2)	1/10 - 1/40. Perform enzymatic antigen retrieval before commencing with IHC staining protocol. (use ABC method). We suggest an incubation period of 30-60 minutes at room temperature.

应用说明 Is unsuitable for ICC or IHC-Fr.

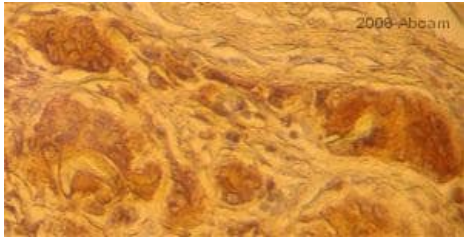
靶标

功能	Could play a role in phagocytic activities of tissue macrophages, both in intracellular lysosomal metabolism and extracellular cell-cell and cell-pathogen interactions. Binds to tissue- and organ-specific lectins or selectins, allowing homing of macrophage subsets to particular sites. Rapid recirculation of CD68 from endosomes and lysosomes to the plasma membrane may allow macrophages to crawl over selectin-bearing substrates or other cells.
组织特异性	Highly expressed by blood monocytes and tissue macrophages. Also expressed in lymphocytes, fibroblasts and endothelial cells. Expressed in many tumor cell lines which could allow them to attach to selectins on vascular endothelium, facilitating their dissemination to secondary sites.
序列相似性	Belongs to the LAMP family.
翻译后修饰	N- and O-glycosylated.
细胞定位	Cell membrane and Endosome membrane. Lysosome membrane.

图片



ab783 staining CD68 in Human tonsil tissue sections by Immunohistochemistry (IHC-P - paraformaldehyde-fixed, paraffin-embedded sections).



Immunohistochemistry (Formalin/PFA-fixed paraffin-embedded sections) - Anti-CD68 antibody [PG-M1] (ab783)

This image is courtesy of an anonymous Abreview.

Paraformaldehyde-fixed, paraffin-embedded human granulomatous inflammatory tissue stained for CD68 using ab783 in immunohistochemical analysis.

Please note: All products are "FOR RESEARCH USE ONLY. NOT FOR USE IN DIAGNOSTIC PROCEDURES"

Our Abpromise to you: Quality guaranteed and expert technical support

- Replacement or refund for products not performing as stated on the datasheet
- Valid for 12 months from date of delivery
- Response to your inquiry within 24 hours
- We provide support in Chinese, English, French, German, Japanese and Spanish
- Extensive multi-media technical resources to help you
- We investigate all quality concerns to ensure our products perform to the highest standards

If the product does not perform as described on this datasheet, we will offer a refund or replacement. For full details of the Abpromise, please visit <https://www.abcam.cn/abpromise> or contact our technical team.

Terms and conditions

- Guarantee only valid for products bought direct from Abcam or one of our authorized distributors