

Anti-CD62L antibody [MEL-14] ab119834

重组

8 References **3 图像**

概述

产品名称	Anti-CD62L抗体[MEL-14]
描述	大鼠单克隆抗体[MEL-14] to CD62L
宿主	Rat
特异性	ab119834 reacts with mouse CD62L, a 75 kDa single chain type I glycoprotein expressed on most peripheral blood B lymphocytes, T lymphocytes, monocytes and granulocytes; it is also present on a subset of NK cells and certain hematopoietic malignant cells.
经测试应用	适用于: Flow Cyt, ICC/IF 不适用于: IHC-P
种属反应性	与反应: Mouse
免疫原	Tissue, cells or virus corresponding to Mouse CD62L. C3H/eb Mouse B cell lymphoma 38C-13.
阳性对照	ICC/IF: Mouse spleen cell. Flow Cyt: Mouse splenocytes.
常规说明	This product was switched from a hybridoma to a recombinant production format on 25 th October 2021. This product is a recombinant monoclonal antibody, which offers several advantages including: - High batch-to-batch consistency and reproducibility - Improved sensitivity and specificity - Long-term security of supply - Animal-free production For more information see here .

性能

形式	Liquid
存放说明	Shipped at 4°C. Store at +4°C short term (1-2 weeks). Upon delivery aliquot. Store at -20°C. Avoid freeze / thaw cycle.
存储溶液	pH: 7.40 Preservative: 0.01% Sodium azide Constituents: 59% PBS, 40% Glycerol (glycerin, glycerine), 0.05% BSA
纯度	Ion Exchange Chromatography
克隆	单克隆

克隆编号 MEL-14

同种型 IgG2a

应用

The Abpromise guarantee **Abpromise™**承诺保证使用ab119834于以下的经测试应用

“应用说明”部分 下显示的仅为推荐的起始稀释度;实际最佳的稀释度/浓度应由使用者检定。

应用	Ab评论	说明
Flow Cyt		1/1000.
ICC/IF		1/100.

应用说明 Is unsuitable for IHC-P.

靶标

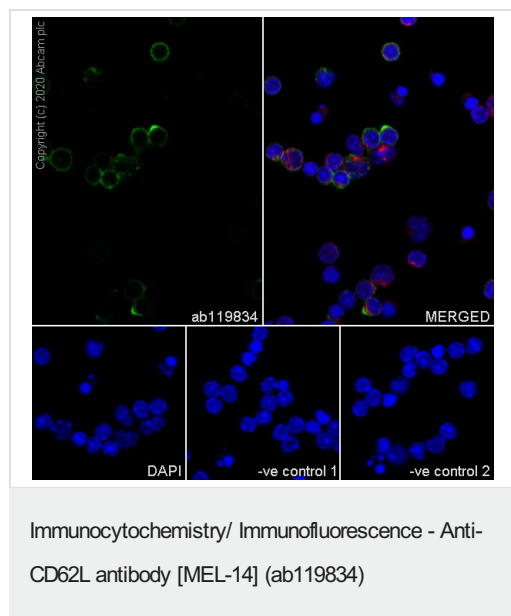
功能 Cell surface adhesion protein. Mediates the adherence of lymphocytes to endothelial cells of high endothelial venules in peripheral lymph nodes. Promotes initial tethering and rolling of leukocytes in endothelia.

组织特异性 Expressed in B cell lines and T lymphocytes.

序列相似性 Belongs to the selectin/LECAM family.
Contains 1 C-type lectin domain.
Contains 1 EGF-like domain.
Contains 2 Sushi (CCP/SCR) domains.

细胞定位 Membrane.

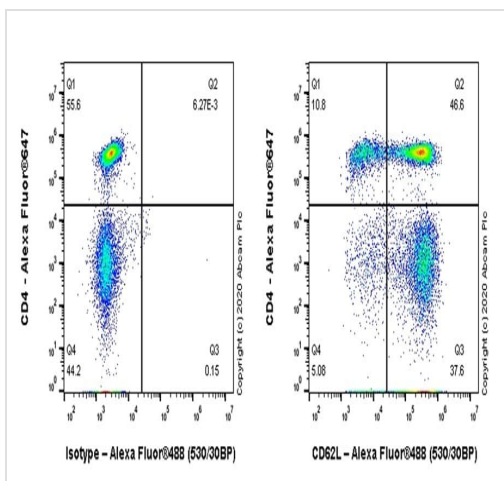
图片



Immunofluorescent analysis of 4% Paraformaldehyde-fixed, 0.1% TritonX-100 permeabilized Mouse spleen cells labelling CD62L with ab119834 at 1/100 dilution, followed by **ab150157** Goat Anti-Rat IgG H&L (Alexa Fluor® 488) antibody at 1/1000 dilution (Green). Confocal image showing membranous staining in some subset of mouse spleen cells is observed. **ab179513** Anti-beta Tubulin rabbit monoclonal antibody was used to counterstain tubulin at 1/200 dilution (Red). The Nuclear counterstain was DAPI (Blue).

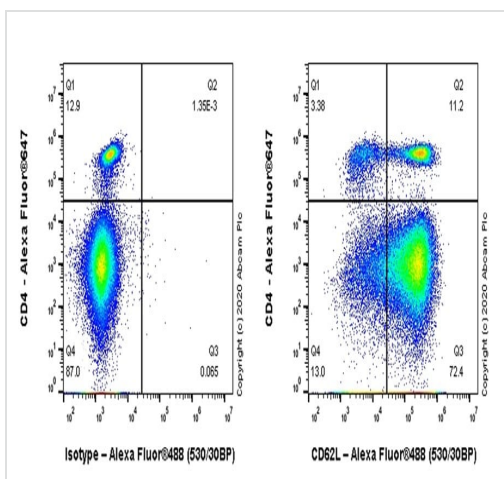
-ve control 1: ab119834 at 1/100 dilution, followed by **ab150080** Goat Anti-Rabbit IgG H&L (Alexa Fluor® 594) at 1/1000 dilution.

-ve control 2: **ab179513** at 1/200 dilution, followed by **ab150157** Goat Anti-Rat IgG H&L (Alexa Fluor® 488) at 1/1000 dilution.



Flow Cytometry - Anti-CD62L antibody [MEL-14]
(ab119834)

Flow cytometric analysis of Mouse splenocyte cells labelling CD62L with ab119834 at 1/500 dilution (0.2 ug). Goat anti rat IgG (Alexa Fluor® 488, **ab150157**) at 1/2000 dilution was used as the secondary antibody. Cells were stained with rat IgG (Left) or ab119834 (Right). Then stained with anti-CD4 conjugated to Alexa Fluor®647 and anti-CD3 conjugated to PerCP. Gated on viable CD3+ T cells.



Flow Cytometry - Anti-CD62L antibody [MEL-14]
(ab119834)

Flow cytometric analysis of Mouse splenocyte cells labelling CD62L with ab119834 at 1/500 dilution (0.2 ug). Goat anti rat IgG (Alexa Fluor® 488, **ab150157**) at 1/2000 dilution was used as the secondary antibody. Cells were stained with rat IgG (Left) or ab119834 (Right). Then stained with anti-CD4 conjugated to Alexa Fluor®647. Gated on viable lymphocytes.

Please note: All products are "FOR RESEARCH USE ONLY. NOT FOR USE IN DIAGNOSTIC PROCEDURES"

Our Abpromise to you: Quality guaranteed and expert technical support

- Replacement or refund for products not performing as stated on the datasheet
- Valid for 12 months from date of delivery
- Response to your inquiry within 24 hours
- We provide support in Chinese, English, French, German, Japanese and Spanish
- Extensive multi-media technical resources to help you
- We investigate all quality concerns to ensure our products perform to the highest standards

If the product does not perform as described on this datasheet, we will offer a refund or replacement. For full details of the Abpromise, please visit <https://www.abcam.cn/abpromise> or contact our technical team.

Terms and conditions

- Guarantee only valid for products bought direct from Abcam or one of our authorized distributors