

Anti-CD45RC antibody [MIL15] ab14125

1 图像

概述

产品名称	Anti-CD45RC抗体[MIL15]
描述	小鼠单克隆抗体[MIL15] to CD45RC
宿主	Mouse
经测试应用	适用于: Flow Cyt
种属反应性	与反应: Pig
免疫原	Full length native protein (purified) (Pig). (Cells isolated from porcine mesenteric lymph node).
常规说明	<p>The Life Science industry has been in the grips of a reproducibility crisis for a number of years. Abcam is leading the way in addressing this with our range of recombinant monoclonal antibodies and knockout edited cell lines for gold-standard validation. Please check that this product meets your needs before purchasing.</p> <p>If you have any questions, special requirements or concerns, please send us an inquiry and/or contact our Support team ahead of purchase. Recommended alternatives for this product can be found below, along with publications, customer reviews and Q&As</p>

性能

形式	Liquid
存放说明	Shipped at 4°C. Store at +4°C short term (1-2 weeks). Upon delivery aliquot. Store at -20°C or -80°C. Avoid freeze / thaw cycle.
存储溶液	pH: 7.40 Preservative: 0.09% Sodium azide Constituents: Tissue culture supernatant, 1.72% Tris HCl, 10% Fetal calf serum
纯度	Tissue culture supernatant
克隆	单克隆
克隆编号	MIL15
同种型	IgM

应用

The Abpromise guarantee

Abpromise™承诺保证使用ab14125于以下的经测试应用

“应用说明”部分 下显示的仅为推荐的起始稀释度;实际最佳的稀释度/浓度应由使用者检定。

应用	Ab评论	说明
Flow Cyt		Use 10µl for 10 ⁶ cells.

靶标

功能	Protein tyrosine-protein phosphatase required for T-cell activation through the antigen receptor. Acts as a positive regulator of T-cell coactivation upon binding to DPP4. The first PTPase domain has enzymatic activity, while the second one seems to affect the substrate specificity of the first one. Upon T-cell activation, recruits and dephosphorylates SKAP1 and FYN. Dephosphorylates LYN, and thereby modulates LYN activity.
疾病相关	Severe combined immunodeficiency autosomal recessive T-cell-negative/B-cell-positive/NK-cell-positive Multiple sclerosis
序列相似性	Belongs to the protein-tyrosine phosphatase family. Receptor class 1/6 subfamily. Contains 2 fibronectin type-III domains. Contains 2 tyrosine-protein phosphatase domains.
结构域	The first PTPase domain interacts with SKAP1.
翻译后修饰	Heavily N- and O-glycosylated.
细胞定位	Membrane. Membrane raft. Colocalized with DPP4 in membrane rafts.

图片

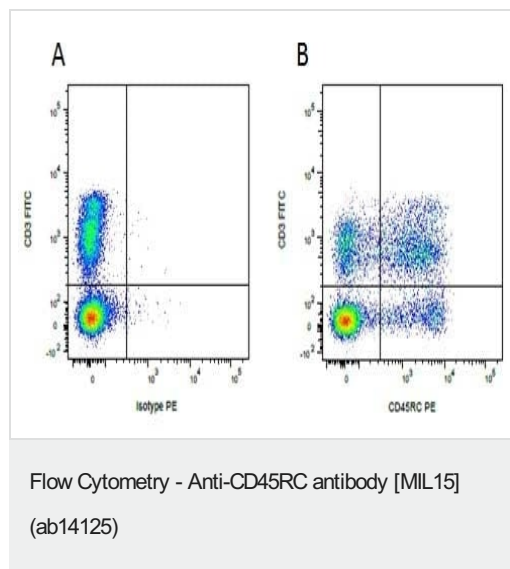


Figure A. FITC conjugated mouse anti porcine CD3 and purified mouse IgM isotype control detected with goat anti mouse IgM PE.

Figure B. FITC conjugated mouse anti porcine CD3 and purified mouse Anti-CD45RC antibody [MIL15] (ab14125) detected with goat anti mouse IgM.

All experiments performed on red cell lysed porcine blood gated on mononuclear cells.

Please note: All products are "FOR RESEARCH USE ONLY. NOT FOR USE IN DIAGNOSTIC PROCEDURES"

Our Abpromise to you: Quality guaranteed and expert technical support

- Replacement or refund for products not performing as stated on the datasheet
- Valid for 12 months from date of delivery
- Response to your inquiry within 24 hours

- We provide support in Chinese, English, French, German, Japanese and Spanish
- Extensive multi-media technical resources to help you
- We investigate all quality concerns to ensure our products perform to the highest standards

If the product does not perform as described on this datasheet, we will offer a refund or replacement. For full details of the Abpromise, please visit <https://www.abcam.cn/abpromise> or contact our technical team.

Terms and conditions

- Guarantee only valid for products bought direct from Abcam or one of our authorized distributors