

# Anti-CD43 antibody [MEM-59] ab9088

**7 References**   **2 图像**

### 概述

产品名称	Anti-CD43抗体[MEM-59]
描述	小鼠单克隆抗体[MEM-59] to CD43
宿主	Mouse
特异性	Recognizes neuraminidase-sensitive epitope on human CD43 molecule (Leukosialin), which is involved in lymphocyte activation.
经测试应用	<b>适用于:</b> Flow Cyt, IHC-P
种属反应性	<b>与反应:</b> Human
免疫原	Tissue, cells or virus corresponding to Human CD43. Human T lymphocytes
阳性对照	IHC-P: Human spleen tissue.
常规说明	<p>The Life Science industry has been in the grips of a reproducibility crisis for a number of years. Abcam is leading the way in addressing this with our range of recombinant monoclonal antibodies and knockout edited cell lines for gold-standard validation. Please check that this product meets your needs before purchasing.</p> <p>If you have any questions, special requirements or concerns, please send us an inquiry and/or contact our Support team ahead of purchase. Recommended alternatives for this product can be found below, along with publications, customer reviews and Q&amp;As</p>

### 性能

形式	Liquid
存放说明	Shipped at 4°C. Store at +4°C short term (1-2 weeks). Upon delivery aliquot. Store at -20°C or -80°C. Avoid freeze / thaw cycle.
存储溶液	<p>pH: 7.40</p> <p>Preservative: 0.097% Sodium azide</p> <p>Constituent: PBS</p>
纯度	Protein A purified
纯化说明	Purified from TCS. Purity >95% by SDS-PAGE.
克隆	单克隆
克隆编号	MEM-59
同种型	IgG1

应用

The Abpromise guarantee      **Abpromise™**承诺保证使用ab9088于以下的经测试应用

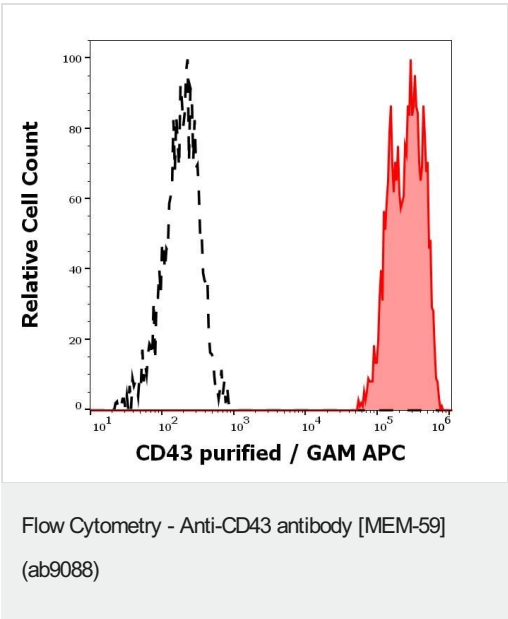
“应用说明”部分 下显示的仅为推荐的起始稀释度;实际最佳的稀释度/浓度应由使用者检定。

应用	Ab评论	说明
Flow Cyt		Use a concentration of 1 - 5 µg/ml.
IHC-P		Use a concentration of 10 µg/ml.

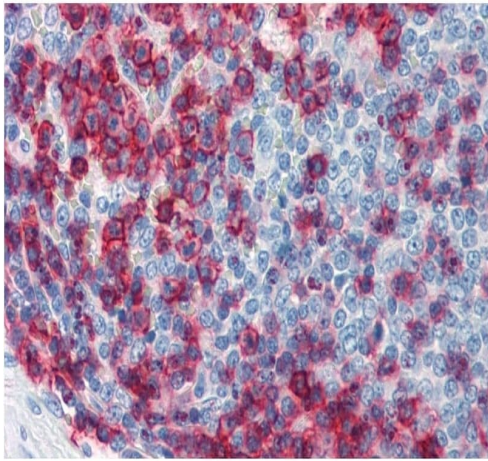
靶标

功能	One of the major glycoproteins of thymocytes and T lymphocytes. Plays a role in the physicochemical properties of the T-cell surface and in lectin binding. Presents carbohydrate ligands to selectins. Has an extended rodlike structure that could protrude above the glycocalyx of the cell and allow multiple glycan chains to be accessible for binding. Is a counter receptor for SN/Siglec-1 (By similarity). During T-cell activation is actively removed from the T-cell-APC (antigen-presenting cell) contact site thus suggesting a negative regulatory role in adaptive immune response.
组织特异性	Cell surface of thymocytes, T-lymphocytes, neutrophils, plasma cells and myelomas.
翻译后修饰	Glycosylated; has a high content of sialic acid and O-linked carbohydrate structures.
细胞定位	Membrane.

图片



Flow cytometric analysis of Human Peripheral Blood cells labelling CD43 with ab9088 at 2 ug/ml showing separation of human CD43 positive lymphocytes (red-filled) from human CD43 negative blood debris (black-dashed).



Immunohistochemical analysis of Paraffin-embedded sections  
Human Spleen tissue labelling CD43 with ab9088.

Immunohistochemistry (Formalin/PFA-fixed paraffin-embedded sections) - Anti-CD43 antibody [MEM-59] (ab9088)

**Please note:** All products are "FOR RESEARCH USE ONLY. NOT FOR USE IN DIAGNOSTIC PROCEDURES"

### Our Abpromise to you: Quality guaranteed and expert technical support

---

- Replacement or refund for products not performing as stated on the datasheet
- Valid for 12 months from date of delivery
- Response to your inquiry within 24 hours
- We provide support in Chinese, English, French, German, Japanese and Spanish
- Extensive multi-media technical resources to help you
- We investigate all quality concerns to ensure our products perform to the highest standards

If the product does not perform as described on this datasheet, we will offer a refund or replacement. For full details of the Abpromise, please visit <https://www.abcam.cn/abpromise> or contact our technical team.

### Terms and conditions

---

- Guarantee only valid for products bought direct from Abcam or one of our authorized distributors