

Anti-CD38 antibody [EPR21079] ab216343

敲除验证 重组 RabMAb

★★★★★ [2 Abreviews](#) [4 References](#) [9 图像](#)

概述

| | |
|-------|--|
| 产品名称 | Anti-CD38抗体[EPR21079] |
| 描述 | 兔单克隆抗体[EPR21079] to CD38 |
| 宿主 | Rabbit |
| 经测试应用 | 适用于: WB, IHC-P |
| 种属反应性 | 与反应: Mouse |
| 免疫原 | Recombinant fragment. This information is proprietary to Abcam and/or its suppliers. |
| 阳性对照 | WB: P388D1 whole cell lysate; Mouse spleen, lymph node, colon and thymus lysates. IHC-P: Mouse spleen, liver and kidney tissues. |
| 常规说明 | <p>This product is a recombinant monoclonal antibody, which offers several advantages including:</p> <ul style="list-style-type: none">- High batch-to-batch consistency and reproducibility- Improved sensitivity and specificity- Long-term security of supply- Animal-free production <p>For more information see here.</p> <p>Our RabMAb[®] technology is a patented hybridoma-based technology for making rabbit monoclonal antibodies. For details on our patents, please refer to RabMAb[®] patents.</p> |

性能

| | |
|------|---|
| 形式 | Liquid |
| 存放说明 | Shipped at 4°C. Store at +4°C short term (1-2 weeks). Upon delivery aliquot. Store at -20°C long term. Avoid freeze / thaw cycle. |
| 存储溶液 | pH: 7.2 Preservative: 0.01% Sodium azide Constituents: PBS, 40% Glycerol, 0.05% BSA |
| 纯度 | Protein A purified |
| 克隆 | 单克隆 |
| 克隆编号 | EPR21079 |
| 同种型 | IgG |

应用

The Abpromise guarantee

Abpromise™ 承诺保证使用 ab216343 于以下的经测试应用

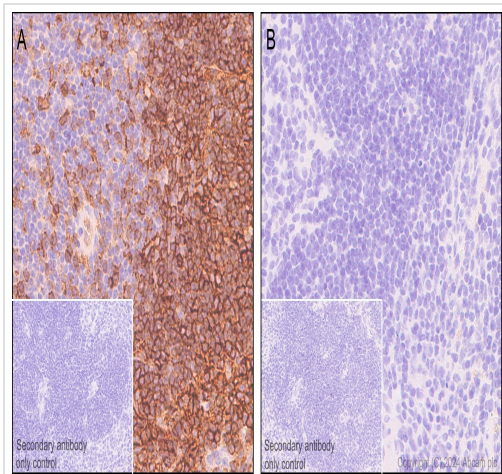
“应用说明”部分下显示的仅为推荐的起始稀释度；实际最佳的稀释度/浓度应由使用者检定。

| 应用 | Ab评论 | 说明 |
|-------|-----------|--|
| WB | ★★★★★ (2) | 1/1000. Detects a band of approximately 42 kDa (predicted molecular weight: 34 kDa). |
| IHC-P | | 1/1000. Perform heat mediated antigen retrieval with Tris/EDTA buffer pH 9.0 before commencing with IHC staining protocol. |

靶标

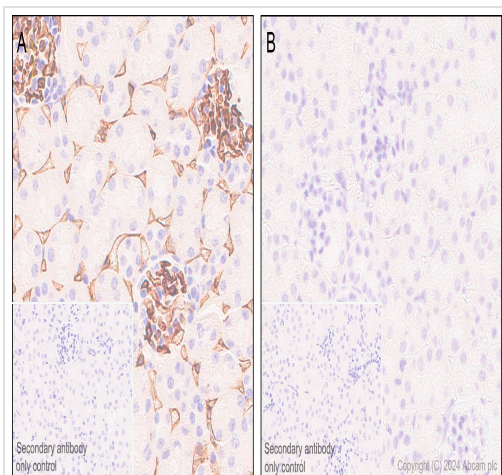
| | |
|-------|--|
| 功能 | Synthesizes cyclic ADP-ribose, a second messenger for glucose-induced insulin secretion. Also has cADPr hydrolase activity. Also moonlights as a receptor in cells of the immune system. |
| 组织特异性 | Expressed at high levels in pancreas, liver, kidney, brain, testis, ovary, placenta, malignant lymphoma and neuroblastoma. |
| 序列相似性 | Belongs to the ADP-ribosyl cyclase family. |
| 发展阶段 | Preferentially expressed at both early and late stages of the B and T-cell maturation. It is also detected on erythroid and myeloid progenitors in bone marrow, where the level of surface expression was shown to decrease during differentiation of blast-forming unit E to colony-forming unit E. |
| 细胞定位 | Membrane. |
| 形式 | There are 2 isoforms produced by alternative splicing. |

图片



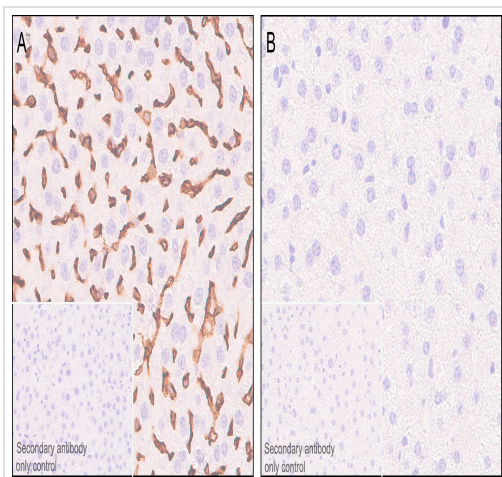
Immunohistochemistry (Formalin/PFA-fixed paraffin-embedded sections) - Anti-CD38 antibody [EPR21079] (ab216343)

Immunohistochemical analysis of paraffin-embedded (A) Spleen tissue from wild-type C57BL/6JGpt mice (B) Spleen tissue from CD38 knockout mice staining with ab216343 at 1/2000 dilution and ready-to-use Goat Anti-Rabbit IgG H&L (HRP) secondary. Counterstaining with hematoxylin. Heat mediated antigen retrieval was performed with Citrate buffer (pH 6.0, Epitope Retrieval Solution 1) for 20 mins. Positive staining on (A) Spleen tissue from wild-type C57BL/6JGpt mice and no staining on (B) Spleen tissue from CD38 knockout mice. The section was incubated with ab216343 for 30 mins at room temperature. The immunostaining was performed on a Leica Biosystems BOND™ RX instrument. The tissue samples were kindly provided by GemPharmatech. C57BL/6JGpt wildtype mice and Cd38-KO homozygous mice (Strain ID: T011481).



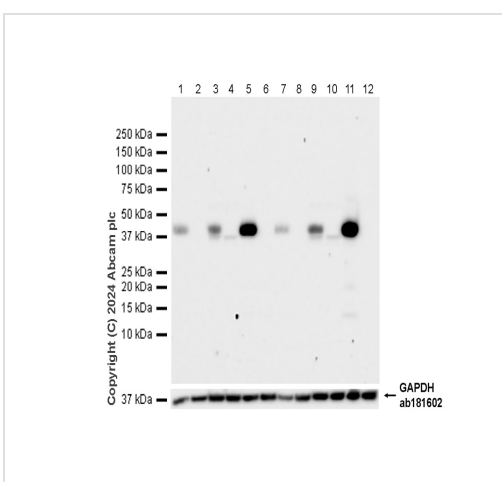
Immunohistochemistry (Formalin/PFA-fixed paraffin-embedded sections) - Anti-CD38 antibody [EPR21079] (ab216343)

Immunohistochemical analysis of paraffin-embedded (A) Kidney tissue from wild-type C57BL/6JGpt mice (B) Kidney tissue from CD38 knockout mice staining with ab216343 at 1/2000 dilution and ready-to-use Goat Anti-Rabbit IgG H&L (HRP) secondary. Counterstaining with hematoxylin. Heat mediated antigen retrieval was performed with Citrate buffer (pH 6.0, Epitope Retrieval Solution 1) for 20 mins. Positive staining on (A) Kidney tissue from wild-type C57BL/6JGpt mice and no staining on (B) Kidney tissue from CD38 knockout mice. The section was incubated with ab216343 for 30 mins at room temperature. The immunostaining was performed on a Leica Biosystems BOND™ RX instrument. The tissue samples were kindly provided by GemPharmatech. C57BL/6JGpt wildtype mice and Cd38-KO homozygous mice (Strain ID: T011481).



Immunohistochemistry (Formalin/PFA-fixed paraffin-embedded sections) - Anti-CD38 antibody [EPR21079] (ab216343)

Immunohistochemical analysis of paraffin-embedded (A) Liver tissue from wild-type C57BL/6JGpt mice (B) Liver tissue from CD38 knockout mice staining with ab216343 at 1/2000 dilution and ready-to-use Goat Anti-Rabbit IgG H&L (HRP) secondary. Counterstaining with hematoxylin. Heat mediated antigen retrieval was performed with Citrate buffer (pH 6.0, Epitope Retrieval Solution 1) for 20 mins. Positive staining on (A) Liver tissue from wild-type C57BL/6JGpt mice and no staining on (B) Liver tissue from CD38 knockout mice. The section was incubated with ab216343 for 30 mins at room temperature. The immunostaining was performed on a Leica Biosystems BOND™ RX instrument. The tissue samples were kindly provided by GemPharmatech. C57BL/6JGpt wildtype mice and Cd38-KO homozygous mice (Strain ID: T011481).



Western blot - Anti-CD38 antibody [EPR21079] (ab216343)

All lanes : Anti-CD38 antibody [EPR21079] (ab216343) at 1/1000 dilution

- Lane 1 :** Wild-type mouse kidney tissue lysate (male)
- Lane 2 :** CD38 knockout mouse kidney tissue lysate (male)
- Lane 3 :** Wild-type mouse liver tissue lysate (male)
- Lane 4 :** CD38 knockout mouse liver tissue lysate (male)
- Lane 5 :** Wild-type mouse spleen tissue lysate (male)
- Lane 6 :** CD38 knockout spleen tissue lysate (male)
- Lane 7 :** Wild-type mouse kidney tissue lysate (female)
- Lane 8 :** CD38 knockout mouse kidney tissue lysate (female)
- Lane 9 :** Wild-type mouse liver tissue lysate (female)
- Lane 10 :** CD38 knockout mouse liver tissue lysate (female)
- Lane 11 :** Wild-type mouse spleen tissue lysate (female)
- Lane 12 :** CD38 knockout mouse spleen tissue lysate (female)

Secondary

All lanes : Goat Anti-Rabbit IgG H&L (HRP) (**ab97051**) at 1/20000 dilution

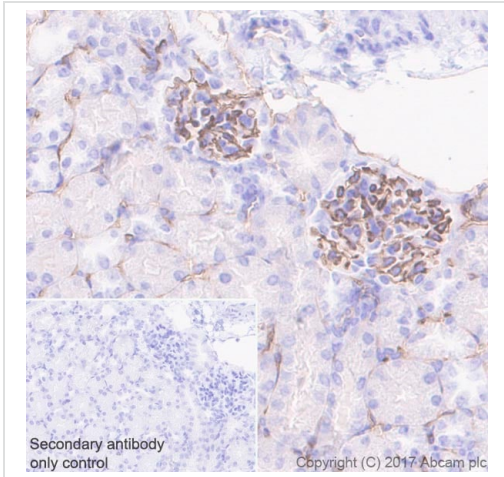
Predicted band size: 34 kDa

Observed band size: 42 kDa

Exposure time: 38 seconds

The tissue samples were kindly provided by GemPharmatech. C57BL/6JGpt wildtype mice and CD38-KO homozygous mice

(Strain ID: T011481).

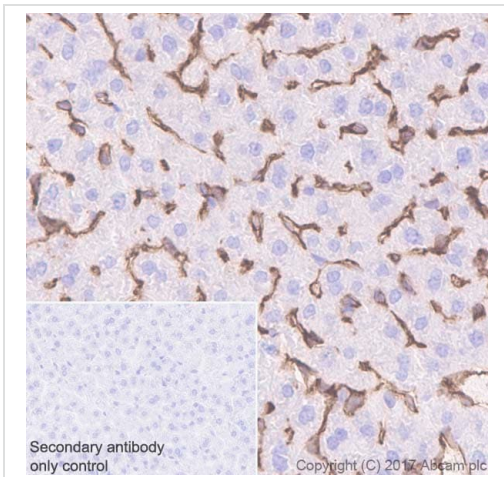


Immunohistochemistry (Formalin/PFA-fixed paraffin-embedded sections) - Anti-CD38 antibody [EPR21079] (ab216343)

Immunohistochemical analysis of paraffin-embedded mouse kidney tissue labeling CD38 with ab216343 at 1/1000 dilution, followed by Goat Anti-Rabbit IgG H&L (HRP) Ready to use. Positive staining in endothelial cells of mouse kidney (PMID: 25078456). Counter stained with Hematoxylin.

Secondary antibody only control: Used PBS instead of primary antibody, secondary antibody is Goat Anti-Rabbit IgG H&L (HRP) Ready to use.

Perform heat mediated antigen retrieval with Tris/EDTA buffer pH 9.0 before commencing with IHC staining protocol.

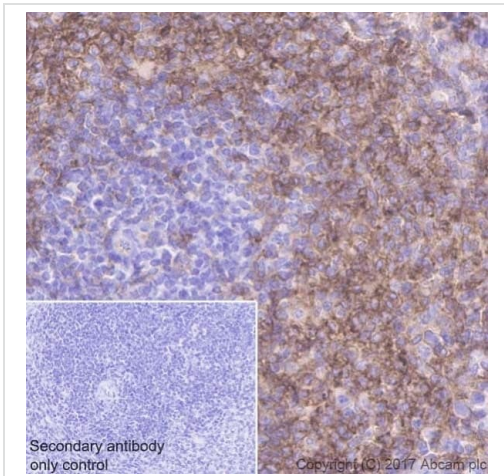


Immunohistochemistry (Formalin/PFA-fixed paraffin-embedded sections) - Anti-CD38 antibody [EPR21079] (ab216343)

Immunohistochemical analysis of paraffin-embedded mouse liver tissue labeling CD38 with ab216343 at 1/1000 dilution, followed by Goat Anti-Rabbit IgG H&L (HRP) Ready to use. Positive staining in the sinusoids of mouse liver (PMID: 17200192). Counter stained with Hematoxylin.

Secondary antibody only control: Used PBS instead of primary antibody, secondary antibody is Goat Anti-Rabbit IgG H&L (HRP) Ready to use.

Perform heat mediated antigen retrieval with Tris/EDTA buffer pH 9.0 before commencing with IHC staining protocol.

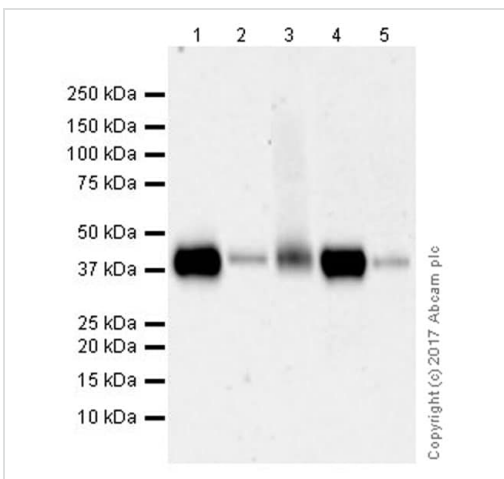


Immunohistochemistry (Formalin/PFA-fixed paraffin-embedded sections) - Anti-CD38 antibody [EPR21079] (ab216343)

Immunohistochemical analysis of paraffin-embedded mouse spleen tissue labeling CD38 with ab216343 at 1/1000 dilution, followed by Goat Anti-Rabbit IgG H&L (HRP) Ready to use. Membranous staining on mouse spleen (PMID: 10360965). Counter stained with Hematoxylin.

Secondary antibody only control: Used PBS instead of primary antibody, secondary antibody is Goat Anti-Rabbit IgG H&L (HRP) Ready to use.

Perform heat mediated antigen retrieval with Tris/EDTA buffer pH 9.0 before commencing with IHC staining protocol.



Western blot - Anti-CD38 antibody [EPR21079] (ab216343)

All lanes : Anti-CD38 antibody [EPR21079] (ab216343) at 1/1000 dilution

Lane 1 : Mouse spleen lysate

Lane 2 : P388D1 (mouse lymphoma monocyte; macrophage cell line) whole cell lysate

Lane 3 : Mouse lymph node lysate

Lane 4 : Mouse colon lysate

Lane 5 : Mouse thymus lysate

Lysates/proteins at 20 µg per lane.

Secondary

All lanes : Goat Anti-Rabbit IgG H&L (HRP) (**ab97051**) at 1/20000 dilution

Developed using the ECL technique.

Predicted band size: 34 kDa

Observed band size: 42 kDa

Exposure time: 3 minutes

Blocking/Dilution buffer: 5% NFDm/TBST.

The blot was developed on a BIO-RAD® ChemiDoc™ MP instrument. The observed molecular mass is consistent with the

Why choose a recombinant antibody?

Research with confidence
Consistent and reproducible results

Long-term and scalable supply
Recombinant technology

Success from the first experiment
Confirmed specificity

Ethical standards compliant
Animal-free production

Anti-CD38 antibody [EPR21079] (ab216343)

Please note: All products are "FOR RESEARCH USE ONLY. NOT FOR USE IN DIAGNOSTIC PROCEDURES"

Our Abpromise to you: Quality guaranteed and expert technical support

- Replacement or refund for products not performing as stated on the datasheet
- Valid for 12 months from date of delivery
- Response to your inquiry within 24 hours
- We provide support in Chinese, English, French, German, Japanese and Spanish
- Extensive multi-media technical resources to help you
- We investigate all quality concerns to ensure our products perform to the highest standards

If the product does not perform as described on this datasheet, we will offer a refund or replacement. For full details of the Abpromise, please visit <https://www.abcam.cn/abpromise> or contact our technical team.

Terms and conditions

- Guarantee only valid for products bought direct from Abcam or one of our authorized distributors