

### Anti-CD32A antibody [OTI9C6] ab124408

14 图像

#### 概述

---

<b>产品名称</b>	Anti-CD32A抗体[OTI9C6]
<b>描述</b>	小鼠单克隆抗体[OTI9C6] to CD32A
<b>宿主</b>	Mouse
<b>经测试应用</b>	<b>适用于:</b> WB, IHC-P, ICC/IF, IP
<b>种属反应性</b>	<b>与反应:</b> Human, African green monkey
<b>免疫原</b>	Recombinant full length protein corresponding to Human CD32A.
<b>阳性对照</b>	HEK293T cell lysate transfected with pCMV6-ENTRY CD32; Human Breast, Colon, Kidney, Lung, Ovary, Ovary adenocarcinoma, Pancreas, Thyroid, Thyroid carcinoma, Endometrium and Prostate tissues; COS7 cells transiently transfected with pCMV6-ENTRY CD32;
<b>常规说明</b>	<p>Dilute in PBS (pH7.3) before use. Avoid repeated freeze-thaws.</p> <p>The clone number has been updated from 9C6 to OTI9C6, both clone numbers name the same antibody clone.</p> <p>The Life Science industry has been in the grips of a reproducibility crisis for a number of years. Abcam is leading the way in addressing this with our range of recombinant monoclonal antibodies and knockout edited cell lines for gold-standard validation. Please check that this product meets your needs before purchasing.</p> <p>If you have any questions, special requirements or concerns, please send us an inquiry and/or contact our Support team ahead of purchase. Recommended alternatives for this product can be found below, along with publications, customer reviews and Q&amp;As</p>

#### 性能

---

<b>形式</b>	Liquid
<b>存放说明</b>	Shipped at 4°C. Store at -20°C. Stable for 12 months at -20°C.
<b>存储溶液</b>	pH: 7.30 Preservative: 0.02% Sodium azide Constituents: 48% PBS, 50% Glycerol, 1% BSA
<b>纯度</b>	Protein G purified
<b>纯化说明</b>	Purified from TCS
<b>克隆</b>	单克隆

克隆编号 OTI9C6

同种型 IgG1

## 应用

**The Abpromise guarantee** **Abpromise™**承诺保证使用ab124408于以下的经测试应用

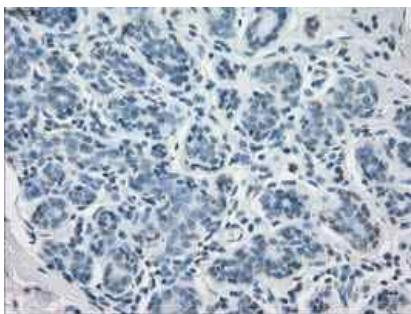
“应用说明”部分 下显示的仅为推荐的起始稀释度;实际最佳的稀释度/浓度应由使用者检定。

应用	Ab评论	说明
WB		1/2000. Predicted molecular weight: 35 kDa.
IHC-P		1/50.
ICC/IF		1/100.
IP		Use a concentration of 4 µg/ml.

## 靶标

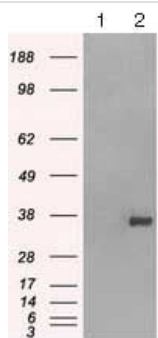
功能	Binds to the Fc region of immunoglobulins gamma. Low affinity receptor. By binding to IgG it initiates cellular responses against pathogens and soluble antigens. Promotes phagocytosis of opsonized antigens.
组织特异性	Found on monocytes, neutrophils and eosinophil platelets.
序列相似性	Contains 2 Ig-like C2-type (immunoglobulin-like) domains.
翻译后修饰	Phosphorylated by SRC-type Tyr-kinases such as LYN, BLK, FYN, HCK and SYK.
细胞定位	Cell membrane.

## 图片



ab124408, at 1/50 dilution, staining CD32A in paraffin-embedded Human breast tissue by Immunohistochemistry.

Immunohistochemistry (Formalin/PFA-fixed paraffin-embedded sections) - Anti-CD32A antibody [OTI9C6] (ab124408)



Western blot - Anti-CD32A antibody [OTI9C6] (ab124408)

**All lanes** : Anti-CD32A antibody [OTI9C6] (ab124408) at 1/2000 dilution

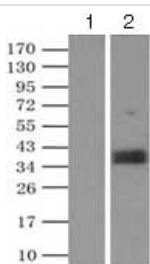
**Lane 1** : HEK293T cell lysate transfected with pCMV6-ENTRY control

**Lane 2** : HEK293T cell lysate transfected with pCMV6-ENTRY CD32

Lysates/proteins at 5 µg per lane.

**Predicted band size:** 35 kDa

HEK293T cell lysates were generated from transient transfection of the cDNA clone (RC205503)



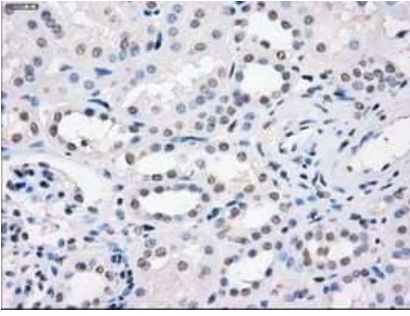
Immunoprecipitation - Anti-CD32A antibody [OTI9C6] (ab124408)

Immunoprecipitation of CD32A. Lane 1: Negative control, no IgG. Lane2: 2µg of ab124408 and 20µl (0.1mg) of goat anti-mouse conjugated magnetic beads were mixed with lysate and incubated overnight. For each experiment, 500µl of DDK tagged CD32 overexpression lysates (at 1:5 dilution with HEK293T lysate) was used. Predicted band size : 35 kDa



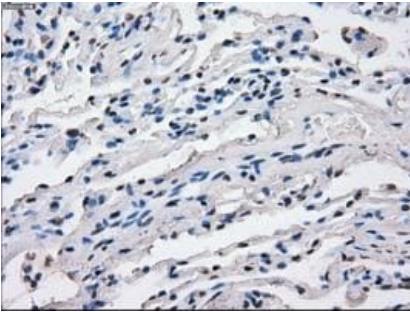
Immunohistochemistry (Formalin/PFA-fixed paraffin-embedded sections) - Anti-CD32A antibody [OTI9C6] (ab124408)

ab124408, at 1/50 dilution, staining CD32A in paraffin-embedded Human colon tissue by Immunohistochemistry.



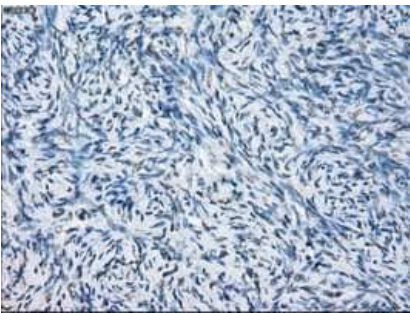
ab124408, at 1/50 dilution, staining CD32A in paraffin-embedded Human kidney tissue by Immunohistochemistry.

Immunohistochemistry (Formalin/PFA-fixed paraffin-embedded sections) - Anti-CD32A antibody [OTI9C6] (ab124408)



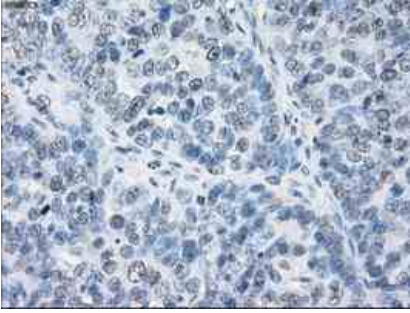
ab124408, at 1/50 dilution, staining CD32A in paraffin-embedded Human lung tissue by Immunohistochemistry.

Immunohistochemistry (Formalin/PFA-fixed paraffin-embedded sections) - Anti-CD32A antibody [OTI9C6] (ab124408)



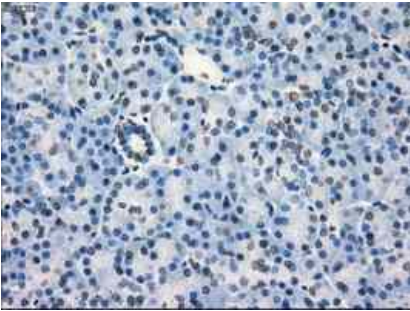
ab124408, at 1/50 dilution, staining CD32A in paraffin-embedded Human ovary tissue by Immunohistochemistry.

Immunohistochemistry (Formalin/PFA-fixed paraffin-embedded sections) - Anti-CD32A antibody [OTI9C6] (ab124408)



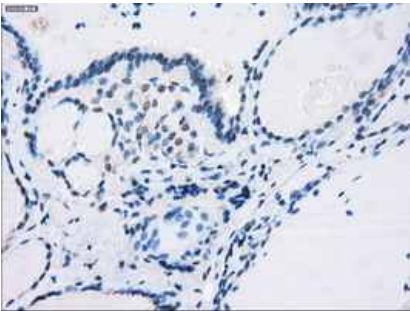
ab124408, at 1/50 dilution, staining CD32A in paraffin-embedded Human ovary adenocarcinoma tissue by Immunohistochemistry.

Immunohistochemistry (Formalin/PFA-fixed paraffin-embedded sections) - Anti-CD32A antibody [OTI9C6] (ab124408)



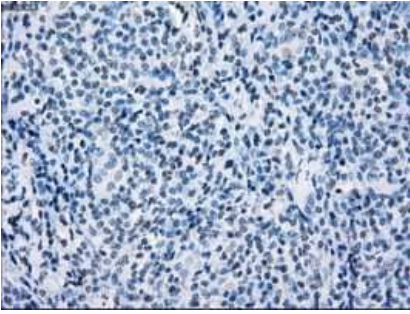
ab124408, at 1/50 dilution, staining CD32A in paraffin-embedded Human pancreas tissue by Immunohistochemistry.

Immunohistochemistry (Formalin/PFA-fixed paraffin-embedded sections) - Anti-CD32A antibody [OTI9C6] (ab124408)



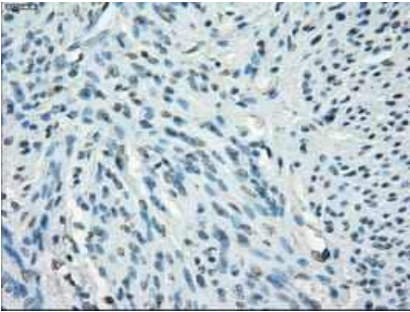
ab124408, at 1/50 dilution, staining CD32A in paraffin-embedded Human thyroid tissue by Immunohistochemistry.

Immunohistochemistry (Formalin/PFA-fixed paraffin-embedded sections) - Anti-CD32A antibody [OTI9C6] (ab124408)



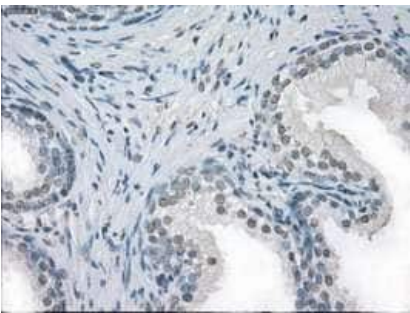
ab124408, at 1/50 dilution, staining CD32A in paraffin-embedded Human thyroid carcinoma tissue by Immunohistochemistry.

Immunohistochemistry (Formalin/PFA-fixed paraffin-embedded sections) - Anti-CD32A antibody [OTI9C6] (ab124408)



ab124408, at 1/50 dilution, staining CD32A in paraffin-embedded Human endometrium tissue by Immunohistochemistry.

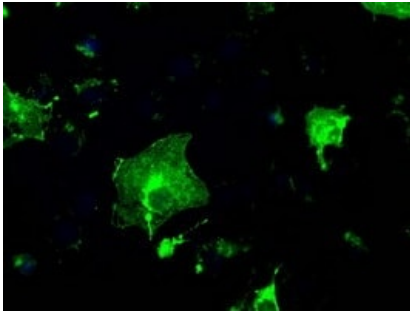
Immunohistochemistry (Formalin/PFA-fixed paraffin-embedded sections) - Anti-CD32A antibody [OTI9C6] (ab124408)



ab124408, at 1/50 dilution, staining CD32A in paraffin-embedded Human prostate tissue by Immunohistochemistry.

Immunohistochemistry (Formalin/PFA-fixed paraffin-embedded sections) - Anti-CD32A antibody [OTI9C6] (ab124408)





ab124408, at 1/100 dilution, staining CD32A in COS7 cells transiently transfected with pCMV6-ENTRY CD32 by Immunofluorescence.

Immunocytochemistry/ Immunofluorescence - Anti-CD32A antibody [OT19C6] (ab124408)

**Please note:** All products are "FOR RESEARCH USE ONLY. NOT FOR USE IN DIAGNOSTIC PROCEDURES"

### Our Abpromise to you: Quality guaranteed and expert technical support

---

- Replacement or refund for products not performing as stated on the datasheet
- Valid for 12 months from date of delivery
- Response to your inquiry within 24 hours
- We provide support in Chinese, English, French, German, Japanese and Spanish
- Extensive multi-media technical resources to help you
- We investigate all quality concerns to ensure our products perform to the highest standards

If the product does not perform as described on this datasheet, we will offer a refund or replacement. For full details of the Abpromise, please visit <https://www.abcam.cn/abpromise> or contact our technical team.

### Terms and conditions

---

- Guarantee only valid for products bought direct from Abcam or one of our authorized distributors