

Anti-CD31 antibody [RM0032-1D12] - BSA and Azide free ab56299

★★★★★ [7 Abreviews](#) [72 References](#) [6 图像](#)

概述

产品名称	Anti-CD31抗体[RM0032-1D12] - BSA and Azide free
描述	大鼠单克隆抗体[RM0032-1D12] to CD31 - BSA and Azide free
宿主	Rat
经测试应用	适用于: IHC-P
种属反应性	与反应: Mouse
免疫原	Full length protein corresponding to Mouse CD31. Endothelial membrane protein
阳性对照	IHC-P: Mouse kidney, lung, heart and liver tissue.
常规说明	<p>Proteinase K antigen retrieval is essential.</p> <p>The Life Science industry has been in the grips of a reproducibility crisis for a number of years. Abcam is leading the way in addressing this with our range of recombinant monoclonal antibodies and knockout edited cell lines for gold-standard validation. Please check that this product meets your needs before purchasing.</p> <p>If you have any questions, special requirements or concerns, please send us an inquiry and/or contact our Support team ahead of purchase. Recommended alternatives for this product can be found below, along with publications, customer reviews and Q&As</p>

性能

形式	Liquid
存放说明	Shipped at 4°C. Upon delivery aliquot and store at -20°C. Avoid freeze / thaw cycles.
存储溶液	Constituent: PBS
无载体	是
纯度	Protein G purified
纯化说明	Purified from tissue culture supernatant and lyophilized from a 0.2 µm filtered solution in phosphate-buffered saline (PBS).
克隆	单克隆
克隆编号	RM0032-1D12
同种型	IgG2a

应用

The Abpromise guarantee **Abpromise™**承诺保证使用ab56299于以下的经测试应用

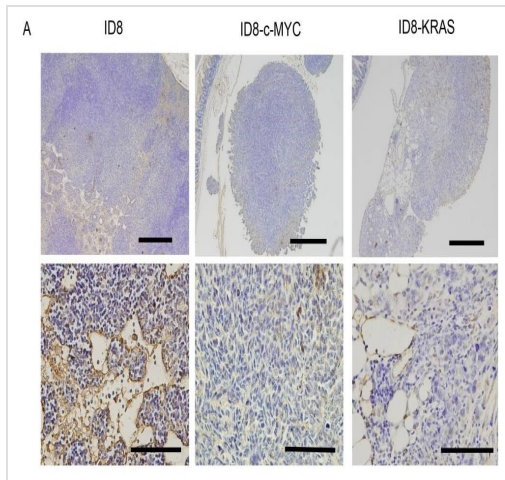
“应用说明”部分 下显示的仅为推荐的起始稀释度;实际最佳的稀释度/浓度应由使用者检定。

应用	Ab评论	说明
IHC-P	★★★★★ (5)	1/50 - 1/400. 4% PFA ix preferred fixative over formalin. Fixation should be overnight. Carrying out Proteinase K enzymatic retrieval is essential (please see specific protocol below and Abreviews). A sensitive detection system such as HRP polymer system is recommended. The ideal fixation time will depend on the size of the tissue block

靶标

功能	Induces susceptibility to atherosclerosis (By similarity). Cell adhesion molecule which is required for leukocyte transendothelial migration (TEM) under most inflammatory conditions. Tyr-690 plays a critical role in TEM and is required for efficient trafficking of PECAM1 to and from the lateral border recycling compartment (LBRC) and is also essential for the LBRC membrane to be targeted around migrating leukocytes. Prevents phagocyte ingestion of closely apposed viable cells by transmitting 'detachment' signals, and changes function on apoptosis, promoting tethering of dying cells to phagocytes (the encounter of a viable cell with a phagocyte via the homophilic interaction of PECAM1 on both cell surfaces leads to the viable cell's active repulsion from the phagocyte. During apoptosis, the inside-out signaling of PECAM1 is somehow disabled so that the apoptotic cell does not actively reject the phagocyte anymore. The lack of this repulsion signal together with the interaction of the eat-me signals and their respective receptors causes the attachment of the apoptotic cell to the phagocyte, thus triggering the process of engulfment). Isoform Delta15 is unable to protect against apoptosis. Modulates BDKRB2 activation. Regulates bradykinin- and hyperosmotic shock-induced ERK1/2 activation in human umbilical cord vein cells (HUVEC).
组织特异性	Expressed on platelets and leukocytes and is primarily concentrated at the borders between endothelial cells. Isoform Long predominates in all tissues examined. Isoform Delta12 is detected only in trachea. Isoform Delta14-15 is only detected in lung. Isoform Delta14 is detected in all tissues examined with the strongest expression in heart. Isoform Delta15 is expressed in brain, testis, ovary, cell surface of platelets, human umbilical vein endothelial cells (HUVECs), Jurkat T-cell leukemia, human erythroleukemia (HEL) and U937 histiocytic lymphoma cell lines (at protein level).
序列相似性	Contains 6 Ig-like C2-type (immunoglobulin-like) domains.
结构域	The Ig-like C2-type domains 2 and 3 contribute to formation of the complex with BDKRB2 and in regulation of its activity.
翻译后修饰	Phosphorylated on Ser and Tyr residues after cellular activation. In endothelial cells Fyn mediates mechanical-force (stretch or pull) induced tyrosine phosphorylation.
细胞定位	Membrane. Cell junction. Localizes to the lateral border recycling compartment (LBRC) and recycles from the LBRC to the junction in resting endothelial cells and Cell junction. Localizes to the lateral border recycling compartment (LBRC) and recycles from the LBRC to the junction in

图片



Immunohistochemistry (Formalin/PFA-fixed paraffin-embedded sections) - Anti-CD31 antibody [RM0032-1D12] - BSA and Azide free (ab56299)

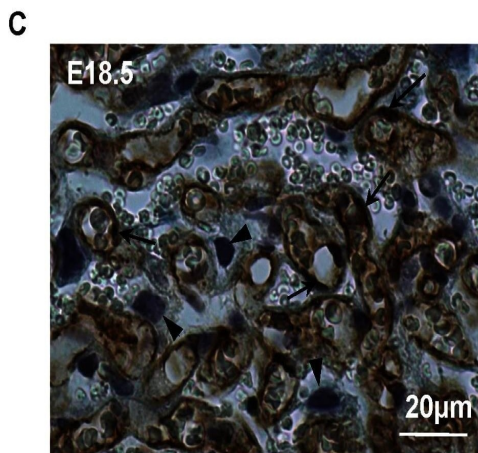
Yoshida et al PLoS One. 2016 Aug 2;11(8):e0160330. doi: 10.1371/journal.pone.0160330. eCollection 2016. Fig 2. Reproduced under the Creative Commons license <http://creativecommons.org/licenses/by/4.0/>

Tumor vascularization and VEGF in ascites.

(A) ID8, ID8-c-MYC, or ID8-KRAS cells (2×10^6) were intra-peritoneal injected into C57/BL6 mice. Mice were sacrificed when the body weight reached 23 g. Disseminations were obtained from mice when sacrificed. Tumor vascularization of each dissemination was assessed using CD31 immunohistochemistry (ab56299).

Scale bars represent 200 μ m and 50 μ m at low and high magnification, respectively.

Paraffin sections (4- μ m-thick) of the biggest tumor sections from ID8, ID8-c-MYC, and ID8-KRAS mice were dewaxed in xylene and rehydrated through graded ethanol to water. Antigens were retrieved by boiling in 10 mM citrate buffer (pH 6.0) for 30 min. The cooled sections were incubated in a peroxidase blocking solution for 10 min to quench endogenous peroxidase. Sections were incubated in a protein blocking solution at room temperature for 10 min to block non-specific binding. Sections were then stained for Ki67 using rabbit monoclonal antibody against mouse Ki67, CD31 using a rat monoclonal antibody against mouse CD31 (ab56299, Abcam 1:100 dilution).

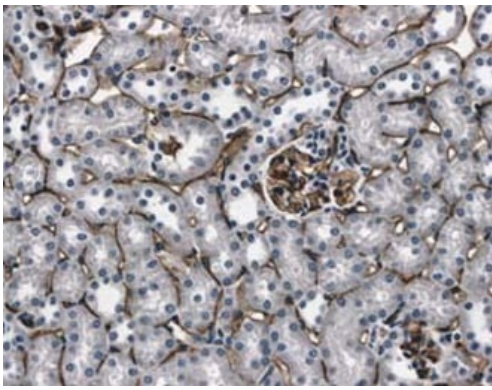


Immunohistochemistry (Formalin/PFA-fixed paraffin-embedded sections) - Anti-CD31 antibody [RM0032-1D12] - BSA and Azide free (ab56299)

Vasilopoulou et al PLoS One. 2013 Jun 12;8(6):e65402. doi: 10.1371/journal.pone.0065402. Print 2013. Fig 8. Reproduced under the Creative Commons license <http://creativecommons.org/licenses/by/4.0/>

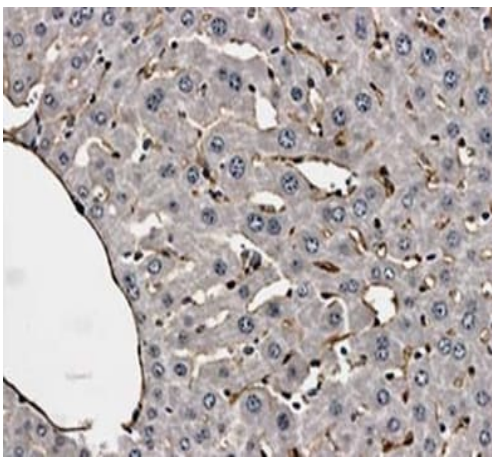
Proliferation and cell number in male wild-type (+/y) and male Mct8 knockout (-/y) placentae.

(Panel C): Representative picture demonstrating CD31 immunoreactivity (marker of endothelial cells represented by brown staining) in the mouse placenta at E18.5. The nuclei were counterstained using hematoxylin. Endothelial cells are indicated by arrows and trophoblast cells by arrowheads.



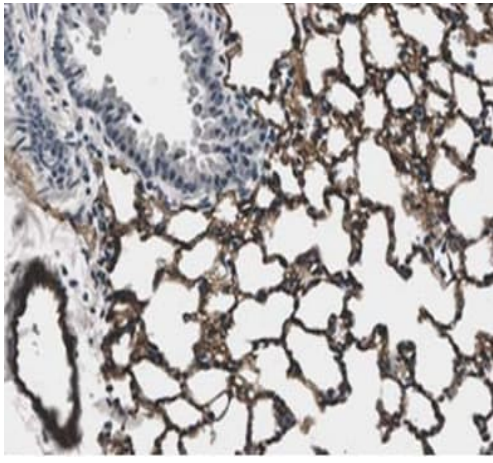
Immunohistochemistry (Formalin/PFA-fixed paraffin-embedded sections) - Anti-CD31 antibody [RM0032-1D12] - BSA and Azide free (ab56299)

ab56299 at 1/400 staining CD31 in LPS treated mouse kidney tissue section by Immunohistochemistry (Formalin/PFA fixed paraffin-embedded sections).



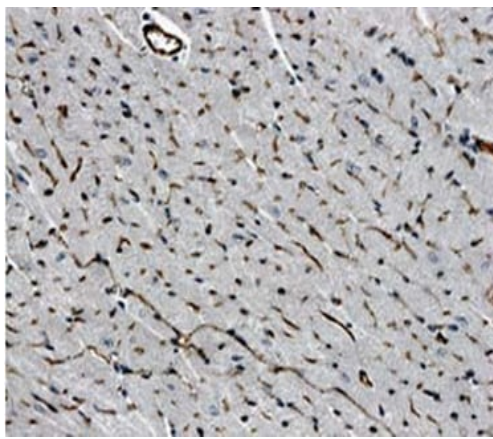
Immunohistochemistry (Formalin/PFA-fixed paraffin-embedded sections) - Anti-CD31 antibody [RM0032-1D12] - BSA and Azide free (ab56299)

ab56299 at 1/400 dilution, staining CD31 in LPS treated mouse liver tissue section by Immunohistochemistry (Formalin/PFA fixed paraffin-embedded sections).



Immunohistochemistry (Formalin/PFA-fixed paraffin-embedded sections) - Anti-CD31 antibody [RM0032-1D12] - BSA and Azide free (ab56299)

ab56299 at 1/400 staining CD31 in LPS treated mouse lung tissue section by Immunohistochemistry (Formalin/PFA fixed paraffin-embedded sections).



Immunohistochemistry (Formalin/PFA-fixed paraffin-embedded sections) - Anti-CD31 antibody [RM0032-1D12] - BSA and Azide free (ab56299)

ab56299 at 1/400 dilution, staining CD31 in LPS treated mouse heart tissue section by Immunohistochemistry (Formalin/PFA fixed paraffin-embedded sections).

Please note: All products are "FOR RESEARCH USE ONLY. NOT FOR USE IN DIAGNOSTIC PROCEDURES"

Our Abpromise to you: Quality guaranteed and expert technical support

- Replacement or refund for products not performing as stated on the datasheet
- Valid for 12 months from date of delivery
- Response to your inquiry within 24 hours
- We provide support in Chinese, English, French, German, Japanese and Spanish
- Extensive multi-media technical resources to help you
- We investigate all quality concerns to ensure our products perform to the highest standards

If the product does not perform as described on this datasheet, we will offer a refund or replacement. For full details of the Abpromise, please visit <https://www.abcam.cn/abpromise> or contact our technical team.

Terms and conditions

- Guarantee only valid for products bought direct from Abcam or one of our authorized distributors