

# Anti-CD300e antibody [UP-H2] ab188410

## 2 图像

### 概述

---

<b>产品名称</b>	Anti-CD300e抗体[UP-H2]
<b>描述</b>	小鼠单克隆抗体[UP-H2] to CD300e
<b>宿主</b>	Mouse
<b>经测试应用</b>	<b>适用于:</b> Flow Cyt, WB, IP, Functional Studies
<b>种属反应性</b>	<b>与反应:</b> Human
<b>免疫原</b>	Tissue, cells or virus corresponding to Human CD300e. CD300e-HA-transfected cells.
<b>常规说明</b>	<p>The Life Science industry has been in the grips of a reproducibility crisis for a number of years. Abcam is leading the way in addressing this with our range of recombinant monoclonal antibodies and knockout edited cell lines for gold-standard validation. Please check that this product meets your needs before purchasing.</p> <p>If you have any questions, special requirements or concerns, please send us an inquiry and/or contact our Support team ahead of purchase. Recommended alternatives for this product can be found below, along with publications, customer reviews and Q&amp;As</p>

### 性能

---

<b>形式</b>	Liquid
<b>存放说明</b>	Shipped at 4°C. Store at +4°C short term (1-2 weeks). Upon delivery aliquot. Store at -20°C long term. Avoid freeze / thaw cycle.
<b>存储溶液</b>	pH: 7.40 Preservative: 0.0975% Sodium azide Constituent: 99% PBS
<b>纯度</b>	Protein A purified
<b>纯化说明</b>	ab188410 is purified from hybridoma culture supernatant by protein-A affinity chromatography. > 95% (by SDS-PAGE).
<b>克隆</b>	单克隆
<b>克隆编号</b>	UP-H2
<b>同种型</b>	IgG1

### 应用

## The Abpromise guarantee

**Abpromise™** 承诺保证使用 ab188410 于以下的经测试应用

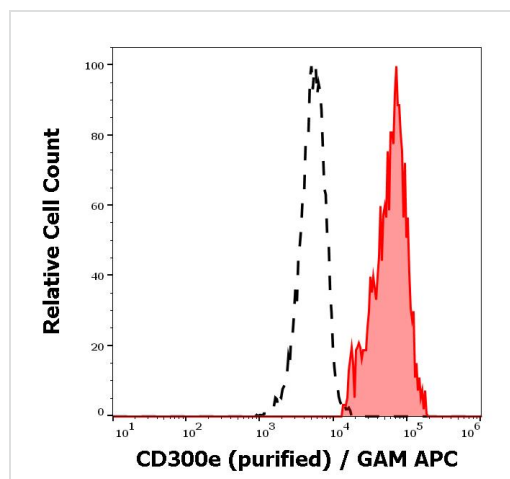
“应用说明”部分下显示的仅为推荐的起始稀释度；实际最佳的稀释度/浓度应由使用者检定。

应用	Ab评论	说明
Flow Cyt		Use a concentration of 1 - 4 µg/ml.
WB		Use at an assay dependent concentration.
IP		Use at an assay dependent concentration.
Functional Studies		Use at an assay dependent concentration.

## 靶标

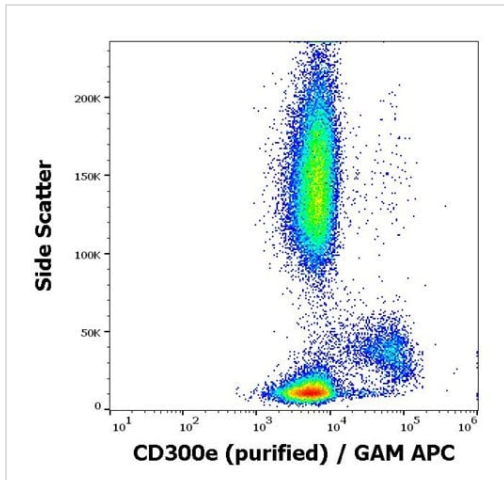
功能	Probably acts as an activating receptor.
组织特异性	Present on the surface of mature hematopoietic cells of the monocyte and myeloid lineages (at protein level).
序列相似性	Belongs to the CD300 family. Contains 1 Ig-like V-type (immunoglobulin-like) domain.
翻译后修饰	N-glycosylated.
细胞定位	Cell membrane.

## 图片



Flow cytometry surface staining analysis of human peripheral whole blood using ab188410 purified antibody with a concentration of 4µg/ml, GAM APC. There is a separation of CD300e negative lymphocytes in black, and monocytes in red.

Flow Cytometry - Anti-CD300e antibody [UP-H2]  
(ab188410)



Flow cytometric pattern using surface staining of human peripheral whole blood. A concentration of 4µg/ml ab188410 purified antibody was used in the sample, GAM APC

Flow Cytometry - Anti-CD300e antibody [UP-H2]  
(ab188410)

**Please note:** All products are "FOR RESEARCH USE ONLY. NOT FOR USE IN DIAGNOSTIC PROCEDURES"

### Our Abpromise to you: Quality guaranteed and expert technical support

- Replacement or refund for products not performing as stated on the datasheet
- Valid for 12 months from date of delivery
- Response to your inquiry within 24 hours
- We provide support in Chinese, English, French, German, Japanese and Spanish
- Extensive multi-media technical resources to help you
- We investigate all quality concerns to ensure our products perform to the highest standards

If the product does not perform as described on this datasheet, we will offer a refund or replacement. For full details of the Abpromise, please visit <https://www.abcam.cn/abpromise> or contact our technical team.

### Terms and conditions

- Guarantee only valid for products bought direct from Abcam or one of our authorized distributors