



# Anti-CD3 epsilon antibody ab26249

## 2 图像

### 概述

产品名称	Anti-CD3 epsilon抗体
描述	兔多克隆抗体to CD3 epsilon
宿主	Rabbit
经测试应用	适用于: IHC-P, WB
种属反应性	与反应: Human
免疫原	Synthetic peptide: KAKAKPVTRGAGA , corresponding to amino acids 156-168 of Human CD3 epsilon  <a href="#">Run BLAST with</a>  <a href="#">Run BLAST with</a>
阳性对照	Recombinant Human CD3 epsilon protein ( <a href="#">ab114153</a> ) can be used as a positive control in WB. Tonsil.
常规说明	<p>The Life Science industry has been in the grips of a reproducibility crisis for a number of years. Abcam is leading the way in addressing this with our range of recombinant monoclonal antibodies and knockout edited cell lines for gold-standard validation. Please check that this product meets your needs before purchasing.</p> <p>If you have any questions, special requirements or concerns, please send us an inquiry and/or contact our Support team ahead of purchase. Recommended alternatives for this product can be found below, along with publications, customer reviews and Q&amp;As</p>

### 性能

形式	Liquid
存放说明	Shipped at 4°C. Store at +4°C short term (1-2 weeks). Store at -20°C or -80°C. Avoid freeze / thaw cycle.
存储溶液	pH: 7.3 Preservative: 0.05% Sodium azide Constituent: 1% BSA
纯度	Protein A purified
克隆	多克隆
同种型	IgG

应用

The Abpromise guarantee      **Abpromise™**承诺保证使用ab26249于以下的经测试应用

“应用说明”部分 下显示的仅为推荐的起始稀释度;实际最佳的稀释度/浓度应由使用者检定。

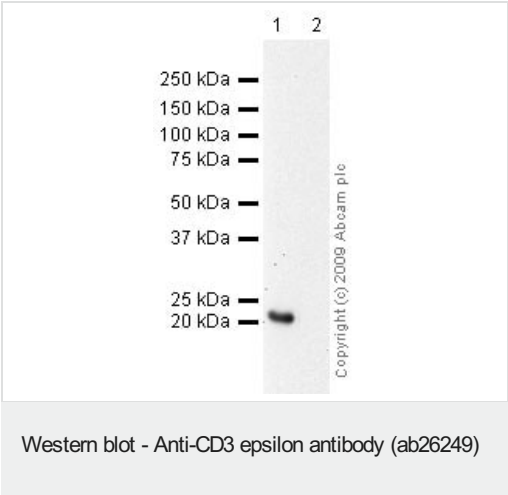
应用	Ab评论	说明
IHC-P		
WB		

应用说明	IHC-P: 1/50 - 1/100. Perform heat mediated antigen retrieval with 10 mM citrate buffer, pH 6.0 before commencing with IHC staining protocol. WB: 1/500. Detects a band of approximately 23 kDa (predicted molecular weight: 23 kDa).  Not yet tested in other applications. Optimal dilutions/concentrations should be determined by the end user.
------	--

靶标

功能	The CD3 complex mediates signal transduction.
序列相似性	Contains 1 Ig-like (immunoglobulin-like) domain. Contains 1 ITAM domain.
细胞定位	Membrane.

图片



**All lanes :** Anti-CD3 epsilon antibody (ab26249) at 1/500 dilution

**Lane 1 :** Jurkat (Human T cell lymphoblast-like cell line) Whole Cell Lysate

**Lane 2 :** HeLa (Human epithelial carcinoma cell line) Whole Cell Lysate

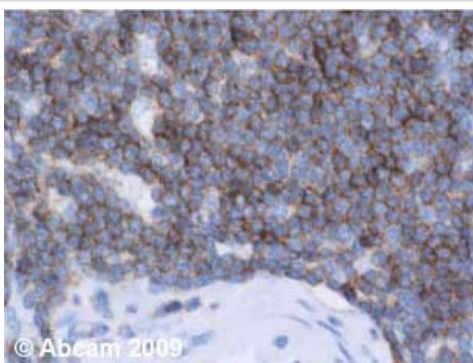
Lysates/proteins at 10 µg per lane.

**Secondary**

**All lanes :** Goat polyclonal to Rabbit IgG - H&L - Pre-Adsorbed (HRP) at 1/3000 dilution

**Predicted band size:** 23 kDa

**Observed band size:** 23 kDa



Immunohistochemistry (Formalin/PFA-fixed paraffin-embedded sections) - Anti-CD3 epsilon antibody (ab26249)

ab26249 (2µg/ml) staining CD3 epsilon in human spleen.

Sections were stained using an automated system (DAKO Autostainer Plus ), at room temperature: sections were rehydrated and antigen retrieved with the Dako 3 in 1 AR buffers citrate pH6.1. Slides were peroxidase blocked in 3% H<sub>2</sub>O<sub>2</sub> in methanol for 10 mins. They were then blocked with Dako Protein block for 10 minutes (containing casein 0.25% in PBS) then incubated with primary antibody for 20 min and detected with Dako envision flex amplification kit for 30 minutes. Colorimetric detection was completed with Diaminobenzidine for 5 minutes. Slides were counterstained with Haematoxylin and coverslipped under DePeX. Please note that for manual staining we recommend to optimize the primary antibody concentration and incubation time (overnight incubation), and amplification may be required.

**Please note:** All products are "FOR RESEARCH USE ONLY. NOT FOR USE IN DIAGNOSTIC PROCEDURES"

### Our Abpromise to you: Quality guaranteed and expert technical support

- Replacement or refund for products not performing as stated on the datasheet
- Valid for 12 months from date of delivery
- Response to your inquiry within 24 hours
- We provide support in Chinese, English, French, German, Japanese and Spanish
- Extensive multi-media technical resources to help you
- We investigate all quality concerns to ensure our products perform to the highest standards

If the product does not perform as described on this datasheet, we will offer a refund or replacement. For full details of the Abpromise, please visit <https://www.abcam.cn/abpromise> or contact our technical team.

### Terms and conditions

- Guarantee only valid for products bought direct from Abcam or one of our authorized distributors