

Anti-CD272/BTLA antibody ab96560

[1 References](#) [2 图像](#)

概述

产品名称	Anti-CD272/BTLA抗体
描述	兔多克隆抗体to CD272/BTLA
宿主	Rabbit
经测试应用	适用于: WB, IHC-P
种属反应性	与反应: Human
免疫原	Recombinant fragment corresponding to Human CD272/BTLA aa 1-164. Database link: NP_001078826
阳性对照	WB: 293T, A431, H1299, HeLa, MOLT4 and Raji cell lysates IHC-P: MDAMB468 xenograft
常规说明	<p>The Life Science industry has been in the grips of a reproducibility crisis for a number of years. Abcam is leading the way in addressing this with our range of recombinant monoclonal antibodies and knockout edited cell lines for gold-standard validation. Please check that this product meets your needs before purchasing.</p> <p>If you have any questions, special requirements or concerns, please send us an inquiry and/or contact our Support team ahead of purchase. Recommended alternatives for this product can be found below, along with publications, customer reviews and Q&As</p>

性能

形式	Liquid
存放说明	Shipped at 4°C. Upon delivery aliquot and store at -20°C or -80°C. Avoid repeated freeze / thaw cycles.
存储溶液	pH: 7.00 Preservative: 0.01% Thimerosal (merthiolate) Constituents: 1.21% Tris, 0.75% Glycine, 10% Glycerol (glycerin, glycerine)
纯度	Immunogen affinity purified
克隆	多克隆
同种型	IgG

应用

The Abpromise guarantee

Abpromise™ 承诺保证使用 ab96560 于以下的经测试应用

“应用说明”部分下显示的仅为推荐的起始稀释度；实际最佳的稀释度/浓度应由使用者检定。

应用	Ab评论	说明
WB		1/500 - 1/3000. Predicted molecular weight: 33 kDa.
IHC-P		1/100 - 1/500.

靶标

功能

Lymphocyte inhibitory receptor which inhibits lymphocytes during immune response.

序列相似性

Contains 1 Ig-like V-type (immunoglobulin-like) domain.

翻译后修饰

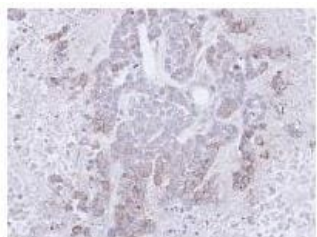
Phosphorylated on Tyr residues by TNFRSF14 and by antigen receptors cross-linking, both inducing association with PTPN6 and PTPN11.

N-glycosylated.

细胞定位

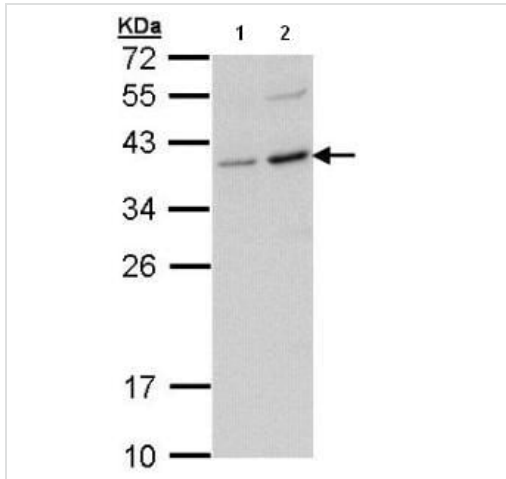
Membrane.

图片



ab96560, at a 1/100 dilution, staining CD272/BTLA in paraffin embedded MDAMB468 xenograft by Immunohistochemical analysis.

Immunohistochemistry (Formalin/PFA-fixed paraffin-embedded sections) - Anti-CD272/BTLA antibody (ab96560)



Western blot - Anti-CD272/BTLA antibody (ab96560)

All lanes : Anti-CD272/BTLA antibody (ab96560) at 1/1000 dilution

Lane 1 : MOLT4 whole cell lysates

Lane 2 : Raji whole cell lysates

Lysates/proteins at 30 µg per lane.

Predicted band size: 33 kDa

12% SDS PAGE

Please note: All products are "FOR RESEARCH USE ONLY. NOT FOR USE IN DIAGNOSTIC PROCEDURES"

Our Abpromise to you: Quality guaranteed and expert technical support

- Replacement or refund for products not performing as stated on the datasheet
- Valid for 12 months from date of delivery
- Response to your inquiry within 24 hours
- We provide support in Chinese, English, French, German, Japanese and Spanish
- Extensive multi-media technical resources to help you
- We investigate all quality concerns to ensure our products perform to the highest standards

If the product does not perform as described on this datasheet, we will offer a refund or replacement. For full details of the Abpromise, please visit <https://www.abcam.cn/abpromise> or contact our technical team.

Terms and conditions

- Guarantee only valid for products bought direct from Abcam or one of our authorized distributors