

Anti-CD23 antibody [SP23] ab16702

重组 RabMAb

3 References 3 图像

概述	
产品名称	Anti-CD23抗体[SP23]
描述	兔单克隆抗体[SP23] to CD23
宿主	Rabbit
经测试应用	适用于: WB, IHC-P, Flow Cyt
种属反应性	与反应: Human
免疫原	Recombinant fragment within Human CD23 aa 1-250. The exact sequence is proprietary. Database link: P06734
阳性对照	IHC-P: Human tonsil. Flow Cyt: Jurkat cell lysate. WB: Raji cell lysate.
常规说明	<p>This product is a recombinant monoclonal antibody, which offers several advantages including:</p> <ul style="list-style-type: none">- High batch-to-batch consistency and reproducibility- Improved sensitivity and specificity- Long-term security of supply- Animal-free production <p>For more information see here.</p> <p>This product is FOR RESEARCH USE ONLY. For commercial use, please contact partnerships@abcam.com.</p>
性能	
形式	Liquid
存放说明	Shipped at 4°C. Upon delivery aliquot and store at -20°C. Avoid freeze / thaw cycles.
存储溶液	pH: 7.20 Preservative: 0.1% Sodium azide Constituents: 1% BSA, PBS
纯度	Protein A purified
克隆	单克隆
克隆编号	SP23
同种型	IgG

应用

The Abpromise guarantee **Abpromise™** 承诺保证使用 ab16702 于以下的经测试应用

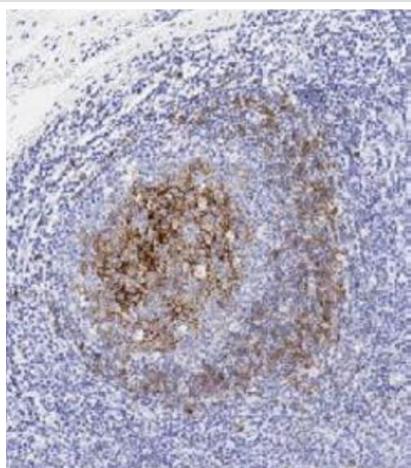
“应用说明”部分 下显示的仅为推荐的起始稀释度; 实际最佳的稀释度/浓度应由使用者检定。

应用	Ab 评论	说明
WB		Use at an assay dependent concentration.
IHC-P		1/100. Staining of formalin fixed tissues requires boiling tissue sections in 10mM citrate buffer, pH 6.0 for 10 minutes followed by cooling at room temperature for 20 minutes.
Flow Cyt		Use at an assay dependent concentration. ab172730 - Rabbit monoclonal IgG, is suitable for use as an isotype control with this antibody.

靶标

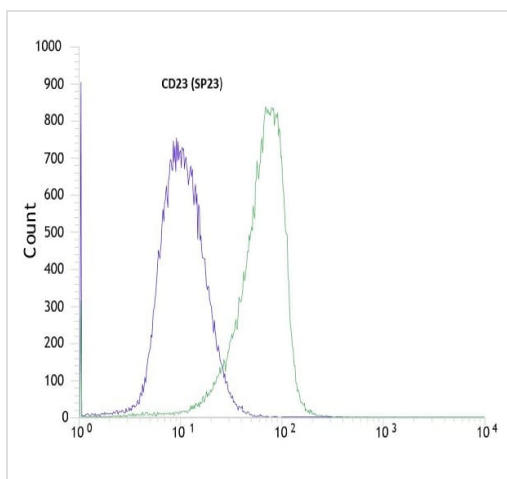
功能	This receptor has essential roles in the regulation of IgE production and in the differentiation of B-cells (it is a B-cell-specific antigen).
序列相似性	Contains 1 C-type lectin domain.
翻译后修饰	N- and O-glycosylated.
细胞定位	Cell membrane. Secreted. Also exists as a soluble excreted form.

图片



Immunohistochemical analysis of paraffin-embedded Human tonsil labeling CD23 with ab16702 at 1/100 (76 µg/ml). The section was pre-treated using heat mediated antigen retrieval with sodium citrate buffer (pH 6.0, epitope retrieval solution 1) for 20 mins. The section was then incubated with ab16702 for 15 mins at room temperature and detected using an HRP conjugated compact polymer system. The immunostaining was performed on a Leica Biosystems BOND® RX instrument. DAB was used as the chromogen. Counterstained with Hematoxylin and mounted with DPX.

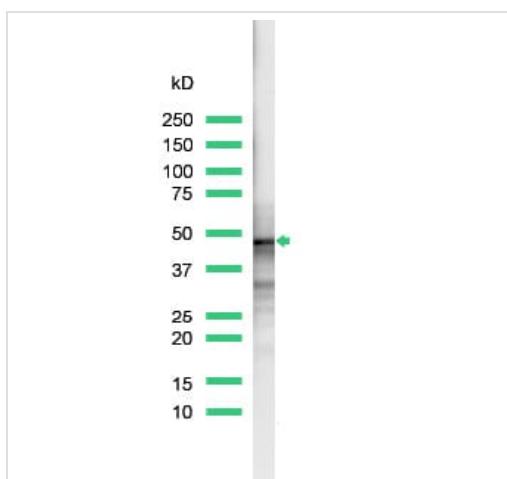
Immunohistochemistry (Formalin/PFA-fixed paraffin-embedded sections) - Anti-CD23 antibody [SP23] (ab16702)



Flow Cytometry - Anti-CD23 antibody [SP23]
(ab16702)

This image was generated using a previous batch manufactured using hybridoma production method.

Flow cytometric analysis of rabbit anti-CD23 (SP23) antibody ab16702 (1/100) in Jurkats (green) compared to negative control of rabbit IgG (blue).



Western blot - Anti-CD23 antibody [SP23] (ab16702)

Anti-CD23 antibody [SP23] (ab16702) at 1/25 dilution + lysate prepared from Raji cells

Observed band size: 45 kDa

This image was generated using a previous batch manufactured using hybridoma production method.

Please note: All products are "FOR RESEARCH USE ONLY. NOT FOR USE IN DIAGNOSTIC PROCEDURES"

Our Abpromise to you: Quality guaranteed and expert technical support

- Replacement or refund for products not performing as stated on the datasheet
- Valid for 12 months from date of delivery
- Response to your inquiry within 24 hours
- We provide support in Chinese, English, French, German, Japanese and Spanish
- Extensive multi-media technical resources to help you
- We investigate all quality concerns to ensure our products perform to the highest standards

If the product does not perform as described on this datasheet, we will offer a refund or replacement. For full details of the Abpromise, please visit <https://www.abcam.cn/abpromise> or contact our technical team.

Terms and conditions

- Guarantee only valid for products bought direct from Abcam or one of our authorized distributors