

### Anti-CD21 antibody [Bu32] ab54253

[2 References](#) [1 图像](#)

#### 概述

---

<b>产品名称</b>	Anti-CD21抗体[Bu32]
<b>描述</b>	小鼠单克隆抗体[Bu32] to CD21
<b>宿主</b>	Mouse
<b>经测试应用</b>	<b>适用于:</b> Flow Cyt <b>不适用于:</b> IHC-P
<b>种属反应性</b>	<b>与反应:</b> Human
<b>免疫原</b>	Tissue, cells or virus corresponding to Human CD21. Myeloma cell line Rob
<b>常规说明</b>	<p>The Life Science industry has been in the grips of a reproducibility crisis for a number of years. Abcam is leading the way in addressing this with our range of recombinant monoclonal antibodies and knockout edited cell lines for gold-standard validation. Please check that this product meets your needs before purchasing.</p> <p>If you have any questions, special requirements or concerns, please send us an inquiry and/or contact our Support team ahead of purchase. Recommended alternatives for this product can be found below, along with publications, customer reviews and Q&amp;As</p>

#### 性能

---

<b>形式</b>	Liquid
<b>存放说明</b>	Shipped at 4°C. Store at +4°C short term (1-2 weeks). Upon delivery aliquot. Store at -20°C long term.
<b>存储溶液</b>	Preservative: 0.02% Sodium azide Constituent: 99.98% PBS
<b>纯度</b>	Protein A purified
<b>克隆</b>	单克隆
<b>克隆编号</b>	Bu32
<b>骨髓瘤</b>	NS0
<b>同种型</b>	IgG1

#### 应用

---

“应用说明”部分下显示的仅为推荐的起始稀释度;实际最佳的稀释度/浓度应由使用者检定。

应用	Ab评论	说明
Flow Cyt		<p>Use 0.1µg for 10<sup>6</sup> cells. 1/50 - 1/200. Use 10µl of the suggested working dilution to label 1x10<sup>6</sup> cells in 100µl.</p> <p><b>ab170190</b> - Mouse monoclonal IgG1, is suitable for use as an isotype control with this antibody.</p>

## 应用说明

Is unsuitable for IHC-P.

## 靶标

## 功能

Receptor for complement C3Dd, for the Epstein-Barr virus on human B-cells and T-cells and for HNRPU. Participates in B lymphocytes activation.

## 组织特异性

Mature B-lymphocytes, T-lymphocytes, pharyngeal epithelial cells, astrocytes and follicular dendritic cells of the spleen.

## 疾病相关

Genetic variations in CR2 are associated with susceptibility to systemic lupus erythematosus type 9 (SLEB9) [MIM:610927]. Systemic lupus erythematosus (SLE) is a chronic autoimmune disease with a complex genetic basis. SLE is an inflammatory, and often febrile multisystemic disorder of connective tissue characterized principally by involvement of the skin, joints, kidneys, and serosal membranes. It is thought to represent a failure of the regulatory mechanisms of the autoimmune system.

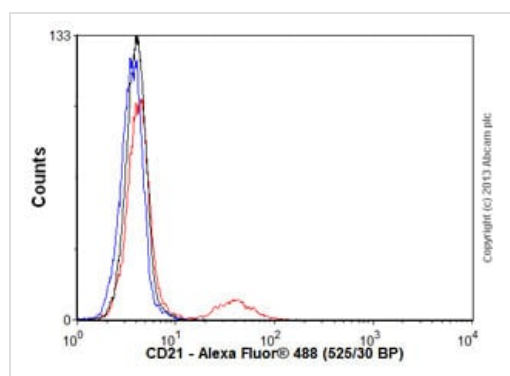
## 序列相似性

Belongs to the receptors of complement activation (RCA) family.  
Contains 15 Sushi (CCP/SCR) domains.

## 细胞定位

Membrane.

## 图片



Flow Cytometry - Anti-CD21 antibody [Bu32]  
(ab54253)

Human peripheral blood lymphocytes stained with ab54253 (red line). Human whole blood was processed using a modified protocol based on Chow *et al*, 2005 (PMID: 16080188). In brief, human whole blood was fixed in 4% formaldehyde (methanol-free) for 10 min at 22°C. Red blood cells were then lysed by the addition of Triton X-100 (final concentration - 0.1%) for 15 min at 37°C. For experimentation, cells were treated with 50% methanol (-20°C) for 15 min at 4°C. Cells were then incubated with the antibody (ab54253, 0.1µg/1x10<sup>6</sup> cells) for 30 min at 4°C. The secondary antibody used was Alexa Fluor® 488 goat anti-mouse IgG (H&L) (**ab150113**) at 1/2000 dilution for 30 min at 4°C. Isotype control antibody (black line) was mouse IgG1 [ICIGG1] (**ab91353**, 0.1µg/1x10<sup>6</sup> cells) used under the same conditions. Unlabelled

sample (blue line) was also used as a control. Acquisition of >30,000 total events were collected using a 20mW Argon ion laser (488nm) and 525/30 bandpass filter. Gating strategy - peripheral blood lymphocytes.

**Please note:** All products are "FOR RESEARCH USE ONLY. NOT FOR USE IN DIAGNOSTIC PROCEDURES"

### **Our Abpromise to you: Quality guaranteed and expert technical support**

---

- Replacement or refund for products not performing as stated on the datasheet
- Valid for 12 months from date of delivery
- Response to your inquiry within 24 hours
  
- We provide support in Chinese, English, French, German, Japanese and Spanish
- Extensive multi-media technical resources to help you
- We investigate all quality concerns to ensure our products perform to the highest standards

If the product does not perform as described on this datasheet, we will offer a refund or replacement. For full details of the Abpromise, please visit <https://www.abcam.cn/abpromise> or contact our technical team.

### **Terms and conditions**

---

- Guarantee only valid for products bought direct from Abcam or one of our authorized distributors