

Anti-CD209 antibody [ER-TR9] ab37220

★★★★★ [2 Abreviews](#) [4 References](#) [1 图像](#)

概述

产品名称	Anti-CD209抗体[ER-TR9]
描述	大鼠单克隆抗体[ER-TR9] to CD209
宿主	Rat
经测试应用	适用于: Flow Cyt, IHC-Fr, Blocking
种属反应性	与反应: Mouse
免疫原	Tissue, cells or virus corresponding to CD209. Mouse thymic stromal cells
阳性对照	Peritoneal macrophages
常规说明	<p>The Life Science industry has been in the grips of a reproducibility crisis for a number of years. Abcam is leading the way in addressing this with our range of recombinant monoclonal antibodies and knockout edited cell lines for gold-standard validation. Please check that this product meets your needs before purchasing.</p> <p>If you have any questions, special requirements or concerns, please send us an inquiry and/or contact our Support team ahead of purchase. Recommended alternatives for this product can be found below, along with publications, customer reviews and Q&As</p>

性能

形式	Liquid
存放说明	Shipped at 4°C. Upon delivery aliquot and store at -20°C. Avoid freeze / thaw cycles.
存储溶液	Preservative: 0.02% Sodium azide Constituent: Tissue culture supernatant
纯度	Tissue culture supernatant
克隆	单克隆
克隆编号	ER-TR9
同种型	IgM

应用

The Abpromise guarantee

Abpromise™ 承诺保证使用ab37220于以下的经测试应用

“应用说明”部分 下显示的仅为推荐的起始稀释度;实际最佳的稀释度/浓度应由使用者检定。

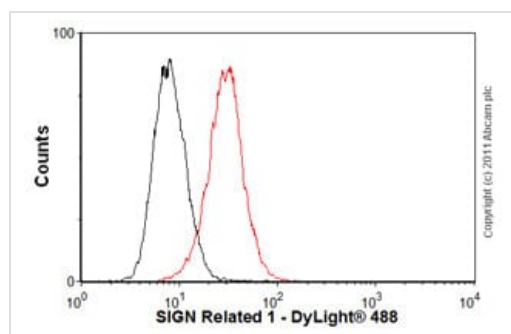
应用	Ab评论	说明
Flow Cyt		Use 2µg for 10 ⁶ cells. ab35768 - Rat monoclonal IgM, is suitable for use as an isotype control with this antibody.
IHC-Fr	★★★★★ (2)	Use at an assay dependent concentration.
Blocking		Use at an assay dependent concentration. Dilutions have to be made according to the amounts of SIGN-R1 to be inactivated.

靶标

相关性 SIGN R1 is a specific marker for the identification of macrophage subpopulations present in the marginal zone of spleen (the so-called marginal zone macrophages (MZM)), in the lymph node medulla, and in some strains, in the peritoneal cavity. MZM of the spleen are involved in the clearance of polysaccharides. Mouse SIGN R1 is a C type lectin, like DC SIGN which is expressed on Human dendritic cells (DCs). However, Mmouse SIGN R1 itself is not expressed on DCs. SIGN R1 exists in an aggregated form, resistant to dissociation into monomers upon boiling in SDS under reducing conditions. SIGN R1 mediates the uptake of encapsulated organisms and may be an important mediator for the uptake of microbes in both spleen and lymph node, particularly through the recognition of microbial polysaccharides.

细胞定位 Single-pass type II membrane protein

图片



Flow Cytometry - Anti-CD209 antibody [ER-TR9] (ab37220)

Overlay histogram showing SP0/2 cells stained with ab37220 (red line). The cells were fixed with 4% paraformaldehyde (10min) and incubated in 1x PBS / 10% normal goat serum / 0.3M glycine to block non-specific protein-protein interactions. The cells were then incubated with the antibody (ab37220, 2µg/1x10⁶ cells) for 30 min at 22°C. The secondary antibody used was DyLight® 488 goat anti-rat IgG (H+L) (**ab98386**) at 1/500 dilution for 30 min at 22°C. Isotype control antibody (black line) was rat IgM, kappa monoclonal [RTK2118] (**ab35768**, 2µg/1x10⁶ cells) used under the same conditions. Acquisition of >5,000 events was performed. This antibody gave a positive signal in SP0/2 cells fixed with 80% methanol (5 min) used under the same conditions. Please note that Abcam do not have any data for use of this antibody on non-fixed cells. We welcome any customer feedback.

Please note: All products are "FOR RESEARCH USE ONLY. NOT FOR USE IN DIAGNOSTIC PROCEDURES"

Our Abpromise to you: Quality guaranteed and expert technical support

- Replacement or refund for products not performing as stated on the datasheet
- Valid for 12 months from date of delivery
- Response to your inquiry within 24 hours

- We provide support in Chinese, English, French, German, Japanese and Spanish
- Extensive multi-media technical resources to help you
- We investigate all quality concerns to ensure our products perform to the highest standards

If the product does not perform as described on this datasheet, we will offer a refund or replacement. For full details of the Abpromise, please visit <https://www.abcam.cn/abpromise> or contact our technical team.

Terms and conditions

- Guarantee only valid for products bought direct from Abcam or one of our authorized distributors