

### Anti-CD208 antibody ab111090

[9 References](#) [1 图像](#)

#### 概述

---

<b>产品名称</b>	Anti-CD208抗体
<b>描述</b>	兔多克隆抗体to CD208
<b>宿主</b>	Rabbit
<b>经测试应用</b>	<b>适用于:</b> IHC-P
<b>种属反应性</b>	<b>与反应:</b> Human
<b>免疫原</b>	Synthetic peptide corresponding to Human CD208 (internal sequence).
<b>阳性对照</b>	Human lung carcinoma tissue.
<b>常规说明</b>	<p>The Life Science industry has been in the grips of a reproducibility crisis for a number of years. Abcam is leading the way in addressing this with our range of recombinant monoclonal antibodies and knockout edited cell lines for gold-standard validation. Please check that this product meets your needs before purchasing.</p> <p>If you have any questions, special requirements or concerns, please send us an inquiry and/or contact our Support team ahead of purchase. Recommended alternatives for this product can be found below, along with publications, customer reviews and Q&amp;As</p>

#### 性能

---

<b>形式</b>	Liquid
<b>存放说明</b>	Shipped at 4°C. Store at -20°C. Stable for 12 months at -20°C.
<b>存储溶液</b>	pH: 7.40 Preservative: 0.02% Sodium azide Constituents: 0.88% Sodium chloride, 50% Glycerol (glycerin, glycerine), 49.1% PBS  PBS (without Mg <sup>2+</sup> and Ca <sup>2+</sup> )
<b>纯度</b>	Immunogen affinity purified
<b>纯化说明</b>	ab111090 was affinity-purified from Rabbit antiserum by affinity-chromatography using epitope-specific immunogen.
<b>克隆</b>	多克隆
<b>同种型</b>	IgG

## 应用

### The Abpromise guarantee

**Abpromise™**承诺保证使用ab111090于以下的经测试应用

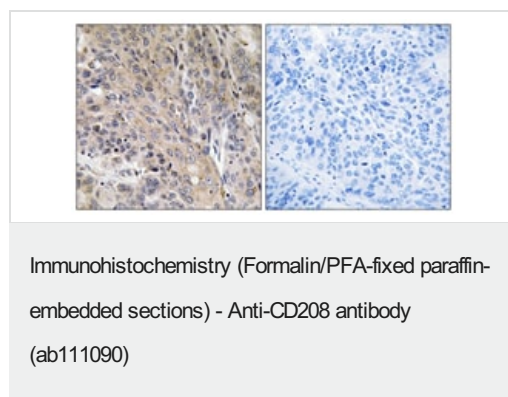
“应用说明”部分下显示的仅为推荐的起始稀释度;实际最佳的稀释度/浓度应由使用者检定。

应用	Ab评论	说明
IHC-P		1/50 - 1/100. Perform heat mediated antigen retrieval with citrate buffer pH 6 before commencing with IHC staining protocol.

## 靶标

功能	Might change the lysosome function after the transfer of peptide-MHC class II molecules to the surface of dendritic cells.
组织特异性	Expressed in lymphoid organs and dendritic cells. Expressed in lung. Up-regulated in carcinomas of the esophagus, colon, rectum, ureter, stomach, breast, fallopian tube, thyroid and parotid tissues.
序列相似性	Belongs to the LAMP family.
细胞定位	Lysosome membrane.

## 图片



ab111090 at 1/50 dilution staining CD208 in paraffin-embedded Human Lung carcinoma tissue by Immunohistochemistry. The image on the right is treated with the synthesized peptide.

**Please note:** All products are "FOR RESEARCH USE ONLY. NOT FOR USE IN DIAGNOSTIC PROCEDURES"

### Our Abpromise to you: Quality guaranteed and expert technical support

- Replacement or refund for products not performing as stated on the datasheet
- Valid for 12 months from date of delivery
- Response to your inquiry within 24 hours
- We provide support in Chinese, English, French, German, Japanese and Spanish
- Extensive multi-media technical resources to help you
- We investigate all quality concerns to ensure our products perform to the highest standards

If the product does not perform as described on this datasheet, we will offer a refund or replacement. For full details of the Abpromise,

please visit <https://www.abcam.cn/abpromise> or contact our technical team.

## **Terms and conditions**

---

- Guarantee only valid for products bought direct from Abcam or one of our authorized distributors