

Anti-CD20 antibody, prediluted ab27092

2 图像

概述

产品名称	Anti-CD20抗体, prediluted
描述	兔多克隆抗体to CD20, prediluted
宿主	Rabbit
经测试应用	适用于: WB, IHC-P
种属反应性	与反应: Human
免疫原	Synthetic peptide within Human CD20 aa 250 to the C-terminus (C terminal). The exact sequence is proprietary. Database link: P11836
阳性对照	BJAB WCL and tonsil.
常规说明	<p>This product is FOR RESEARCH USE ONLY. For commercial use, please contact partnerships@abcam.com.</p> <p>The Life Science industry has been in the grips of a reproducibility crisis for a number of years. Abcam is leading the way in addressing this with our range of recombinant monoclonal antibodies and knockout edited cell lines for gold-standard validation. Please check that this product meets your needs before purchasing.</p> <p>If you have any questions, special requirements or concerns, please send us an inquiry and/or contact our Support team ahead of purchase. Recommended alternatives for this product can be found below, along with publications, customer reviews and Q&As</p>

性能

形式	Liquid
存放说明	Shipped at 4°C. Store at +4°C.
存储溶液	pH: 7.60 Preservative: 0.1% Sodium azide Constituents: Tris buffered saline, 1% BSA
纯度	Immunogen affinity purified
克隆	多克隆
同种型	IgG

应用

The Abpromise guarantee **Abpromise™**承诺保证使用ab27092于以下的经测试应用

“应用说明”部分 下显示的仅为推荐的起始稀释度;实际最佳的稀释度/浓度应由使用者检定。

应用	Ab评论	说明
WB		1/1. Predicted molecular weight: 33 kDa.
IHC-P		1/1. Do not perform antigen retrieval. Incubation time is 10 minute at room temperature and the staining is cytoplasmic and on the cell membrane. Not yet tested in other applications. Optimal dilutions/concentrations should be determined by the end user.

靶标

功能 This protein may be involved in the regulation of B-cell activation and proliferation.

组织特异性 Expressed on B-cells.

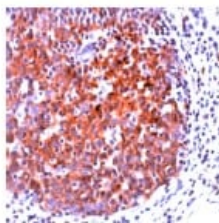
疾病相关 Defects in MS4A1 are the cause of immunodeficiency common variable type 5 (CVID5) [MIM:613495]; also called antibody deficiency due to CD20 defect. CVID5 is a primary immunodeficiency characterized by antibody deficiency, hypogammaglobulinemia, recurrent bacterial infections and an inability to mount an antibody response to antigen. The defect results from a failure of B-cell differentiation and impaired secretion of immunoglobulins; the numbers of circulating B cells is usually in the normal range, but can be low.

序列相似性 Belongs to the MS4A family.

翻译后修饰 Phosphorylated. Might be functionally regulated by protein kinase(s).

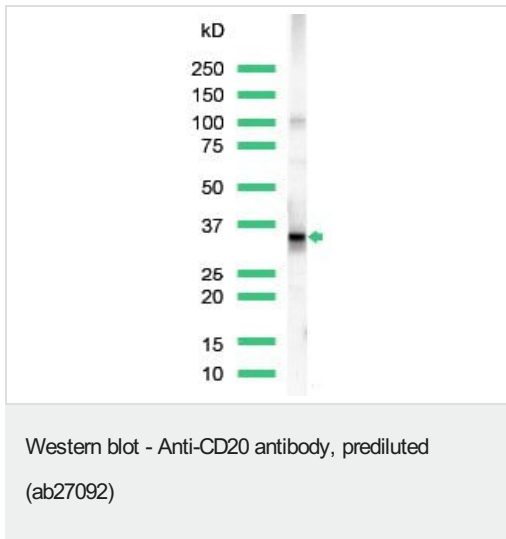
细胞定位 Membrane.

图片



Formalin fixed, paraffin embedded human tonsil tissue slide stained with anti CD20 antibody (ab27092).

Immunohistochemistry (Formalin/PFA-fixed paraffin-embedded sections) - Anti-CD20 antibody, prediluted (ab27092)



Anti-CD20 antibody (**ab27093**) at 1/25 dilution + Raji cell lysate

Predicted band size: 33 kDa

Observed band size: 35 kDa

Please note: All products are "FOR RESEARCH USE ONLY. NOT FOR USE IN DIAGNOSTIC PROCEDURES"

Our Abpromise to you: Quality guaranteed and expert technical support

- Replacement or refund for products not performing as stated on the datasheet
- Valid for 12 months from date of delivery
- Response to your inquiry within 24 hours
- We provide support in Chinese, English, French, German, Japanese and Spanish
- Extensive multi-media technical resources to help you
- We investigate all quality concerns to ensure our products perform to the highest standards

If the product does not perform as described on this datasheet, we will offer a refund or replacement. For full details of the Abpromise, please visit <https://www.abcam.cn/abpromise> or contact our technical team.

Terms and conditions

- Guarantee only valid for products bought direct from Abcam or one of our authorized distributors