

Anti-CD20 antibody [MEM-97] ab8237

[3 References](#) [4 图像](#)

概述

产品名称	Anti-CD20抗体[MEM-97]
描述	小鼠单克隆抗体[MEM-97] to CD20
宿主	Mouse
经测试应用	适用于: Flow Cyt, IP
种属反应性	与反应: Dog, Human, Pig
免疫原	Tissue, cells or virus corresponding to Human CD20. Burkitt's lymphoma cell line Raji.
常规说明	<p>This product was changed from ascites to tissue culture supernatant. Please note that the dilutions may need to be adjusted accordingly. If you have any questions, please do not hesitate to contact our scientific support team.</p> <p>The Life Science industry has been in the grips of a reproducibility crisis for a number of years. Abcam is leading the way in addressing this with our range of recombinant monoclonal antibodies and knockout edited cell lines for gold-standard validation. Please check that this product meets your needs before purchasing.</p> <p>If you have any questions, special requirements or concerns, please send us an inquiry and/or contact our Support team ahead of purchase. Recommended alternatives for this product can be found below, along with publications, customer reviews and Q&As</p>

性能

形式	Liquid
存放说明	Shipped at 4°C. Store at +4°C short term (1-2 weeks). Upon delivery aliquot. Store at -20°C or -80°C. Avoid freeze / thaw cycle.
存储溶液	<p>pH: 7.40</p> <p>Preservative: 0.097% Sodium azide</p> <p>Constituent: PBS</p>
纯度	Protein A purified
纯化说明	Purified from TCS
克隆	单克隆
克隆编号	MEM-97
同种型	IgG1

轻链类型

unknown

应用

The Abpromise guarantee

Abpromise™承诺保证使用ab8237于以下的经测试应用

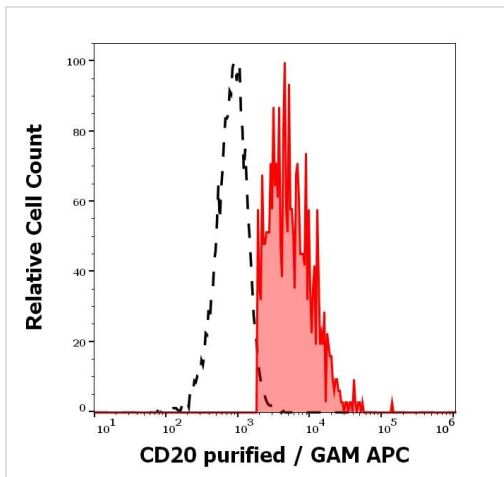
“应用说明”部分 下显示的仅为推荐的起始稀释度;实际最佳的稀释度/浓度应由使用者检定。

应用	Ab评论	说明
Flow Cyt		Use a concentration of 1 - 5 µg/ml. ab170190 - Mouse monoclonal IgG1, is suitable for use as an isotype control with this antibody.
IP		Use at an assay dependent concentration.

靶标

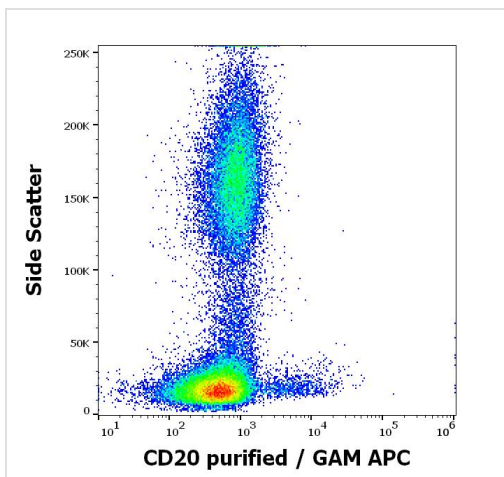
功能	This protein may be involved in the regulation of B-cell activation and proliferation.
组织特异性	Expressed on B-cells.
疾病相关	Defects in MS4A1 are the cause of immunodeficiency common variable type 5 (CVID5) [MIM:613495]; also called antibody deficiency due to CD20 defect. CVID5 is a primary immunodeficiency characterized by antibody deficiency, hypogammaglobulinemia, recurrent bacterial infections and an inability to mount an antibody response to antigen. The defect results from a failure of B-cell differentiation and impaired secretion of immunoglobulins; the numbers of circulating B cells is usually in the normal range, but can be low.
序列相似性	Belongs to the MS4A family.
翻译后修饰	Phosphorylated. Might be functionally regulated by protein kinase(s).
细胞定位	Membrane.

图片



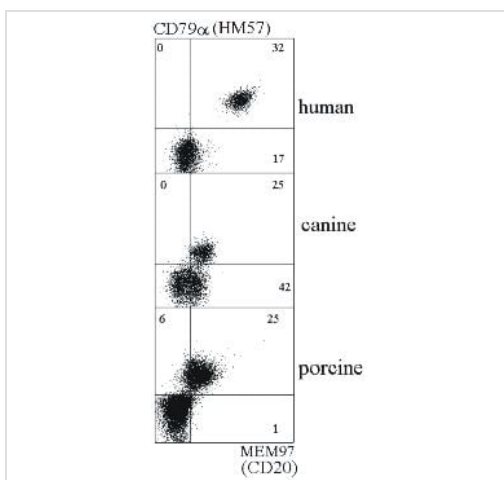
Separation of human CD20 positive lymphocytes (red-filled) from neutrophil granulocytes (black-dashed) in flow cytometry analysis (surface staining) of human peripheral whole blood stained using ab8237 (concentration in sample 1.6 µg/ml) GAM APC.

Flow Cytometry - Anti-CD20 antibody [MEM-97]
(ab8237)



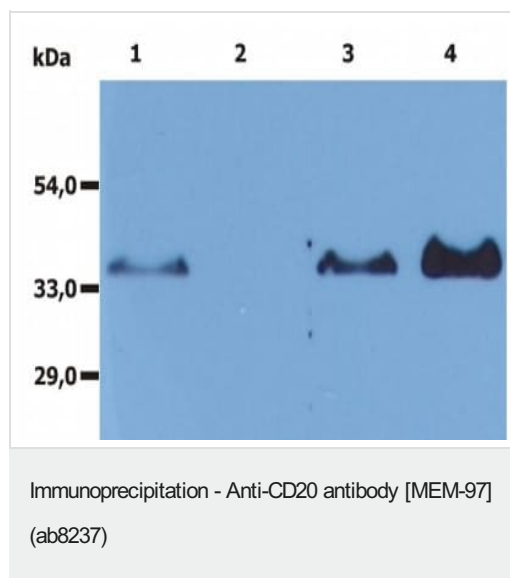
Flow cytometry surface staining pattern of human peripheral whole blood stained using ab8237 (concentration in sample 1.6 µg/ml) GAM APC.

Flow Cytometry - Anti-CD20 antibody [MEM-97]
(ab8237)



Double Immunostaining of CD20 and CD79a in human, canine and porcine B lymphocytes using ab8237 and [ab76908](#) by Flow Cytometry.

Flow Cytometry - Anti-CD20 antibody [MEM-97]
(ab8237)



Immunoprecipitation of human CD20 from the whole cell lysate of RAJI human Burkitt lymphoma cell line. Western blot was immunostained with anti-CD20 rabbit polyclonal antibody. Lane 1: original lysate of RAJI cells Lane 2: immunoprecipitate by Isotypic mouse IgG1 control Lane 3: original lysate of RAJI cells Lane 4: immunoprecipitate by anti-CD20 (MEM-97, ab 8237)

Please note: All products are "FOR RESEARCH USE ONLY. NOT FOR USE IN DIAGNOSTIC PROCEDURES"

Our Abpromise to you: Quality guaranteed and expert technical support

- Replacement or refund for products not performing as stated on the datasheet
- Valid for 12 months from date of delivery
- Response to your inquiry within 24 hours
- We provide support in Chinese, English, French, German, Japanese and Spanish
- Extensive multi-media technical resources to help you
- We investigate all quality concerns to ensure our products perform to the highest standards

If the product does not perform as described on this datasheet, we will offer a refund or replacement. For full details of the Abpromise, please visit <https://www.abcam.cn/abpromise> or contact our technical team.

Terms and conditions

- Guarantee only valid for products bought direct from Abcam or one of our authorized distributors