

Anti-CD1d antibody [WTH1] ab119846

[1 References](#) [1 图像](#)

概述

产品名称	Anti-CD1d抗体[WTH1]
描述	小鼠单克隆抗体[WTH1] to CD1d
宿主	Mouse
特异性	ab119846 cross reacts weakly with Mouse tissue in IHC and WB, but reacts strongly with both Rat and Mouse antigens in FC and IP.
经测试应用	适用于: IHC-Fr
种属反应性	与反应: Rat
免疫原	Tissue, cells or virus corresponding to Rat CD1d. Rat CD1d-transduced M12.4.1.C3 cells.
阳性对照	LEW Rat spleen tissue.
常规说明	<p>The Life Science industry has been in the grips of a reproducibility crisis for a number of years. Abcam is leading the way in addressing this with our range of recombinant monoclonal antibodies and knockout edited cell lines for gold-standard validation. Please check that this product meets your needs before purchasing.</p> <p>If you have any questions, special requirements or concerns, please send us an inquiry and/or contact our Support team ahead of purchase. Recommended alternatives for this product can be found below, along with publications, customer reviews and Q&As</p>

性能

形式	Liquid
存放说明	Shipped at 4°C. Store at -20°C or -80°C. Avoid freeze / thaw cycle. Store undiluted.
存储溶液	Preservative: 0.02% Sodium azide Constituent: 99% PBS
纯度	Immunogen affinity purified
纯化说明	ab119846 is purified.
克隆	单克隆
克隆编号	WTH1
同种型	IgG2a

应用

The Abpromise guarantee **Abpromise™**承诺保证使用ab119846于以下的经测试应用

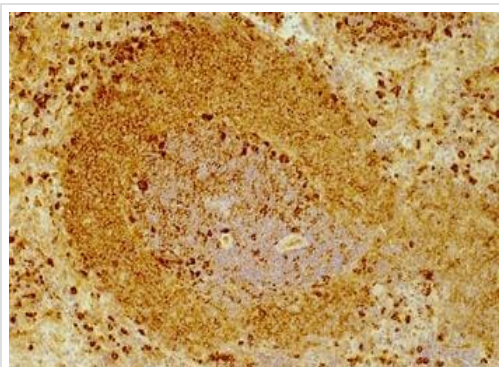
“应用说明”部分 下显示的仅为推荐的起始稀释度;实际最佳的稀释度/浓度应由使用者检定。

应用	Ab评论	说明
IHC-Fr		Use at an assay dependent concentration.

靶标

功能	Antigen-presenting protein that binds self and non-self glycolipids and presents them to T-cell receptors on natural killer T-cells.
组织特异性	Expressed on cortical thymocytes, on certain T-cell leukemias, and in various other tissues.
序列相似性	Contains 1 Ig-like (immunoglobulin-like) domain.
细胞定位	Cell membrane. Endosome membrane. Lysosome membrane. Subject to intracellular trafficking between the cell membrane, endosomes and lysosomes.

图片



Immunoperoxidase staining of LEW Rat spleen follicle using ab119846.

Immunohistochemistry (Frozen sections) - Anti-CD1d antibody [WTH1] (ab119846)

Please note: All products are "FOR RESEARCH USE ONLY. NOT FOR USE IN DIAGNOSTIC PROCEDURES"

Our Abpromise to you: Quality guaranteed and expert technical support

- Replacement or refund for products not performing as stated on the datasheet
- Valid for 12 months from date of delivery
- Response to your inquiry within 24 hours
- We provide support in Chinese, English, French, German, Japanese and Spanish
- Extensive multi-media technical resources to help you
- We investigate all quality concerns to ensure our products perform to the highest standards

If the product does not perform as described on this datasheet, we will offer a refund or replacement. For full details of the Abpromise, please visit <https://www.abcam.cn/abpromise> or contact our technical team.

Terms and conditions

- Guarantee only valid for products bought direct from Abcam or one of our authorized distributors