



Anti-CD18 antibody [2E6] ab119347

4 References 1 图像

概述	
产品名称	Anti-CD18抗体[2E6]
描述	仓鼠单克隆抗体[2E6] to CD18
宿主	Hamster
经测试应用	适用于: Flow Cyt
种属反应性	与反应: Mouse
免疫原	Full length protein corresponding to Human CD18 aa 1-100. Native protein  <a href="#">Run BLAST with ExPASy</a>  <a href="#">Run BLAST with NCBI</a>
阳性对照	Flow Cyt: Recombinant Human CD18 protein ( <a href="#">ab114283</a> ) can be used as a positive control in WB.
常规说明	<p>The Life Science industry has been in the grips of a reproducibility crisis for a number of years. Abcam is leading the way in addressing this with our range of recombinant monoclonal antibodies and knockout edited cell lines for gold-standard validation. Please check that this product meets your needs before purchasing.</p> <p>If you have any questions, special requirements or concerns, please send us an inquiry and/or contact our Support team ahead of purchase. Recommended alternatives for this product can be found below, along with publications, customer reviews and Q&amp;As</p>
性能	
形式	Liquid
存放说明	Shipped at 4°C. Store at -20°C.
存储溶液	Constituent: 99% PBS
纯度	Protein A purified
克隆	单克隆
克隆编号	2E6
同种型	IgG
应用	

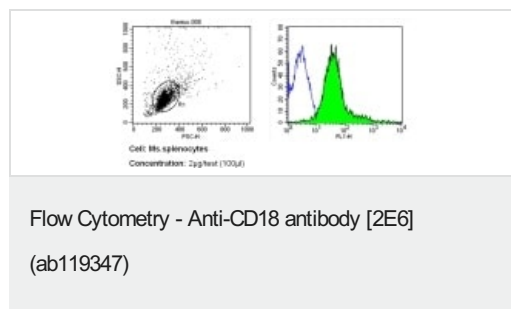
“应用说明”部分 下显示的仅为推荐的起始稀释度;实际最佳的稀释度/浓度应由使用者检定。

应用	Ab评论	说明
Flow Cyt		Use at an assay dependent concentration. <b>ab18474</b> - Armenian Hamster monoclonal IgG, is suitable for use as an isotype control with this antibody.

## 靶标

功能	Integrin alpha-L/beta-2 is a receptor for ICAM1, ICAM2, ICAM3 and ICAM4. Integrins alpha-M/beta-2 and alpha-X/beta-2 are receptors for the iC3b fragment of the third complement component and for fibrinogen. Integrin alpha-X/beta-2 recognizes the sequence G-P-R in fibrinogen alpha-chain. Integrin alpha-M/beta-2 recognizes P1 and P2 peptides of fibrinogen gamma chain. Integrin alpha-M/beta-2 is also a receptor for factor X. Integrin alpha-D/beta-2 is a receptor for ICAM3 and VCAM1.
疾病相关	Defects in ITGB2 are the cause of leukocyte adhesion deficiency type 1 (LAD1) [MIM:116920]. LAD1 patients have recurrent bacterial infections and their leukocytes are deficient in a wide range of adhesion-dependent functions.
序列相似性	Belongs to the integrin beta chain family. Contains 1 VWFA domain.
翻译后修饰	Both Ser-745 and Ser-756 become phosphorylated when T-cells are exposed to phorbol esters. Phosphorylation on Thr-758 (but not on Ser-756) allows interaction with 14-3-3 proteins.
细胞定位	Membrane.

## 图片



Flow cytometry analysis of CD18 in mouse splenocytes (green) compared to an isotype control (blue). Human blood was collected, combined with a hydrophilic polysaccharide, centrifuged, transferred to a conical tube and washed with PBS. 50 ul of cell solution was added to each tube at a dilution of  $2 \times 10^7$  cells/ml, followed by the addition of 50 ul of isotype control and primary antibody (ab119347) at a dilution of 2 ug/test. Cells were incubated for 30 min at 4°C and washed with a cell buffer, followed by incubation with a DyLight 488-conjugated secondary antibody for 30 min at 4°C in the dark. FACS analysis was performed using 400 ul of cell buffer.

**Please note:** All products are "FOR RESEARCH USE ONLY. NOT FOR USE IN DIAGNOSTIC PROCEDURES"

## Our Abpromise to you: Quality guaranteed and expert technical support

- Replacement or refund for products not performing as stated on the datasheet

- Valid for 12 months from date of delivery
- Response to your inquiry within 24 hours
- We provide support in Chinese, English, French, German, Japanese and Spanish
- Extensive multi-media technical resources to help you
- We investigate all quality concerns to ensure our products perform to the highest standards

If the product does not perform as described on this datasheet, we will offer a refund or replacement. For full details of the Abpromise, please visit <https://www.abcam.cn/abpromise> or contact our technical team.

#### **Terms and conditions**

---

- Guarantee only valid for products bought direct from Abcam or one of our authorized distributors