

Anti-CD16 antibody [KD1] ab124049

1 References **1 图像**

概述

产品名称	Anti-CD16抗体[KD1]
描述	小鼠单克隆抗体[KD1] to CD16
宿主	Mouse
经测试应用	适用于: Flow Cyt
种属反应性	与反应: Human 不与反应: Rat, Dog
免疫原	The details of the immunogen for this antibody are not available.
阳性对照	Human peripheral blood lymphocytes
常规说明	ab124049 should be stored undiluted.

A number of studies have demonstrated that clone KD1 can be used to identify CD16 in a range of species including bovine and ovine.

The Life Science industry has been in the grips of a reproducibility crisis for a number of years. Abcam is leading the way in addressing this with our range of recombinant monoclonal antibodies and knockout edited cell lines for gold-standard validation. Please check that this product meets your needs before purchasing.

If you have any questions, special requirements or concerns, please send us an inquiry and/or contact our Support team ahead of purchase. Recommended alternatives for this product can be found below, along with publications, customer reviews and Q&As

性能

形式	Liquid
存放说明	Shipped at 4°C. Store at +4°C short term (1-2 weeks). Store at -20°C long term.
存储溶液	Preservative: 0.09% Sodium azide Constituent: 99% PBS
纯度	Protein G purified
Primary antibody说明	A number of studies have demonstrated that clone KD1 can be used to identify CD16 in a range of species including bovine and ovine.
克隆	单克隆

克隆编号	KD1
同种型	IgG2a

应用

The Abpromise guarantee **Abpromise™**承诺保证使用ab124049于以下的经测试应用

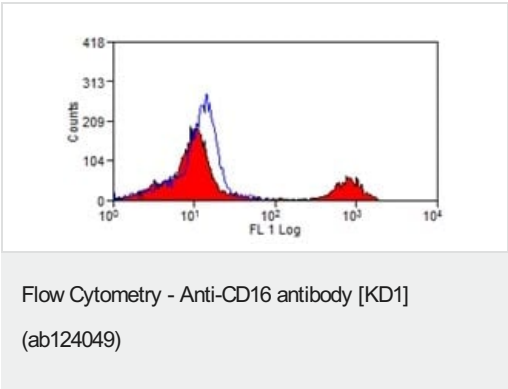
“应用说明”部分 下显示的仅为推荐的起始稀释度;实际最佳的稀释度/浓度应由使用者检定。

应用	Ab评论	说明
Flow Cyt		Use at an assay dependent concentration. Use 100 µl of the suggested working dilution to label 1x10 ⁶ cells in 100 µl. ab170191 - Mouse monoclonal IgG2a, is suitable for use as an isotype control with this antibody.

靶标

功能	Receptor for the Fc region of IgG. Binds complexed or aggregated IgG and also monomeric IgG. Mediates antibody-dependent cellular cytotoxicity (ADCC) and other antibody-dependent responses, such as phagocytosis.
组织特异性	Expressed on natural killer cells, macrophages, subpopulation of T-cells, immature thymocytes and placental trophoblasts.
序列相似性	Contains 2 Ig-like C2-type (immunoglobulin-like) domains.
翻译后修饰	Glycosylated. Contains high mannose- and complex-type oligosaccharides. The soluble form is produced by a proteolytic cleavage.
细胞定位	Cell membrane. Secreted. Exists also as a soluble receptor.

图片



ab124032 staining CD16 in Human peripheral blood lymphocytes by Flow Cytometry, followed by Rabbit F(ab')₂ anti Mouse IgG:FITC.

Please note: All products are "FOR RESEARCH USE ONLY. NOT FOR USE IN DIAGNOSTIC PROCEDURES"

Our Abpromise to you: Quality guaranteed and expert technical support

- Replacement or refund for products not performing as stated on the datasheet
- Valid for 12 months from date of delivery
- Response to your inquiry within 24 hours
- We provide support in Chinese, English, French, German, Japanese and Spanish
- Extensive multi-media technical resources to help you
- We investigate all quality concerns to ensure our products perform to the highest standards

If the product does not perform as described on this datasheet, we will offer a refund or replacement. For full details of the Abpromise, please visit <https://www.abcam.cn/abpromise> or contact our technical team.

Terms and conditions

- Guarantee only valid for products bought direct from Abcam or one of our authorized distributors