

Anti-CD15 antibody [MMA], prediluted ab7495

1 References 1 [图像](#)

概述	
产品名称	Anti-CD15抗体[MMA], prediluted
描述	小鼠单克隆抗体[MMA] to CD15, prediluted
宿主	Mouse
特异性	This antibody reacts with a 220 kD protein.
经测试应用	适用于: IHC-P
种属反应性	与反应: Human
免疫原	Tissue, cells or virus corresponding to Human CD15. U937 histiocytic cell line.
阳性对照	Tonsil.
常规说明	<p>The Life Science industry has been in the grips of a reproducibility crisis for a number of years. Abcam is leading the way in addressing this with our range of recombinant monoclonal antibodies and knockout edited cell lines for gold-standard validation. Please check that this product meets your needs before purchasing.</p> <p>If you have any questions, special requirements or concerns, please send us an inquiry and/or contact our Support team ahead of purchase. Recommended alternatives for this product can be found below, along with publications, customer reviews and Q&As</p>
性能	
形式	Liquid
存放说明	Shipped at 4°C. Store at +4°C short term (1-2 weeks). Store at -20°C or -80°C. Avoid freeze / thaw cycle.
存储溶液	pH: 7.3 Constituent: PBS
纯度	Protein A purified
克隆	单克隆
克隆编号	MMA
同种型	IgM
轻链类型	kappa

应用

The Abpromise guarantee **Abpromise™**承诺保证使用ab7495于以下的经测试应用

“应用说明”部分 下显示的仅为推荐的起始稀释度;实际最佳的稀释度/浓度应由使用者检定。

应用	Ab评论	说明
IHC-P		

应用说明

IHC-P: Use at an assay dependent dilution.
IHC-Fr: Use at an assay dependent dilution.
We suggest an incubation period of 30 minutes at room temperature. However, depending upon the fixation conditions and the staining system employed, optimal incubation should be determined by the end user. Formalin fixed paraffin embedded tissue sections require high temperature antigen unmasking with 10 mM citrate buffer, pH 6.0 prior to immunostaining.

Not tested in other applications.
Optimal dilutions/concentrations should be determined by the end user.

靶标

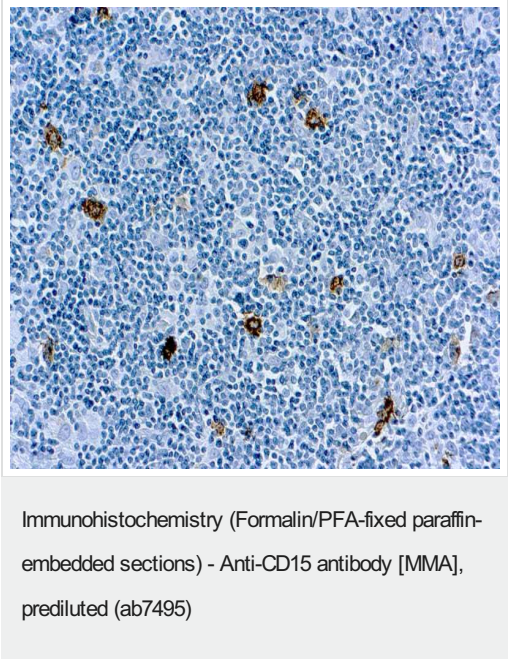
相关性

CD15 is a carbohydrate adhesion molecule (and not a protein) that mediates phagocytosis and chemotaxis. Synthesis is directed by FUT4 in lymphoid cells and mature granulocytes, and by FUT9 in promyelocytes and monocytes.

细胞定位

Golgi Apparatus; Membrane-bound form in trans cisternae of Golgi.

图片



Immunohistochemistry (Formalin fixed paraffin-embedded sections) analysis of human tonsil tissue labelling CD15 with ab7495.

Please note: All products are "FOR RESEARCH USE ONLY. NOT FOR USE IN DIAGNOSTIC PROCEDURES"

Our Abpromise to you: Quality guaranteed and expert technical support

- Replacement or refund for products not performing as stated on the datasheet
- Valid for 12 months from date of delivery
- Response to your inquiry within 24 hours

- We provide support in Chinese, English, French, German, Japanese and Spanish
- Extensive multi-media technical resources to help you
- We investigate all quality concerns to ensure our products perform to the highest standards

If the product does not perform as described on this datasheet, we will offer a refund or replacement. For full details of the Abpromise, please visit <https://www.abcam.cn/abpromise> or contact our technical team.

Terms and conditions

- Guarantee only valid for products bought direct from Abcam or one of our authorized distributors