

Anti-CD11b antibody [M1/70] ab8878

重组

★★★★★ 17 Abreviews 138 References 4 图像

概述

产品名称	Anti-CD11b抗体[M1/70]
描述	大鼠单克隆抗体[M1/70] to CD11b
宿主	Rat
经测试应用	适用于: ICC/IF, Flow Cyt 不适用于: IHC-P
种属反应性	与反应: Mouse, Human
免疫原	Tissue, cells or virus. This information is proprietary to Abcam and/or its suppliers.
阳性对照	Flow Cytometry: RAW 264.7 cells, Human peripheral blood mononuclear cell (PBMC), Mouse peripheral blood mononuclear cell (PBMC) IF/ICC: RAW 264.7 cells
常规说明	<p>This antibody clone is manufactured by Abcam. If you require a custom buffer formulation or conjugation for your experiments, please contact orders@abcam.com.</p> <p>This product is a recombinant monoclonal antibody, which offers several advantages including:</p> <ul style="list-style-type: none">- High batch-to-batch consistency and reproducibility- Improved sensitivity and specificity- Long-term security of supply- Animal-free production <p>For more information see here.</p>

性能

形式	Liquid
存放说明	Shipped at 4°C. Upon delivery aliquot and store at -20°C or -80°C. Avoid repeated freeze / thaw cycles.
存储溶液	pH: 7.2 Preservative: 0.01% Sodium azide Constituents: 59% PBS, 0.05% BSA, 40% Glycerol (glycerin, glycerine)
纯度	Protein A purified
克隆	单克隆
克隆编号	M1/70

骨髓瘤	NS1
同种型	IgG2b
轻链类型	unknown

应用

The Abpromise guarantee **Abpromise™**承诺保证使用ab8878于以下的经测试应用

“应用说明”部分 下显示的仅为推荐的起始稀释度;实际最佳的稀释度/浓度应由使用者检定。

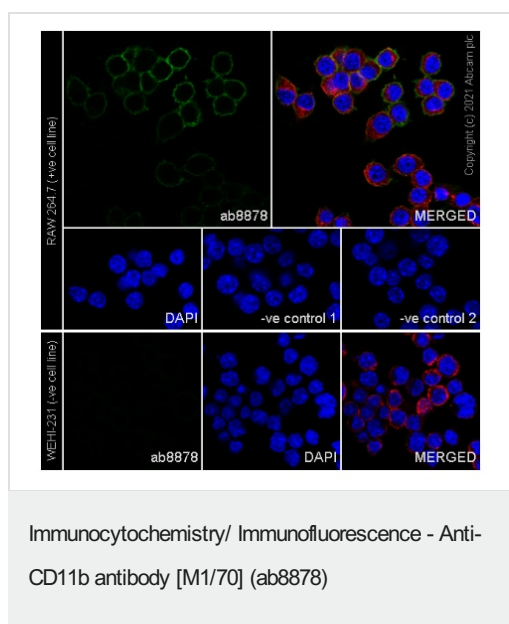
应用	Ab评论	说明
ICC/IF	★★★★★ (4)	1/50.
Flow Cyt	★★★★★ (2)	1/1000 - 1/10000. ab18536 - Rat monoclonal IgG2b, is suitable for use as an isotype control with this antibody.

应用说明 Is unsuitable for IHC-P.

靶标

功能	Integrin alpha-M/beta-2 is implicated in various adhesive interactions of monocytes, macrophages and granulocytes as well as in mediating the uptake of complement-coated particles. It is identical with CR-3, the receptor for the iC3b fragment of the third complement component. It probably recognizes the R-G-D peptide in C3b. Integrin alpha-M/beta-2 is also a receptor for fibrinogen, factor X and ICAM1. It recognizes P1 and P2 peptides of fibrinogen gamma chain.
组织特异性	Predominantly expressed in monocytes and granulocytes.
疾病相关	Genetic variations in ITGAM has been associated with susceptibility to systemic lupus erythematosus type 6 (SLEB6) [MIM:609939]. Systemic lupus erythematosus (SLE) is a chronic, inflammatory and often febrile multisystemic disorder of connective tissue. It affects principally the skin, joints, kidneys and serosal membranes. It is thought to represent a failure of the regulatory mechanisms of the autoimmune system.
序列相似性	Belongs to the integrin alpha chain family. Contains 7 FG-GAP repeats. Contains 1 VWFA domain.
结构域	The integrin I-domain (insert) is a VWFA domain. Integrins with I-domains do not undergo protease cleavage.
细胞定位	Membrane.

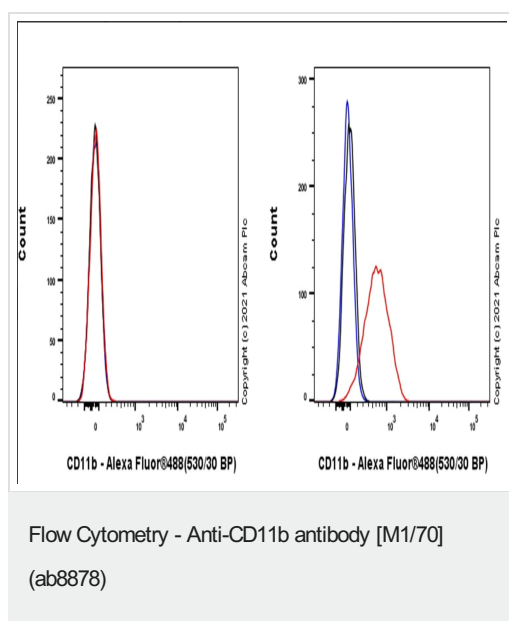
图片



Confocal image showing membranous staining in RAW 264.7 cells.

RAW 264.7, WEHI-231 and THP-1 cells were fixed in 4% PFA and permeabilized with 0.1% Triton X-100. Primary antibody, ab8878 at 1:50 was incubated overnight at 4° C, followed by AlexaFluor® 488-conjugated Goat anti-Rat secondary antibody ([ab150157](#)) at 1/1000 dilution at RT for 45 min. [ab179513](#) Anti-beta Tubulin, used as a counterstain at 1/200 dilution, was co-incubated with ab8878 overnight at 4° C, followed by Alexa Fluor® 594 Goat Anti-Rabbit secondary ([ab150080](#)) at 1/1000 dilution at RT for 45 min. Nucleus were visualized using DAPI.

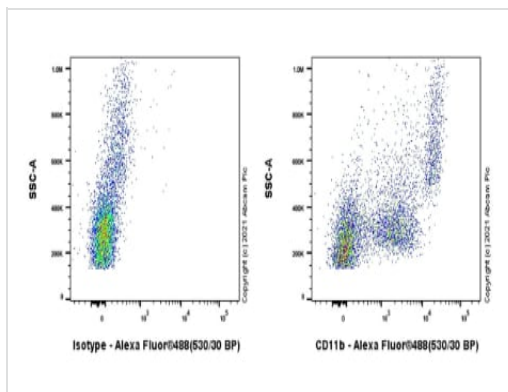
Negative control: WEHI-231 (PMID: 2457584)



Flow Cytometry analysis of WEHI-231 (Mouse B cell lymphoma B lymphocyte, Left) / RAW 264.7 (Mouse Abelson murine leukemia virus-induced tumor macrophage, Right) cells stained for CD11b using AB8878 at a 1/1000 dilution (0.1 µg) (Red) compared to Rat monoclonal IgG - Isotype Control (Black) and cells without incubation with primary antibody and secondary antibody (Blue). Goat F(ab)2 Anti-Rat IgG Fc (Alexa Fluor® 488, [ab150161](#)) at 1/2000 dilution was used as the secondary antibody.

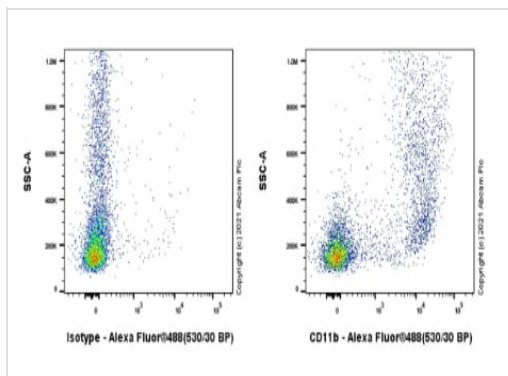
Negative control: WEHI-231.(PMID: 2457584)

Gated on viable cells.



Flow Cytometry - Anti-CD11b antibody [M1/70]
(ab8878)

Flow Cytometry analysis of Human peripheral blood mononuclear cell (PBMC) cells labelling CD11b with AB8878 at a 1/10,000 dilution (0.01 µg) (right) compared to Rat monoclonal IgG - Isotype Control (right). Goat F(ab)2 Anti-Rat IgG Fc (Alexa Fluor® 488, **ab150161**) at 1/2000 dilution was used as the secondary antibody. Gated on viable cells.



Flow Cytometry - Anti-CD11b antibody [M1/70]
(ab8878)

Flow Cytometry analysis of Mouse peripheral blood mononuclear cell (PBMC) cells labelling CD11b with AB8878 at a 1/10,000 dilution (0.01 µg) (right) compared to Rat monoclonal IgG - Isotype Control (right). Goat F(ab)2 Anti-Rat IgG Fc (Alexa Fluor® 488, **ab150161**) at 1/2000 dilution was used as the secondary antibody. Gated on viable cells.

Please note: All products are "FOR RESEARCH USE ONLY. NOT FOR USE IN DIAGNOSTIC PROCEDURES"

Our Abpromise to you: Quality guaranteed and expert technical support

- Replacement or refund for products not performing as stated on the datasheet
- Valid for 12 months from date of delivery
- Response to your inquiry within 24 hours
- We provide support in Chinese, English, French, German, Japanese and Spanish
- Extensive multi-media technical resources to help you
- We investigate all quality concerns to ensure our products perform to the highest standards

If the product does not perform as described on this datasheet, we will offer a refund or replacement. For full details of the Abpromise, please visit <https://www.abcam.cn/abpromise> or contact our technical team.

Terms and conditions

- Guarantee only valid for products bought direct from Abcam or one of our authorized distributors