

Anti-CD11b antibody [EPR19387] ab184308

重组 RabMAb

★★★★★ **1 Abreviews** **12 References** **5 图像**

概述

产品名称	Anti-CD11b抗体[EPR19387]
描述	兔单克隆抗体[EPR19387] to CD11b
宿主	Rabbit
经测试应用	适用于: WB, ICC/IF, IP, Flow Cyt
种属反应性	与反应: Mouse, Human
免疫原	Synthetic peptide. This information is proprietary to Abcam and/or its suppliers.
阳性对照	WB: J774A.1, M1 and RAW 264.7 whole cell lysates. ICC/IF: RAW 264.7 cells. Flow Cyt: RAW 264.7 cells. IP: RAW 264.7 whole cell lysate.
常规说明	<p>This product is a recombinant monoclonal antibody, which offers several advantages including:</p> <ul style="list-style-type: none"> - High batch-to-batch consistency and reproducibility - Improved sensitivity and specificity - Long-term security of supply - Animal-free production <p>For more information see here.</p> <p>Our RabMAb[®] technology is a patented hybridoma-based technology for making rabbit monoclonal antibodies. For details on our patents, please refer to RabMAb[®] patents.</p>

性能

形式	Liquid
存放说明	Shipped at 4°C. Store at +4°C short term (1-2 weeks). Upon delivery aliquot. Store at -20°C long term. Avoid freeze / thaw cycle.
存储溶液	<p>pH: 7.2</p> <p>Preservative: 0.01% Sodium azide</p> <p>Constituents: PBS, 40% Glycerol (glycerin, glycerine), 0.05% BSA</p>
纯度	Protein A purified
克隆	单克隆
克隆编号	EPR19387
同种型	IgG

应用

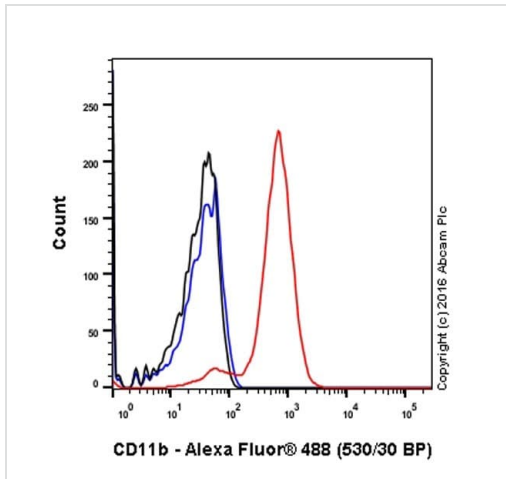
The Abpromise guarantee **Abpromise™**承诺保证使用ab184308于以下的经测试应用
“应用说明”部分 下显示的仅为推荐的起始稀释度;实际最佳的稀释度/浓度应由使用者检定。

应用	Ab评论	说明
WB		1/1000. Detects a band of approximately 170 kDa (predicted molecular weight: 127 kDa).
ICC/IF	★★★★★ (1)	1/500.
IP		1/40.
Flow Cyt		1/70.

靶标

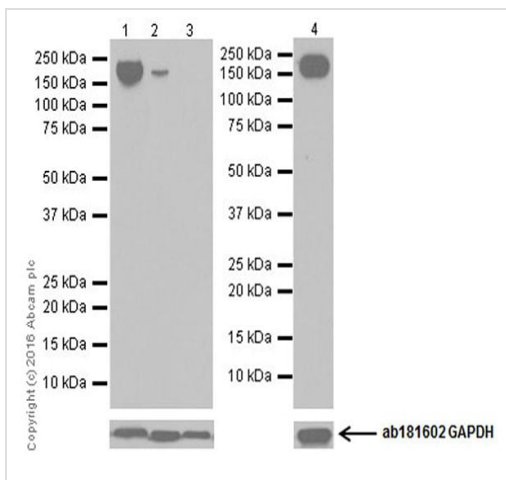
功能	Integrin alpha-M/beta-2 is implicated in various adhesive interactions of monocytes, macrophages and granulocytes as well as in mediating the uptake of complement-coated particles. It is identical with CR-3, the receptor for the iC3b fragment of the third complement component. It probably recognizes the R-G-D peptide in C3b. Integrin alpha-M/beta-2 is also a receptor for fibrinogen, factor X and ICAM1. It recognizes P1 and P2 peptides of fibrinogen gamma chain.
组织特异性	Predominantly expressed in monocytes and granulocytes.
疾病相关	Genetic variations in ITGAM has been associated with susceptibility to systemic lupus erythematosus type 6 (SLEB6) [MIM:609939]. Systemic lupus erythematosus (SLE) is a chronic, inflammatory and often febrile multisystemic disorder of connective tissue. It affects principally the skin, joints, kidneys and serosal membranes. It is thought to represent a failure of the regulatory mechanisms of the autoimmune system.
序列相似性	Belongs to the integrin alpha chain family. Contains 7 FG-GAP repeats. Contains 1 VWFA domain.
结构域	The integrin I-domain (insert) is a VWFA domain. Integrins with I-domains do not undergo protease cleavage.
细胞定位	Membrane.

图片



Flow Cytometry - Anti-CD11b antibody [EPR19387]
(ab184308)

Flow cytometric analysis of RAW 264.7 (Mouse macrophage cell line transformed with Abelson murine leukemia virus) cells labeling CD11b with ab184308 at 1/70 dilution (red) compared with a Rabbit IgG, monoclonal [EPR25A] -Isotype control ([ab172730](#)) (black) and an unlabelled control (cells without incubation with primary antibody and secondary antibody) (blue). Goat anti Rabbit IgG (Alexa Fluor® 488) at 1/2000 dilution was used as the secondary antibody.



Western blot - Anti-CD11b antibody [EPR19387]
(ab184308)

All lanes : Anti-CD11b antibody [EPR19387] (ab184308) at 1/1000 dilution

Lane 1 : J774A.1 (Mouse macrophage reticulum cell sarcoma cell line) whole cell lysate

Lane 2 : M1 (Mouse myeloblast myeloid leukemia cell line) whole cell lysate

Lane 3 : WEHI-231 (Mouse B cell lymphoma cell line) whole cell lysate

Lane 4 : RAW 264.7 (Mouse macrophage cell line transformed with Abelson murine leukemia virus) whole cell lysate

Lysates/proteins at 20 µg per lane.

Secondary

All lanes : Goat Anti-Rabbit IgG H&L (HRP) ([ab97051](#)) at 1/100000 dilution

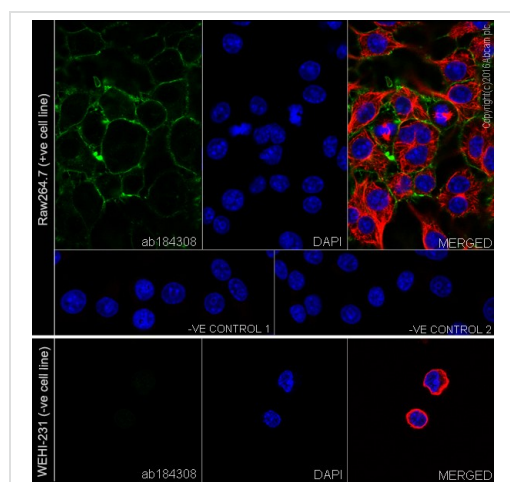
Predicted band size: 127 kDa

Observed band size: 170 kDa

Exposure time: 3 minutes

Blocking/Dilution buffer: 5% NFDM/TBST.

CD11b is a 170 kD glycoprotein also known as α M integrin, Mac-1 α subunit (PMID: 10603370). It is exclusively restricted to cells of the myeloid lineages and monocytes, but not in T or B cell lines, so WEHI-231 cell lysate serves as a negative control (PMID: 2457584).



Immunocytochemistry/ Immunofluorescence - Anti-CD11b antibody [EPR19387] (ab184308)

Immunofluorescent analysis of 100% methanol-fixed RAW 264.7 (Mouse macrophage cell line transformed with Abelson murine leukemia virus) and WEHI-231 (Mouse B cell lymphoma cell line) cells labeling CD11b with ab184308 at 1/500 dilution, followed by Goat Anti-Rabbit IgG (Alexa Fluor® 488) ([ab150077](#)) secondary antibody at 1/1,000 dilution (green).

Confocal image showing membrane staining on RAW 264.7 cells and no staining on WEHI-231 cells (negative cell line).

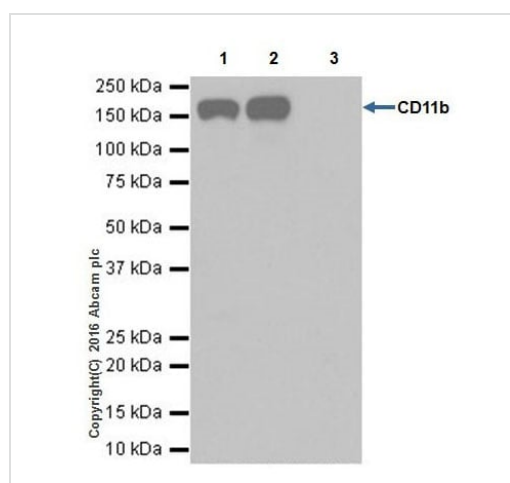
The nuclear counter stain is DAPI (blue).

Tubulin is detected with Anti-alpha Tubulin antibody [DM1A] - Loading Control ([ab7291](#)) at 1/1,000 dilution and Goat Anti-Mouse IgG H&L (Alexa Fluor® 594) preadsorbed ([ab150120](#)) at 1/1,000 dilution (red).

The negative controls are as follows:

-ve control 1: ab184308 at 1/500 dilution followed by [ab150120](#) at 1/1,000 dilution.

-ve control 2: [ab7291](#) at 1/1000 dilution followed by [ab150077](#) at 1/1,000 dilution.



Immunoprecipitation - Anti-CD11b antibody [EPR19387] (ab184308)

CD11b was immunoprecipitated from 0.35 mg of RAW 264.7 (Mouse macrophage cell line transformed with Abelson murine leukemia virus) whole cell lysate with ab184308 at 1/40 dilution. Western blot was performed from the immunoprecipitate using ab184308 at 1/1000 dilution. VeriBlot for IP Detection Reagent (HRP) ([ab131366](#)), was used for detection at 1/10000 dilution.

Lane 1: RAW 264.7 whole cell lysate, 10µg (Input).





Lane 2: ab184308 IP in RAW 264.7 whole cell lysate.

Lane 3: Rabbit IgG, monoclonal [EPR25A]- Isotype Control ([ab172730](#)) instead of ab184308 in RAW 264.7 whole cell lysate.

Blocking and dilution buffer and concentration: 5% NFDM/TBST.

Exposure time: 8 seconds.

Why choose a recombinant antibody?

 <p>Research with confidence Consistent and reproducible results</p>	 <p>Long-term and scalable supply Recombinant technology</p>
 <p>Success from the first experiment Confirmed specificity</p>	 <p>Ethical standards compliant Animal-free production</p>

Anti-CD11b antibody [EPR19387] (ab184308)

Please note: All products are "FOR RESEARCH USE ONLY. NOT FOR USE IN DIAGNOSTIC PROCEDURES"

Our Abpromise to you: Quality guaranteed and expert technical support

- Replacement or refund for products not performing as stated on the datasheet
- Valid for 12 months from date of delivery
- Response to your inquiry within 24 hours
- We provide support in Chinese, English, French, German, Japanese and Spanish
- Extensive multi-media technical resources to help you
- We investigate all quality concerns to ensure our products perform to the highest standards

If the product does not perform as described on this datasheet, we will offer a refund or replacement. For full details of the Abpromise, please visit <https://www.abcam.cn/abpromise> or contact our technical team.

Terms and conditions

- Guarantee only valid for products bought direct from Abcam or one of our authorized distributors