

Anti-CD103 antibody [EPR4166] ab108503

重组 RabMAb

3 References [2 图像](#)

概述

产品名称	Anti-CD103抗体[EPR4166]
描述	兔单克隆抗体[EPR4166] to CD103
宿主	Rabbit
经测试应用	适用于: WB 不适用于: Flow Cyt, ICC/IF, IHC-P or IP
种属反应性	与反应: Human
免疫原	Synthetic peptide. This information is proprietary to Abcam and/or its suppliers.
阳性对照	HuT-78, Jurkat, 431, HeLa and K562 cell lysates.
常规说明	Clone EPR4166 is different from clone EPR4166(2). This product is a recombinant monoclonal antibody, which offers several advantages including: - High batch-to-batch consistency and reproducibility - Improved sensitivity and specificity - Long-term security of supply - Animal-free production For more information see here . Our RabMAb [®] technology is a patented hybridoma-based technology for making rabbit monoclonal antibodies. For details on our patents, please refer to RabMAb[®] patents . Mouse, Rat: We have preliminary internal testing data to indicate this antibody may not react with these species. Please contact us for more information.

性能

形式	Liquid
存放说明	Shipped at 4°C. Store at -20°C. Stable for 12 months at -20°C.
存储溶液	pH: 7.20 Preservative: 0.05% Sodium azide Constituents: 0.1% BSA, 40% Glycerol (glycerin, glycerine), 9.85% Tris glycine, 50% Tissue culture supernatant
纯度	Protein A purified

克隆单克隆
克隆编号EPR4166
同种型IgG

应用

The Abpromise guarantee **Abpromise™**承诺保证使用ab108503于以下的经测试应用
“应用说明”部分 下显示的仅为推荐的起始稀释度;实际最佳的稀释度/浓度应由使用者检定。

应用	Ab评论	说明
WB		1/1000 - 1/10000. Detects a band of approximately 150 kDa (predicted molecular weight: 130 kDa).

应用说明 Is unsuitable for Flow Cyt, ICC/IF, IHC-P or IP.

靶标

功能 Integrin alpha-E/beta-7 is a receptor for E-cadherin. It mediates adhesion of intra-epithelial T-lymphocytes to epithelial cell monolayers.

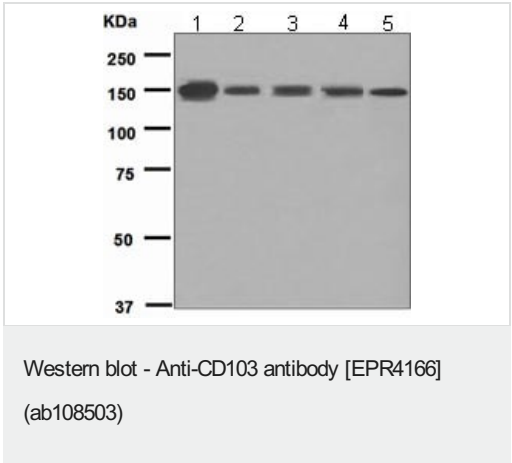
组织特异性 Expressed on a subclass of T-lymphocytes known as intra-epithelial lymphocytes which are located between mucosal epithelial cells.

序列相似性 Belongs to the integrin alpha chain family.
Contains 7 FG-GAP repeats.
Contains 1 VWFA domain.

结构域 The integrin I-domain (insert) is a VWFA domain. Integrins with I-domains do not undergo protease cleavage.

细胞定位 Membrane.

图片



All lanes : Anti-CD103 antibody [EPR4166] (ab108503) at 1/1000 dilution

- Lane 1 :** HuT-78 cell lysate
- Lane 2 :** Jurkat cell lysate
- Lane 3 :** A431 cell lysate
- Lane 4 :** HeLa cell lysate
- Lane 5 :** K562 cell lysate

Lysates/proteins at 10 µg per lane.

Predicted band size: 130 kDa
Observed band size: 150 kDa

Why choose a recombinant antibody?



Research with confidence
Consistent and reproducible results



Long-term and scalable supply
Recombinant technology



Success from the first experiment
Confirmed specificity



Ethical standards compliant
Animal-free production

Anti-CD103 antibody [EPR4166] (ab108503)

Please note: All products are "FOR RESEARCH USE ONLY. NOT FOR USE IN DIAGNOSTIC PROCEDURES"

Our Abpromise to you: Quality guaranteed and expert technical support

- Replacement or refund for products not performing as stated on the datasheet
- Valid for 12 months from date of delivery
- Response to your inquiry within 24 hours
- We provide support in Chinese, English, French, German, Japanese and Spanish
- Extensive multi-media technical resources to help you
- We investigate all quality concerns to ensure our products perform to the highest standards

If the product does not perform as described on this datasheet, we will offer a refund or replacement. For full details of the Abpromise, please visit <https://www.abcam.cn/abpromise> or contact our technical team.

Terms and conditions

- Guarantee only valid for products bought direct from Abcam or one of our authorized distributors