

### Anti-CCR3 antibody ab36827

★★★★★ [2 Abreviews](#) [4 References](#) [3 图像](#)

#### 概述

产品名称	Anti-CCR3抗体
描述	兔多克隆抗体to CCR3
宿主	Rabbit
经测试应用	适用于: WB, IHC-P, ICC/IF
种属反应性	与反应: Human
免疫原	ab36827 was raised against a 14 amino acid peptide from near the carboxy terminus of CCR3 (Human).
阳性对照	IHC-P: Human spleen tissue. ICC/IF: Human spleen cells WB: Human spleen cell lysate.
常规说明	<p>The Life Science industry has been in the grips of a reproducibility crisis for a number of years. Abcam is leading the way in addressing this with our range of recombinant monoclonal antibodies and knockout edited cell lines for gold-standard validation. Please check that this product meets your needs before purchasing.</p> <p>If you have any questions, special requirements or concerns, please send us an inquiry and/or contact our Support team ahead of purchase. Recommended alternatives for this product can be found below, along with publications, customer reviews and Q&amp;As</p>

#### 性能

形式	Liquid
存放说明	Shipped at 4°C. Store at +4°C short term (1-2 weeks). Store at +4°C.
存储溶液	pH: 7.2 Preservative: 0.02% Sodium azide Constituent: PBS
纯度	Ion Exchange Chromatography
克隆	多克隆
同种型	IgG

#### 应用

The Abpromise guarantee

**Abpromise™** 承诺保证使用ab36827于以下的经测试应用

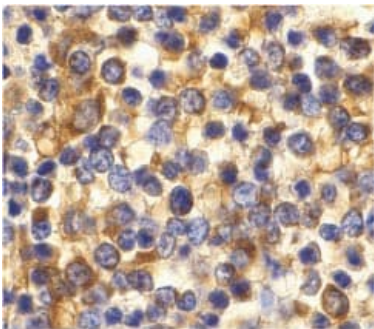
“应用说明”部分 下显示的仅为推荐的起始稀释度;实际最佳的稀释度/浓度应由使用者检定。

应用	Ab评论	说明
WB		Use a concentration of 1 - 2 µg/ml. Detects a band of approximately 55 kDa (predicted molecular weight: 43 kDa).
IHC-P	★★★★★ (2)	Use a concentration of 10 µg/ml.
ICC/IF		Use a concentration of 20 µg/ml.

## 靶标

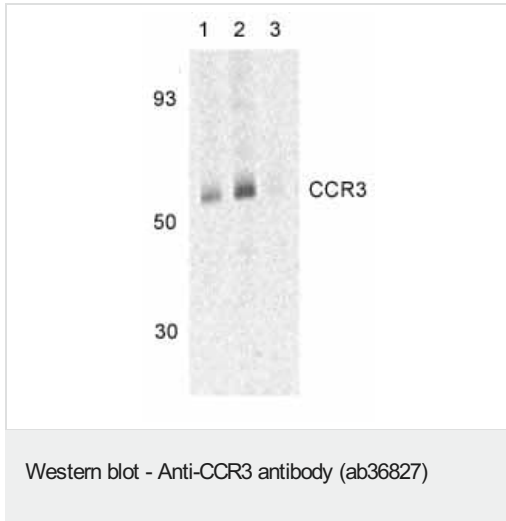
功能	Receptor for a C-C type chemokine. Binds to eotaxin, eotaxin-3, MCP-3, MCP-4, RANTES and MIP-1 delta. Subsequently transduces a signal by increasing the intracellular calcium ions level. Alternative coreceptor with CD4 for HIV-1 infection.
组织特异性	In eosinophils as well as trace amounts in neutrophils and monocytes.
序列相似性	Belongs to the G-protein coupled receptor 1 family.
细胞定位	Cell membrane.

## 图片



ab36827 at 10µg/ml staining CCR3 in human spleen tissue by IHC

Immunohistochemistry (Formalin/PFA-fixed paraffin-embedded sections) - Anti-CCR3 antibody (ab36827)



**Lane 1 :** Anti-CCR3 antibody (ab36827) at 1 µg/ml

**Lanes 2-3 :** Anti-CCR3 antibody (ab36827) at 2 µg/ml

**Lanes 1-2 :** Human spleen tissue lysates

**Lane 3 :** Human spleen tissue lysates with Blocking peptide

**Predicted band size:** 43 kDa

**Observed band size:** 55 kDa

Immunocytochemistry/ Immunofluorescence - Anti-CCR3 antibody (ab36827)

Immunofluorescence of CCR3 in Human Spleen cells using ab36827 at 20 µg/ml.

**Please note:** All products are "FOR RESEARCH USE ONLY. NOT FOR USE IN DIAGNOSTIC PROCEDURES"

### Our Abpromise to you: Quality guaranteed and expert technical support

- Replacement or refund for products not performing as stated on the datasheet
- Valid for 12 months from date of delivery
- Response to your inquiry within 24 hours
- We provide support in Chinese, English, French, German, Japanese and Spanish
- Extensive multi-media technical resources to help you
- We investigate all quality concerns to ensure our products perform to the highest standards

If the product does not perform as described on this datasheet, we will offer a refund or replacement. For full details of the Abpromise, please visit <https://www.abcam.cn/abpromise> or contact our technical team.

### Terms and conditions

- Guarantee only valid for products bought direct from Abcam or one of our authorized distributors