

Anti-CCR3 antibody ab25789

1 图像

概述

产品名称	Anti-CCR3抗体
描述	山羊多克隆抗体to CCR3
宿主	Goat
特异性	This antibody recognizes mouse CCR3 and the peptide sequence is < 50 % identical to other chemokine receptors in this region.
经测试应用	适用于: IHC-P
种属反应性	与反应: Mouse
免疫原	Synthetic peptide: TDEIKTVVESFETTPYEYEWAPP , corresponding to N terminal amino acids 5-29 of Mouse CCR3 Run BLAST with Run BLAST with
阳性对照	Human spleen sections or cytosmears/cytospins of human peripheral blood leukocytes. A549 cell line also has been shown to express CCR3 receptor.
常规说明	<p>The Life Science industry has been in the grips of a reproducibility crisis for a number of years. Abcam is leading the way in addressing this with our range of recombinant monoclonal antibodies and knockout edited cell lines for gold-standard validation. Please check that this product meets your needs before purchasing.</p> <p>If you have any questions, special requirements or concerns, please send us an inquiry and/or contact our Support team ahead of purchase. Recommended alternatives for this product can be found below, along with publications, customer reviews and Q&As</p>

性能

形式	Liquid
存放说明	Shipped at 4°C. Upon delivery aliquot and store at -20°C or -80°C. Avoid repeated freeze / thaw cycles.
存储溶液	pH: 7.20 Preservative: 0.1% Sodium azide Constituents: 0.21% Potassium phosphate, 0.812% Sodium chloride, 0.1% BSA
纯度	Protein G purified
克隆	多克隆

同种型

IgG

应用

The Abpromise guarantee **Abpromise™**承诺保证使用ab25789于以下的经测试应用

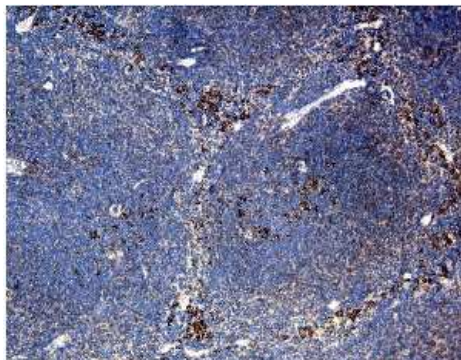
“应用说明”部分下显示的仅为推荐的起始稀释度;实际最佳的稀释度/浓度应由使用者检定。

应用	Ab评论	说明
IHC-P		Use at an assay dependent concentration.

靶标

功能	Receptor for a C-C type chemokine. Binds to eotaxin, eotaxin-3, MCP-3, MCP-4, RANTES and MIP-1 delta. Subsequently transduces a signal by increasing the intracellular calcium ions level. Alternative coreceptor with CD4 for HIV-1 infection.
组织特异性	In eosinophils as well as trace amounts in neutrophils and monocytes.
序列相似性	Belongs to the G-protein coupled receptor 1 family.
细胞定位	Cell membrane.

图片



Immunohistochemistry of CCR3 (ab25789) antibody to mouse CCR3 on paraffin section of mouse spleen.

Immunohistochemistry (Formalin/PFA-fixed paraffin-embedded sections) - Anti-CCR3 antibody (ab25789)

Please note: All products are "FOR RESEARCH USE ONLY. NOT FOR USE IN DIAGNOSTIC PROCEDURES"

Our Abpromise to you: Quality guaranteed and expert technical support

- Replacement or refund for products not performing as stated on the datasheet
- Valid for 12 months from date of delivery
- Response to your inquiry within 24 hours

- We provide support in Chinese, English, French, German, Japanese and Spanish
- Extensive multi-media technical resources to help you
- We investigate all quality concerns to ensure our products perform to the highest standards

If the product does not perform as described on this datasheet, we will offer a refund or replacement. For full details of the Abpromise, please visit <https://www.abcam.cn/abpromise> or contact our technical team.

Terms and conditions

- Guarantee only valid for products bought direct from Abcam or one of our authorized distributors