


Anti-CCR11 antibody [E100] ab32564

RabMAb

1 References 1 图像

概述

产品名称	Anti-CCR11抗体[E100]
描述	兔单克隆抗体[E100] to CCR11
宿主	Rabbit
特异性	The antibody recognises CKRB/CKR11. It does not cross-react with other G-protein coupled receptor 1 family members.
经测试应用	适用于: WB 不适用于: Flow Cyt or IHC
种属反应性	与反应: Human 预测可用于: Mouse, Rat 
免疫原	Synthetic peptide. This information is proprietary to Abcam and/or its suppliers.
阳性对照	K562 cell lysate.
常规说明	<p>Our RabMAb[®] technology is a patented hybridoma-based technology for making rabbit monoclonal antibodies. For details on our patents, please refer to RabMAb[®] patents.</p> <p>The Life Science industry has been in the grips of a reproducibility crisis for a number of years. Abcam is leading the way in addressing this with our range of recombinant monoclonal antibodies and knockout edited cell lines for gold-standard validation. Please check that this product meets your needs before purchasing.</p> <p>If you have any questions, special requirements or concerns, please send us an inquiry and/or contact our Support team ahead of purchase. Recommended alternatives for this product can be found below, along with publications, customer reviews and Q&As</p>

性能

形式	Liquid
存放说明	Shipped at 4°C. Upon delivery aliquot and store at -20°C. Avoid freeze / thaw cycles.
存储溶液	pH: 7.20 Preservative: 0.01% Sodium azide Constituents: 49% PBS, 50% Glycerol (glycerin, glycerine), 0.05% BSA
纯度	Whole Cell Lysate

克隆	单克隆
克隆编号	E100
同种型	IgG

应用

The Abpromise guarantee **Abpromise™**承诺保证使用ab32564于以下的经测试应用

“应用说明”部分 下显示的仅为推荐的起始稀释度;实际最佳的稀释度/浓度应由使用者检定。

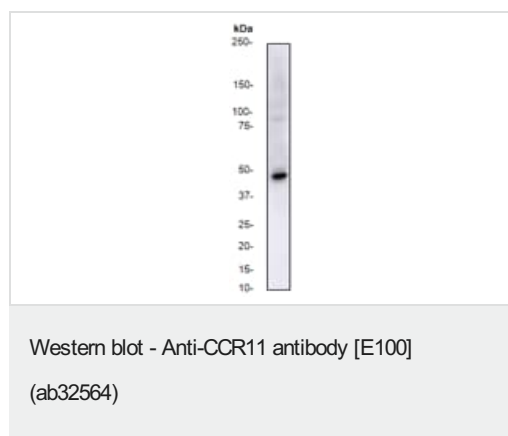
应用	Ab评论	说明
WB		1/5000 - 1/10000. Detects a band of approximately 45 kDa (predicted molecular weight: 40 kDa).

应用说明 Is unsuitable for Flow Cyt or IHC.

靶标

功能	Receptor for CCL2, CCL8, CCL13, CCL19, CCL21 and CCL25.
组织特异性	Predominantly expressed in heart. Lower expression in lung, pancreas, spleen, colon, skeletal muscle and small intestine.
序列相似性	Belongs to the G-protein coupled receptor 1 family.
细胞定位	Cell membrane.

图片



Anti-CCR11 antibody [E100] (ab32564) at 1/10000 dilution + K562 cell lysate

Predicted band size: 40 kDa

Observed band size: 45 kDa

Please note: All products are "FOR RESEARCH USE ONLY. NOT FOR USE IN DIAGNOSTIC PROCEDURES"

Our Abpromise to you: Quality guaranteed and expert technical support

- Replacement or refund for products not performing as stated on the datasheet
- Valid for 12 months from date of delivery

- Response to your inquiry within 24 hours
- We provide support in Chinese, English, French, German, Japanese and Spanish
- Extensive multi-media technical resources to help you
- We investigate all quality concerns to ensure our products perform to the highest standards

If the product does not perform as described on this datasheet, we will offer a refund or replacement. For full details of the Abpromise, please visit <https://www.abcam.cn/abpromise> or contact our technical team.

Terms and conditions

- Guarantee only valid for products bought direct from Abcam or one of our authorized distributors