

Anti-CCNB1IP1 antibody [2114C2a] ab84850

1 图像

概述

产品名称	Anti-CCNB1IP1抗体[2114C2a]
描述	小鼠单克隆抗体[2114C2a] to CCNB1IP1
宿主	Mouse
经测试应用	适用于: WB
种属反应性	与反应: Recombinant fragment 预测可用于: Human 
免疫原	Recombinant fragment corresponding to a region within human CCNB1IP1
阳性对照	immunising recombinant protein
常规说明	<p>The Life Science industry has been in the grips of a reproducibility crisis for a number of years. Abcam is leading the way in addressing this with our range of recombinant monoclonal antibodies and knockout edited cell lines for gold-standard validation. Please check that this product meets your needs before purchasing.</p> <p>If you have any questions, special requirements or concerns, please send us an inquiry and/or contact our Support team ahead of purchase. Recommended alternatives for this product can be found below, along with publications, customer reviews and Q&As</p>

性能

形式	Liquid
存放说明	Shipped at 4°C. Upon delivery aliquot and store at -20°C or -80°C. Avoid repeated freeze / thaw cycles.
存储溶液	pH: 7.40 Preservative: 0.05% Sodium azide Constituents: 1% BSA, PBS
纯度	Protein G purified
纯化说明	purified from culture supernatant of hybridoma cultured in a medium containing bovine IgG-depleted (approximately 95%) fetal bovine serum. Filtered through a 0.22 µm membrane.
克隆	单克隆
克隆编号	2114C2a
同种型	IgG1

应用

The Abpromise guarantee

Abpromise™ 承诺保证使用ab84850于以下的经测试应用

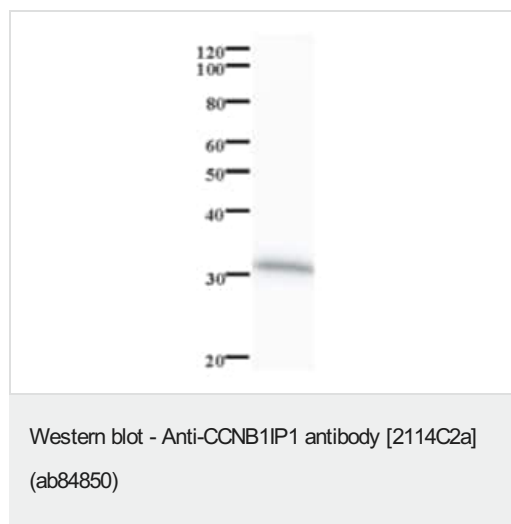
“应用说明”部分 下显示的仅为推荐的起始稀释度;实际最佳的稀释度/浓度应由使用者检定。

应用	Ab评论	说明
WB		Use at an assay dependent concentration. Predicted molecular weight: 32 kDa.

靶标

功能	E3 ubiquitin-protein ligase. Modulates cyclin B levels and participates in the regulation of cell cycle progression through the G2 phase. Overexpression causes delayed entry into mitosis.
组织特异性	Highly expressed in heart. Detected at intermediate levels in liver and kidney, and at low levels in placenta, brain and lung.
通路	Protein modification; protein ubiquitination.
序列相似性	Contains 1 RING-type zinc finger.
翻译后修饰	Ubiquitinated; autoubiquitinated. Phosphorylated by CDK1 on serine or threonine residues (in vitro).
细胞定位	Nucleus. Chromosome. May associate with segregating chromosomes during metaphase and anaphase.

图片



Anti-CCNB1IP1 antibody [2114C2a] (ab84850) + immunogen
(Human recombinant fragment)

Predicted band size: 32 kDa

Please note: All products are "FOR RESEARCH USE ONLY. NOT FOR USE IN DIAGNOSTIC PROCEDURES"

Our Abpromise to you: Quality guaranteed and expert technical support

- Replacement or refund for products not performing as stated on the datasheet
- Valid for 12 months from date of delivery
- Response to your inquiry within 24 hours
- We provide support in Chinese, English, French, German, Japanese and Spanish
- Extensive multi-media technical resources to help you
- We investigate all quality concerns to ensure our products perform to the highest standards

If the product does not perform as described on this datasheet, we will offer a refund or replacement. For full details of the Abpromise, please visit <https://www.abcam.cn/abpromise> or contact our technical team.

Terms and conditions

- Guarantee only valid for products bought direct from Abcam or one of our authorized distributors