

Anti-CCDC51 antibody ab121329

5 图像

概述	
产品名称	Anti-CCDC51抗体
描述	兔多克隆抗体to CCDC51
宿主	Rabbit
经测试应用	适用于: WB, ICC/IF, IHC-P
种属反应性	与反应: Mouse, Rat, Human
免疫原	antigen, corresponding to amino acids 91-219 of Human CCDC51 (Q96ER9).
阳性对照	Human Stomach tissue; RT-4 and U-251 MG cell lysate; Liver and Tonsil tissue lysate; Human U-2 OS cells.
常规说明	<p>The Life Science industry has been in the grips of a reproducibility crisis for a number of years. Abcam is leading the way in addressing this with our range of recombinant monoclonal antibodies and knockout edited cell lines for gold-standard validation. Please check that this product meets your needs before purchasing.</p> <p>If you have any questions, special requirements or concerns, please send us an inquiry and/or contact our Support team ahead of purchase. Recommended alternatives for this product can be found below, along with publications, customer reviews and Q&amp;As</p>
性能	
形式	Liquid
存放说明	Shipped at 4°C. Upon delivery aliquot and store at -20°C. Avoid repeated freeze / thaw cycles.
存储溶液	pH: 7.20 Preservative: 0.02% Sodium azide Constituents: 59% PBS, 40% Glycerol (glycerin, glycerine)
纯度	Immunogen affinity purified
克隆	多克隆
同种型	IgG
应用	

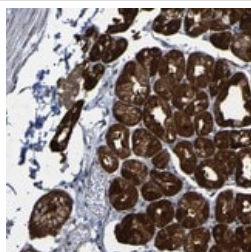
“应用说明”部分 下显示的仅为推荐的起始稀释度;实际最佳的稀释度/浓度应由使用者检定。

应用	Ab评论	说明
WB		Use a concentration of 0.04 - 0.4 µg/ml.
ICC/IF		Use a concentration of 0.25 - 2 µg/ml.
IHC-P		1/50 - 1/200. Perform heat mediated antigen retrieval with citrate buffer pH 6 before commencing with IHC staining protocol.

## 靶标

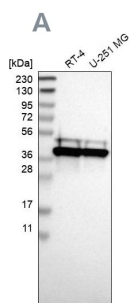
细胞定位 Membrane.

## 图片



Immunohistochemistry (Formalin/PFA-fixed paraffin-embedded sections) - Anti-CCDC51 antibody (ab121329)

ab121329, at 1/100, staining CCDC51 in paraffin embedded Human stomach tissue by Immunohistochemistry.



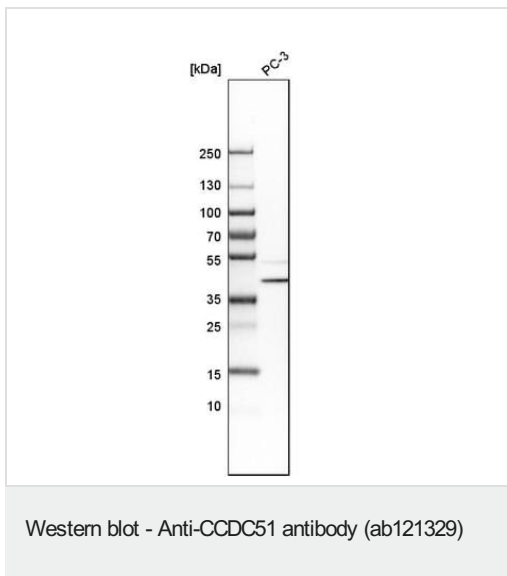
Western blot - Anti-CCDC51 antibody (ab121329)

**All lanes :** Anti-CCDC51 antibody (ab121329)

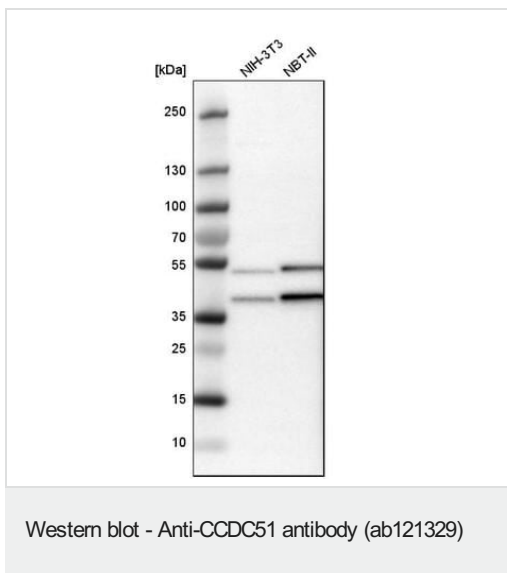
**Lane 1 :** RT-4 cell lysate

**Lane 2 :** U-251 cell lysate

Lysates/proteins at 0.4 µg/ml per lane.



Anti-CCDC51 antibody (ab121329) + PC-3 cell lysate at 0.4 µg/ml



**All lanes :** Anti-CCDC51 antibody (ab121329)

**Lane 1 :** NIH-3T3 cell lysate

**Lane 2 :** NBT-II cell lysate

Lysates/proteins at 0.4 µg/ml per lane.



ab121329, at 4 µg/ml, staining CCDC51 (green) in PFA-fixed, Triton-permeabilized Human U-2 OS cells by Immunofluorescence.

**Please note:** All products are "FOR RESEARCH USE ONLY. NOT FOR USE IN DIAGNOSTIC PROCEDURES"

**Our Abpromise to you: Quality guaranteed and expert technical support**

- 
- Replacement or refund for products not performing as stated on the datasheet
  - Valid for 12 months from date of delivery
  - Response to your inquiry within 24 hours
  
  - We provide support in Chinese, English, French, German, Japanese and Spanish
  - Extensive multi-media technical resources to help you
  - We investigate all quality concerns to ensure our products perform to the highest standards

If the product does not perform as described on this datasheet, we will offer a refund or replacement. For full details of the Abpromise, please visit <https://www.abcam.cn/abpromise> or contact our technical team.

#### **Terms and conditions**

---

- Guarantee only valid for products bought direct from Abcam or one of our authorized distributors