

Anti-CCDC47 antibody ab91585

3 图像

概述

| | |
|-------|---|
| 产品名称 | Anti-CCDC47抗体 |
| 描述 | 兔多克隆抗体to CCDC47 |
| 宿主 | Rabbit |
| 特异性 | ab91585 is specific for isoform a of CCDC47 and will not recognize other isoforms. |
| 经测试应用 | 适用于: ICC/IF, WB, IHC-P |
| 种属反应性 | 与反应: Mouse |
| 免疫原 | A 15 amino acid synthetic peptide from near the carboxy terminus of Human CCDC47 (EAW94279). |
| 常规说明 | <p>The Life Science industry has been in the grips of a reproducibility crisis for a number of years. Abcam is leading the way in addressing this with our range of recombinant monoclonal antibodies and knockout edited cell lines for gold-standard validation. Please check that this product meets your needs before purchasing.</p> <p>If you have any questions, special requirements or concerns, please send us an inquiry and/or contact our Support team ahead of purchase. Recommended alternatives for this product can be found below, along with publications, customer reviews and Q&As</p> |

性能

| | |
|------|---|
| 形式 | Liquid |
| 存放说明 | Shipped at 4°C. Store at +4°C. |
| 存储溶液 | pH: 7.2 Preservative: 0.02% Sodium azide Constituent: PBS |
| 纯度 | Immunogen affinity purified |
| 克隆 | 多克隆 |
| 同种型 | IgG |

应用

The Abpromise guarantee

Abpromise™ 承诺保证使用ab91585于以下的经测试应用

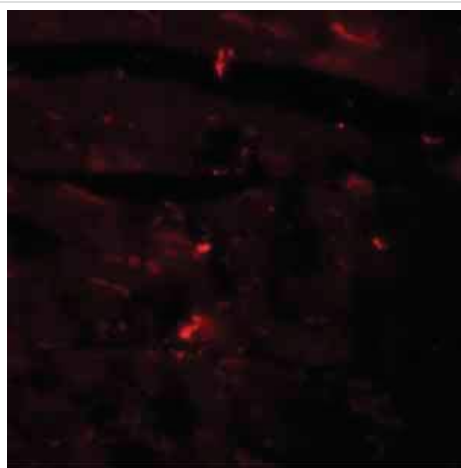
“应用说明”部分 下显示的仅为推荐的起始稀释度;实际最佳的稀释度/浓度应由使用者检定。

| 应用 | Ab评论 | 说明 |
|--------|------|---|
| ICC/IF | | Use a concentration of 20 µg/ml. |
| WB | | Use a concentration of 1 - 2 µg/ml. Predicted molecular weight: 56 kDa. |
| IHC-P | | Use at an assay dependent concentration. |

靶标

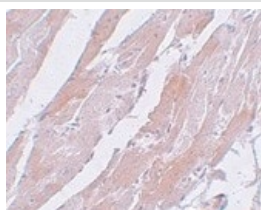
细胞定位 Membrane.

图片



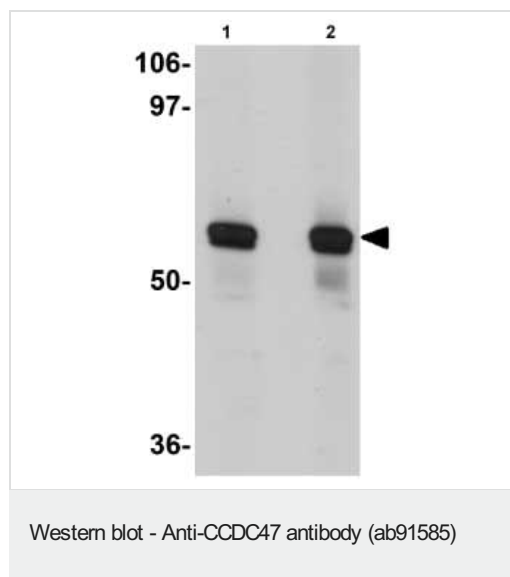
Immunofluorescence of CDCC47 in mouse heart tissue with ab91585 at 20 ug/mL.

Immunocytochemistry/ Immunofluorescence - Anti-CCDC47 antibody (ab91585)



Immunohistochemistry of mouse heart tissue with ab91585 at 5 µg/mL.

Immunohistochemistry (Formalin/PFA-fixed paraffin-embedded sections) - Anti-CCDC47 antibody (ab91585)



Lane 1 : Anti-CCDC47 antibody (ab91585) at 1 µg/ml

Lane 2 : Anti-CCDC47 antibody (ab91585) at 2 µg/ml

All lanes : Mouse heart tissue

lysate

Lysates/proteins at 15 µg per lane.

Predicted band size: 56 kDa

Please note: All products are "FOR RESEARCH USE ONLY. NOT FOR USE IN DIAGNOSTIC PROCEDURES"

Our Abpromise to you: Quality guaranteed and expert technical support

- Replacement or refund for products not performing as stated on the datasheet
- Valid for 12 months from date of delivery
- Response to your inquiry within 24 hours
- We provide support in Chinese, English, French, German, Japanese and Spanish
- Extensive multi-media technical resources to help you
- We investigate all quality concerns to ensure our products perform to the highest standards

If the product does not perform as described on this datasheet, we will offer a refund or replacement. For full details of the Abpromise, please visit <https://www.abcam.cn/abpromise> or contact our technical team.

Terms and conditions

- Guarantee only valid for products bought direct from Abcam or one of our authorized distributors